



## HPV Vaccine Quality Improvement Study Quarterly Data & Feedback Report

<b>Practice ID:</b>	8		
<b>Baseline Period:</b>	Jan-Dec 2017	<b>Date of Data Pull:</b>	2/25/2020
<b>MOC Project Periods:</b>	Jan-Dec 2018	<b>Data through:</b>	2019 Week 52

This Data and Feedback Report complements the weekly run chart data reports you receive from VHealth.

In this report, we present your data in the form of control charts, which allow us to apply some statistical rules to determine whether or not movements in the data over time represent real shifts in the outcome measures rather than just random variation.

We have included a written summary interpreting each measure for you -- what we see, what it could mean, and recommended actions for your consideration.

## Data Summary & Feedback

Report Period: October - December 2019

1st MOC Project Change Options: B - Patient Education Materials and D - Reminders - Follow Up Doses

2nd MOC Project Change Options: G - Vaccines in Non-Well Visits and I - Standing Orders for 1st Dose

Summary Measure #1: 1+ Dose (Initiation) Among entire active patient population		
What we see	What it could mean	Recommended actions
<p>Baseline and all quarter rates for ages 13-17 are below TN and US. <i>Note: both the TN and US rates for 2018 are higher than the 2017 rates.</i></p> <p>For ages 11-17, there is a 13.4 percentage point increase from baseline to end of Y2Q4. For ages 13-17, an increase of 15.8 percentage points.</p>	<p>Although your rates are below TN and US, your practice is making good progress with initiating the vaccine.</p> <p>There is strong progress in dose initiation percentages. Your efforts are having a positive impact.</p>	<p>Continue to include data review as a standing agenda item in meetings. As necessary, remind providers and staff of the adopted workflows to continue your improvement trend.</p> <p>Continue to monitor over time to hold your gains and continue to improve.</p>
Summary Measure #2: All Doses (Complete) Among entire active patient population		
What we see	What it could mean	Recommended actions
<p>Baseline and all quarter rates for ages 13-17 are below TN and US. <i>Note: both the TN and US rates for 2018 are higher than the 2017 rates.</i></p> <p>For ages 11-17, there is a 6.7 percentage point increase from baseline to end of Y2Q4. For ages 13-17, an increase of 7.2 percentage points.</p>	<p>Your practice is making some progress in completion rates.</p> <p>There is some progress in completion rates, but greater increases are needed for a significant improvement.</p>	<p>Revisit your adopted workflow for 2nd/3rd dose reminders. Are the steps being carried out consistently? Revisit adopted workflows for the other changes as a reminder for entire practice. Continue to monitor over time to hold your gains and continue to improve.</p>
Weekly Measure #1: HPV Dose Due (Well)		
<i>WELL visits with patients up-to-date for HPV vaccine (% of visits with HPV due, ages 11-17)</i>		
What we see	What it could mean	Recommended actions
<p>Baseline mean (average): 45% of patients who were due received an HPV vaccine dose during well visits. The mean increased to 62%, dropped to 43%, and increased to 55% in July. It remains at 55% through December 2019.</p>	<p>The improvement from implementing standing orders for the first dose of HPV and integrating patient education materials dropped off during the winter months, increasing again in June/July.</p>	<p>Review the data with providers. Review workflow for standing orders and address any obstacles that may exist.</p>
Weekly Measure #2: HPV Dose Due (Non-Well)		
<i>NON-WELL visits with patients up-to-date for HPV vaccine (% of visits with HPV due, ages 11-17)</i>		
What we see	What it could mean	Recommended actions
<p>Baseline mean (average) is 2%. The mean increased to 3% in August and remained the same through December 2019.</p>	<p>Implementation of offering the HPV vaccine during non-well visits is not having an impact.</p>	<p>Continue to offer the vaccine during non-well visits. Discuss the current workflow and identify obstacles. Review workflow and modify to minimize or eliminate obstacles.</p>

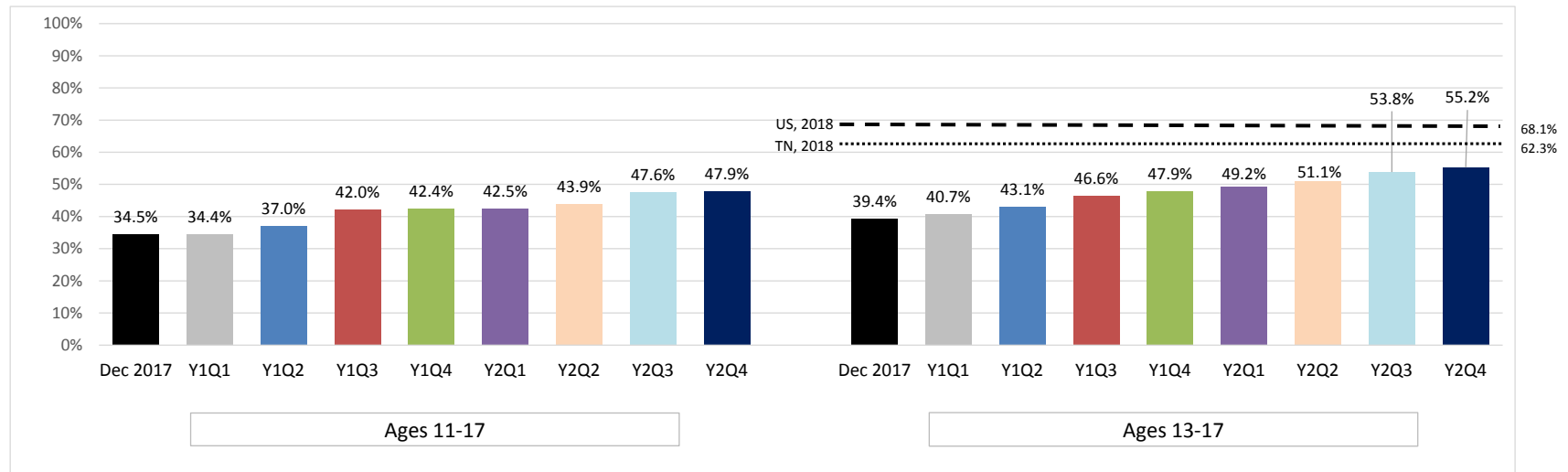
## Data Summary & Feedback

Report Period: October - December 2019

Weekly Measure #3: HPV Dose Due (All)		
<i>ALL visits with patients up-to-date for HPV vaccine (% of visits with HPV due, ages 11-17)</i>		
What we see	What it could mean	Recommended actions
Baseline mean (average) of 9% increased to 23% in May 2018, dropped to 15%, then 6%, 13% in April and 19% in July 2019 and dropped to 8% in Sept and remained at 8% through December 2019.	This measure is a combination of Weekly Measures #1 and #2. The increase during the summer months is a common seasonal pattern.	Continue to offer the vaccine during non-well visits. Discuss the current workflow and identify any obstacles; modify workflow to minimize or eliminate obstacles.
Weekly Measure #4: HPV Recommend-Well		
<i>WELL visits with documented provider recommendation (given or refused) (% of visits with HPV due, ages 11-17)</i>		
What we see	What it could mean	Recommended actions
This measure shows provider recommendation in well visits, counted as vaccines given plus vaccines refused (if documented). The pattern and data are almost identical to Measure #1.	Providers are not documenting refusals during well visits using the codes provided or, if documenting, we may need to adjust how VHealth pulls your documented refusals.	Discuss with your team where and how they are documenting refusals for well visits. Review "dummy refusal codes." If needed, submit a technical assistance ticket to VHealth to determine if they are capturing documented refusals.
Weekly Measure #5: HPV Recommend-All		
<i>ALL visits with documented provider recommendation (given or refused) (% of visits with HPV due, ages 11-17)</i>		
What we see	What it could mean	Recommended actions
This measure shows provider recommendation in ALL visits, counted as vaccines given plus vaccines refused (if documented). The data are almost identical to Measure #3.	Providers are not documenting refusals during non-well visits using the codes provided or, if documenting, we may need to adjust how VHealth pulls your documented refusals.	Discuss with your team where and how they are documenting refusals for non-well visits. Review "dummy refusal codes." If needed, submit a technical assistance ticket to VHealth to determine if they are capturing documented refusals.
Weekly Measure #6: Bundle Adol Vax		
<i>Visits for ages 11-12 year-olds in which HPV &amp; meningococcal vaccines are bundled with Tdap, when due (% of visits, ages 11-12)</i>		
What we see	What it could mean	Recommended actions
The mean (average) is 65%. There has not been a sustained change from the baseline period. However, many months are above the mean.	Although several months are above the mean, implementation of vaccine communication strategies and patient education materials has not had a sustained effect on improving bundling adolescent vaccines.	Discuss obstacles to bundling for all 11-12 year old visits and identify ways to minimize or eliminate them. Review vaccine communication strategies and use of patient education materials, including hesitant parent materials.

### Summary Measure: 1+ Dose (Initiation)

Note: US and TN data were updated for 2018

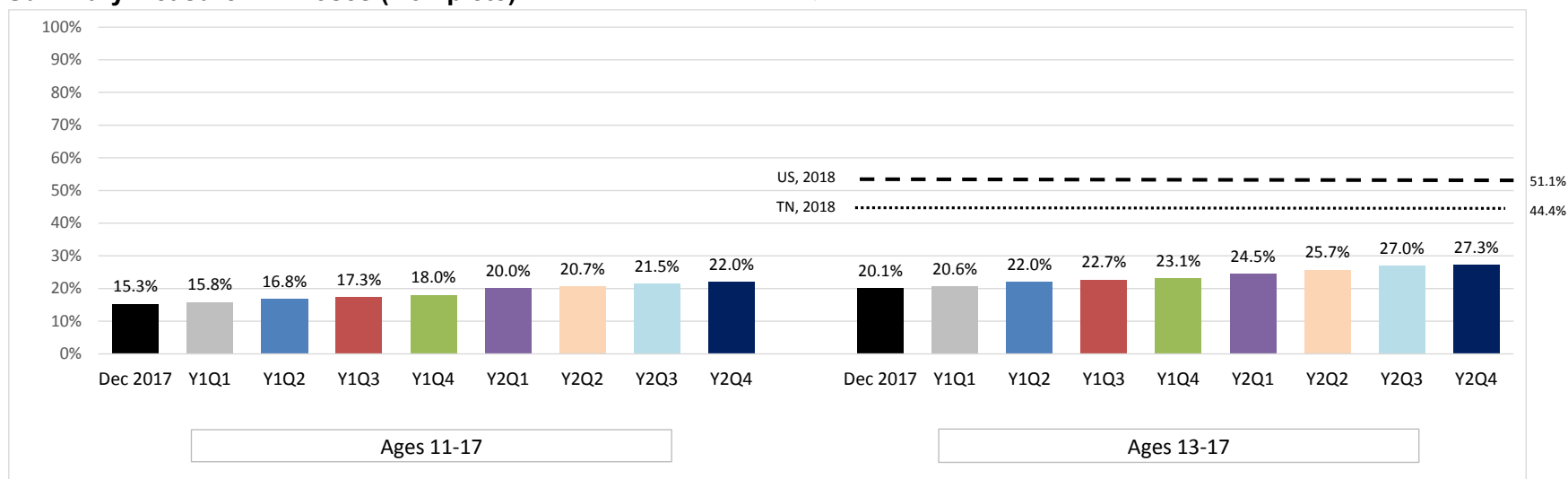


Notes: Rates are for males and females combined.  
Practice rates calculated on all active patients (at least one visit in past three years), ages 11-17 or ages 13-17, as indicated.

	Baseline			First MOC Project						Second MOC Project						Maintenance Period													
	Dec 2017			Y1Q1			Y1Q2			Y1Q3			Y1Q4			Y2Q1			Y2Q2			Y2Q3			Y2Q4				
	#	Total	%	#	Total	%	#	Total	%	#	Total	%	#	Total	%	#	Total	%	#	Total	%	#	Total	%	#	Total	%	#	Total
<b>Ages 11-17</b>	1192	3459	34%	1196	3473	34%	1296	3502	37%	1472	3501	42%	1466	3458	42%	1453	3418	43%	1503	3425	44%	1617	3398	48%	1599	3337	48%		
<b>Ages 13-17</b>	960	2438	39%	992	2437	41%	1054	2446	43%	1136	2440	47%	1156	2415	48%	1188	2414	49%	1235	2419	51%	1304	2422	54%	1315	2381	55%		

## Summary Measure: All Doses (Complete)

Note: US and TN data were updated for 2018

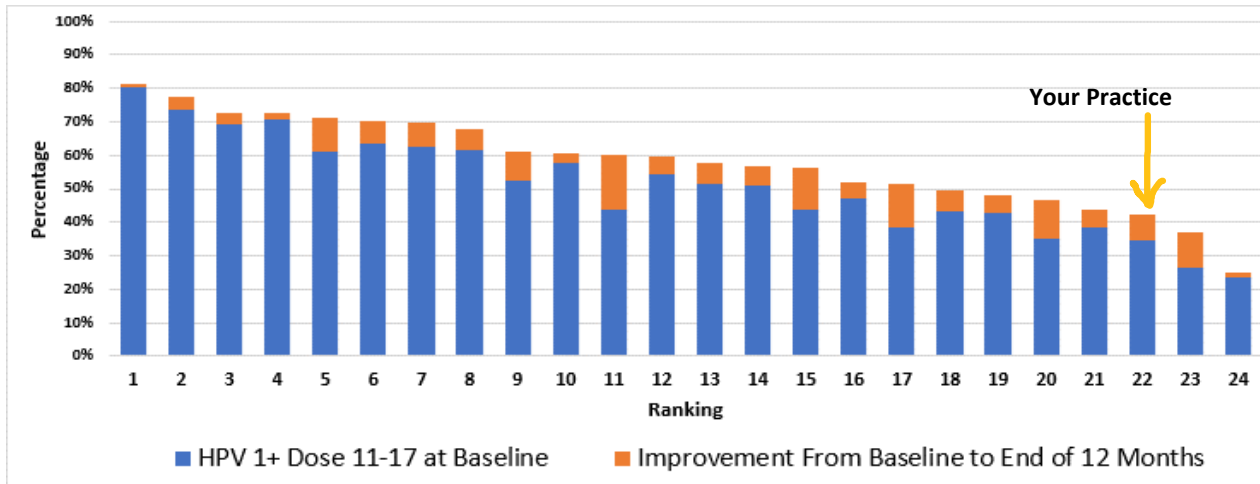


Notes: Rates are for males and females combined.

Practice rates calculated on all active patients (at least one visit in past three years), ages 11-17 or ages 13-17, as indicated.

	Baseline			First MOC Project						Second MOC Project						Maintenance Period											
	Dec 2017			Y1Q1			Y1Q2			Y1Q3			Y1Q4			Y2Q1			Y2Q2			Y2Q3			Y2Q4		
	#	Total	%	#	Total	%	#	Total	%	#	Total	%	#	Total	%	#	Total	%	#	Total	%	#	Total	%	#	Total	%
<b>Ages 11-17</b>	530	3459	15%	550	3473	16%	588	3502	17%	606	3501	17%	622	3458	18%	685	3418	20%	708	3425	21%	731	3398	22%	735	3337	22%
<b>Ages 13-17</b>	490	2438	20%	503	2437	21%	539	2446	22%	554	2440	23%	558	2415	23%	591	2414	24%	622	2419	26%	654	2422	27%	649	2381	27%

**Measure:** HPV 1+ Dose 11-17 yo  
**Description:** Ranking of HPV vaccine initiation of all active patients ages 11-17 (%) among study sites



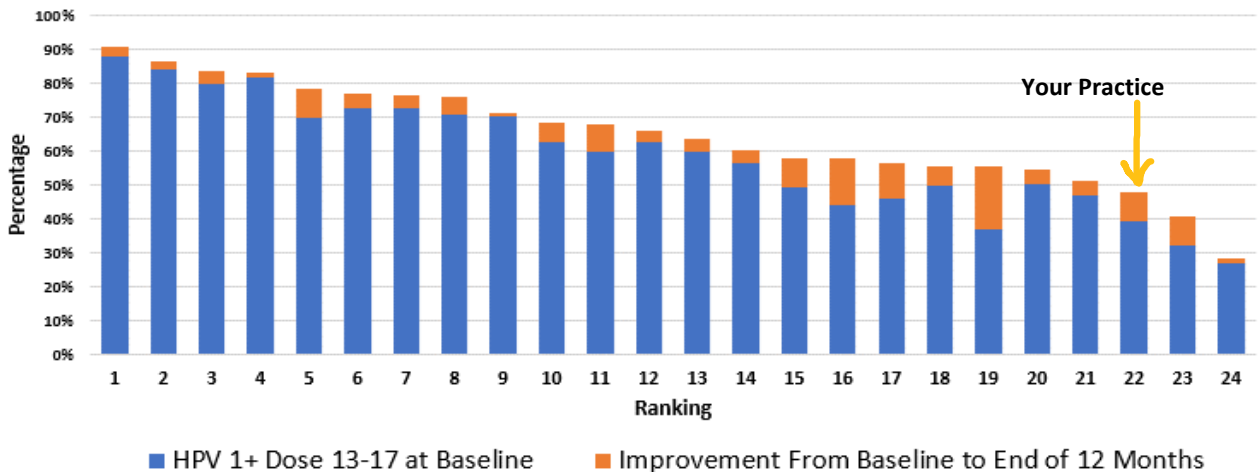
Your practice ranked **22nd in initiating** the HPV vaccine series among patients ages 11-17.

**Baseline:** 34.5% (Dec 2018).

**End of 12 months:** 42.4% (Dec 2019).

**Improvement:** 7.9 percentage point increase in 12 months.

**Measure:** HPV 1+ Dose 13-17 yo  
**Description:** Ranking of HPV vaccine initiation of all active patients ages 13-17 (%) among study sites



Your practice ranked **22nd in initiating** the HPV vaccine series among patients ages 13-17.

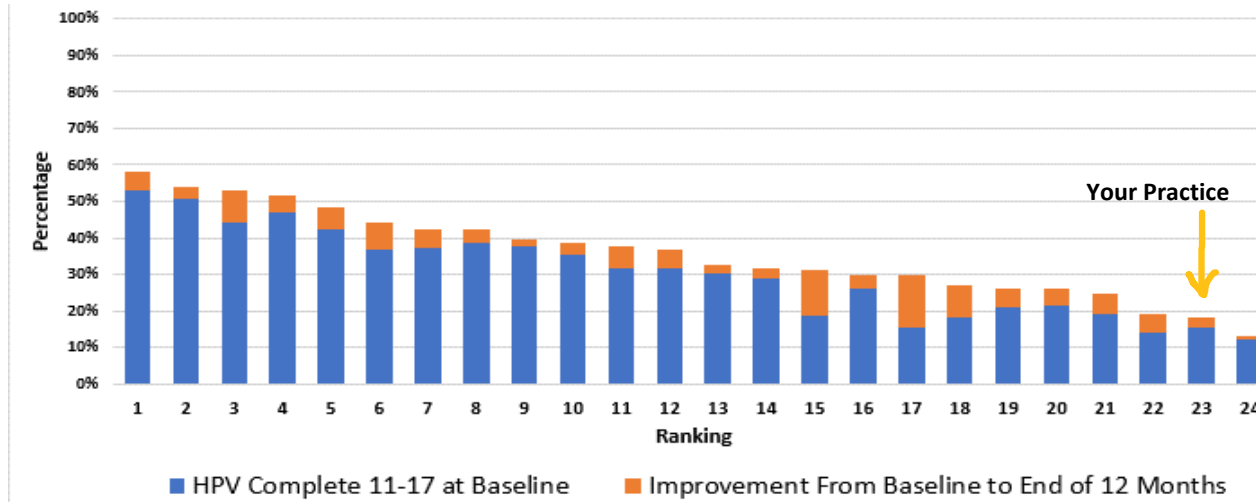
**Baseline:** 39.4% (Dec 2018).

**End of 12 months:** 47.9% (Dec 2019).

**Improvement:** 8.5 percentage point increase in 12 months.

**Measure:** HPV Complete 11-17 yo

**Description:** Ranking of HPV vaccine completion of all active patients ages 11-17 (%) among study sites



Your practice ranked **23rd** in **completing** the HPV vaccine series among patients ages 11-17.

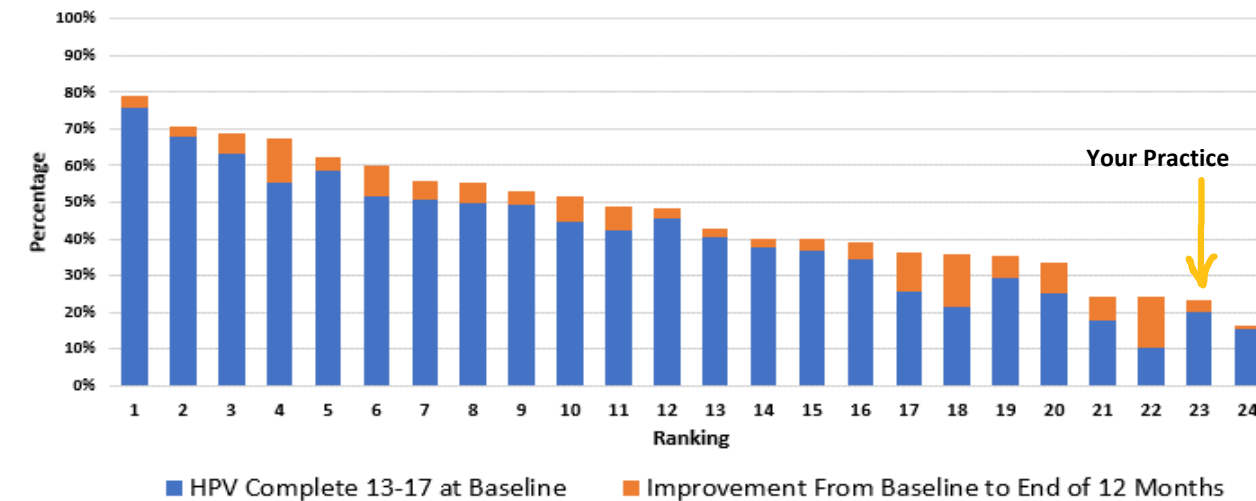
**Baseline:** 15.3% (Dec 2018).

**End of 12 months:** 18.0% (Dec 2019).

**Improvement:** 2.7 percentage point increase in 12 months.

**Measure:** HPV Complete 13-17 yo

**Description:** Ranking of HPV vaccine completion of all active patients ages 13-17 (%) among study sites



Your practice ranked **23rd** in **completing** the HPV vaccine series among patients ages 13-17.

**Baseline:** 20.1% (Dec 2018).

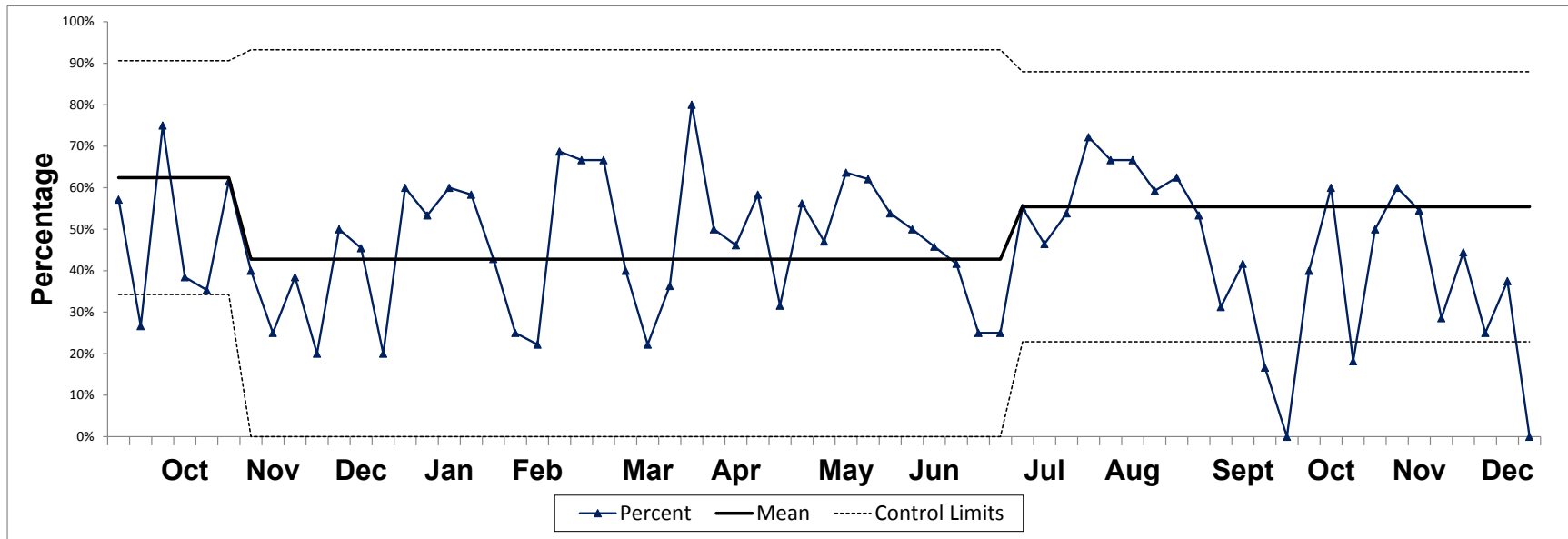
**End of 12 months:** 23.1% (Dec 2019).

**Improvement:** 3.0 percentage point increase in 12 months.

Weekly Measure #: 1

Name: HPV Dose Due (Well)

Description: WELL visits with patients up-to-date for HPV vaccine (% of visits with HPV due, ages 11-17)

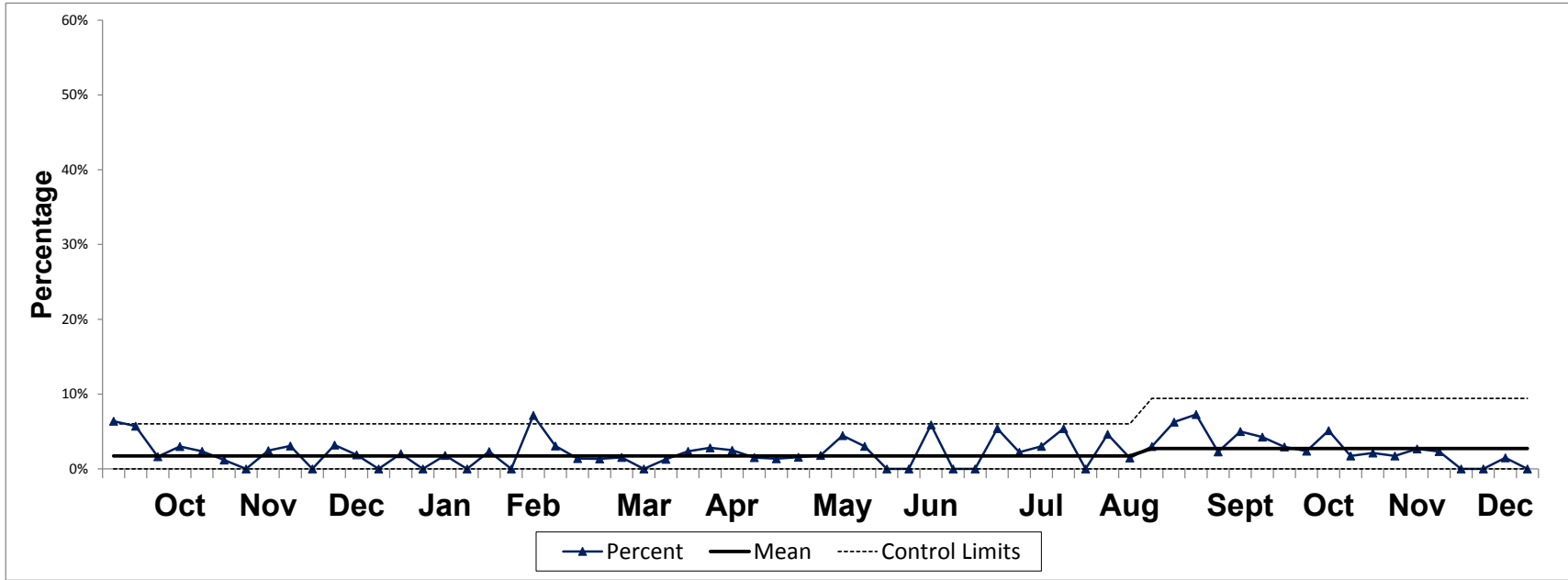


	Jan	Feb	Mar	Apr	May	Jun	Jul	Aug	Sept	Oct	Nov	Dec
<b>2017</b>	1	5	9	13	17	21	25	29	33	37	41	45
<b>2018</b>	3	7	11	15	19	23	27	31	35	39	43	47
<b>2019</b>	5	9	13	17	21	25	29	33	37	41	45	49

	Jul	Aug	Sep	Oct	Nov	Dec
<b>2017</b>	27	31	35	39	43	47
<b>2018</b>	29	33	37	41	45	49
<b>2019</b>	31	35	39	43	47	51



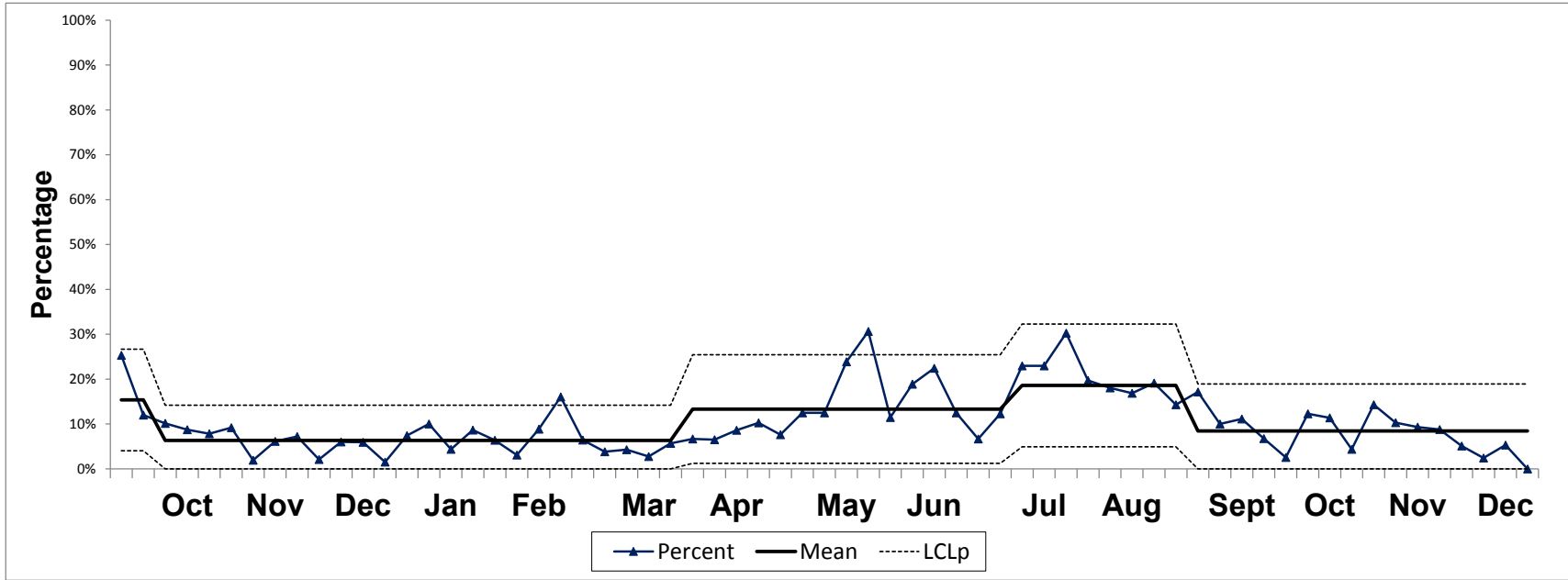
**Weekly Measure #:** 2  
**Name:** HPV Dose (Non-Well)  
**Description:** NON-WELL clinic visits with patients up-to-date for HPV vaccine (% of visits with HPV due, ages 11-17)



	Jan				Feb				Mar					Apr				May					Jun				
<b>2017</b>	1	2	3	4	5	6	7	8	9	10	11	12	13	14	15	16	17	18	19	20	21	22	23	24	25	26	
<b>Complete</b>	1	6	2	1	4	1	5	1	3	1	1	1	0	3	1	1	2	1	1	3	1	1	0	1	1	2	
<b>Total</b>	55	107	95	132	153	185	133	104	102	127	103	87	100	106	87	84	85	86	93	91	52	33	43	53	46	51	
<b>Percent</b>	2%	6%	2%	1%	3%	1%	4%	1%	3%	1%	1%	1%	0%	3%	1%	1%	2%	1%	3%	2%	3%	0%	2%	2%	2%	4%	
<b>2018</b>	1	1	2	3	1	0	1	1	1	1	2	0	2	1	1	2	1	0	2	0	2	0	1	1	0	2	
<b>Total</b>	55	96	37	101	138	215	226	115	117	90	96	95	58	68	96	89	84	71	93	48	51	26	48	45	34	40	
<b>Percent</b>	2%	1%	5%	3%	1%	0%	0%	1%	1%	1%	2%	0%	3%	1%	1%	2%	1%	0%	2%	0%	4%	0%	2%	2%	0%	5%	
<b>2019</b>	1	0	2	0	2	0	5	2	1	1	1	0	1	2	2	2	1	1	1	1	2	1	0	0	2	0	
<b>Total</b>	49	65	110	69	86	85	70	65	72	75	65	63	77	85	71	80	66	73	64	55	45	33	48	33	34	28	
<b>Percent</b>	2%	0%	2%	0%	2%	0%	7%	3%	1%	1%	2%	0%	1%	2%	3%	3%	2%	1%	2%	2%	4%	3%	0%	0%	6%	0%	

	Jul				Aug				Sep					Oct				Nov					Dec				
<b>2017</b>	27	28	29	30	31	32	33	34	35	36	37	38	39	40	41	42	43	44	45	46	47	48	49	50	51	52	
<b>Complete</b>	0	0	0	2	1	0	5	1	2	0	2	0	3	2	2	1	2	1	1	1	0	2	1	1	0	0	
<b>Total</b>	27	45	42	50	59	63	107	99	94	50	79	102	86	65	36	67	104	93	94	118	84	109	94	77	58	37	
<b>Percent</b>	0%	0%	0%	4%	2%	0%	5%	1%	2%	0%	3%	0%	3%	6%	1%	2%	1%	1%	1%	0%	2%	1%	1%	0%	0%		
<b>2018</b>	1	0	6	1	2	1	2	5	0	0	2	3	1	3	2	1	2	2	1	0	1	3	0	3	2	0	
<b>Total</b>	27	49	49	45	40	67	89	79	81	48	67	75	53	47	35	61	67	85	85	98	41	98	85	94	107	61	
<b>Percent</b>	4%	0%	12%	2%	5%	1%	2%	6%	0%	0%	3%	4%	2%	6%	6%	2%	3%	2%	1%	0%	2%	3%	0%	3%	2%	0%	
<b>2019</b>	0	2	1	1	2	0	3	1	2	3	4	1	3	2	1	1	2	1	1	1	2	1	0	1	0	0	
<b>Total</b>	33	37	45	33	37	48	65	68	67	48	55	44	60	47	34	42	39	58	47	58	75	43	69	75	67	27	
<b>Percent</b>	0%	5%	2%	3%	5%	0%	5%	1%	3%	6%	7%	2%	5%	4%	3%	2%	5%	2%	2%	2%	3%	2%	0%	0%	1%	0%	

**Weekly Measure #:** 3  
**Name:** HPV Dose Due (All)  
**Description:** ALL visits with patients up-to-date for HPV vaccine (% of visits with HPV due, ages 11-17)



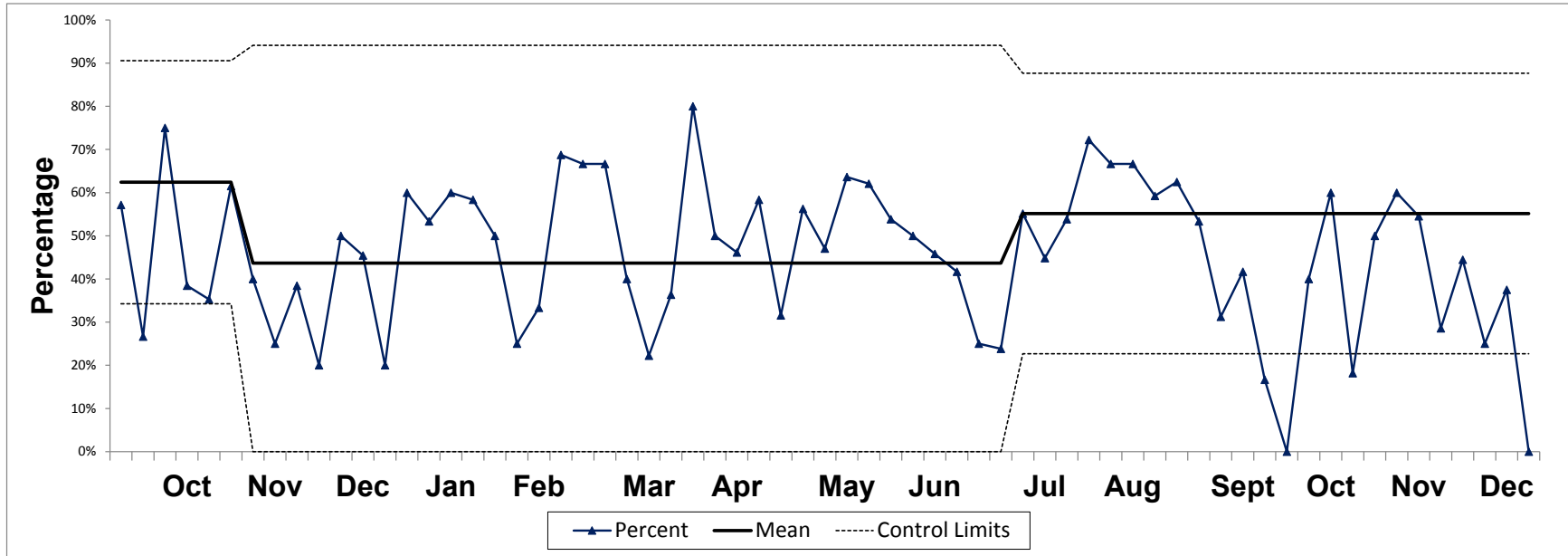
	Jan				Feb				Mar					Apr				May					Jun				
<b>2017</b>	1	2	3	4	5	6	7	8	9	10	11	12	13	14	15	16	17	18	19	20	21	22	23	24	25	26	
<b>Complete</b>	1	13	7	2	10	4	5	4	4	3	3	10	6	6	4	1	6	4	6	8	9	7	10	6	14	16	
<b>Total</b>	57	116	102	137	163	202	138	110	110	130	112	103	114	114	97	88	93	93	108	107	75	44	69	71	77	72	
<b>Percent</b>	2%	11%	7%	1%	6%	2%	4%	4%	4%	2%	3%	10%	5%	5%	4%	1%	6%	4%	6%	7%	12%	16%	14%	8%	18%	22%	
<b>2018</b>	2	4	5	7	9	8	7	9	3	4	6	3	7	5	7	7	5	4	10	14	21	10	17	19	13	25	
<b>Complete</b>	2	4	5	7	9	8	7	9	3	4	6	3	7	5	7	7	5	4	10	14	21	10	17	19	13	25	
<b>Total</b>	58	101	45	112	154	230	243	139	133	101	102	100	68	78	105	99	92	81	105	73	86	46	75	82	55	65	
<b>Percent</b>	3%	4%	11%	6%	6%	3%	3%	6%	2%	4%	6%	3%	10%	6%	7%	7%	5%	5%	10%	19%	24%	22%	23%	23%	24%	38%	
<b>2019</b>	4	8	5	7	6	3	7	13	5	3	3	2	5	6	5	8	8	7	10	9	16	19	7	10	13	5	
<b>Complete</b>	4	8	5	7	6	3	7	13	5	3	3	2	5	6	5	8	8	7	10	9	16	19	7	10	13	5	
<b>Total</b>	54	80	115	81	94	97	79	81	78	78	70	72	88	90	77	93	78	92	80	72	67	62	61	53	58	40	
<b>Percent</b>	7%	10%	4%	9%	6%	3%	9%	16%	6%	4%	4%	3%	6%	7%	6%	9%	10%	8%	13%	13%	24%	31%	11%	19%	22%	13%	

	Jul				Aug				Sep					Oct				Nov					Dec				
<b>2017</b>	27	28	29	30	31	32	33	34	35	36	37	38	39	40	41	42	43	44	45	46	47	48	49	50	51	52	
<b>Complete</b>	4	15	24	20	23	15	19	14	8	4	15	6	7	9	8	6	16	10	7	6	2	6	8	5	11	1	
<b>Total</b>	41	75	92	94	101	100	132	120	111	61	102	117	100	80	57	75	123	113	104	129	90	116	105	85	81	41	
<b>Percent</b>	10%	20%	26%	21%	23%	15%	14%	12%	7%	7%	15%	5%	7%	11%	14%	8%	13%	9%	7%	5%	2%	5%	8%	6%	14%	2%	
<b>2018</b>	21	17	41	30	22	17	16	19	14	10	13	15	8	19	6	7	7	8	9	2	3	8	2	6	7	1	
<b>Complete</b>	21	17	41	30	22	17	16	19	14	10	13	15	8	19	6	7	7	8	9	2	3	8	2	6	7	1	
<b>Total</b>	51	80	90	94	74	103	114	99	99	70	86	95	63	75	50	69	80	102	98	103	49	111	95	100	118	66	
<b>Percent</b>	41%	21%	46%	32%	30%	17%	14%	19%	14%	14%	15%	16%	13%	25%	12%	10%	9%	8%	9%	2%	6%	7%	2%	6%	6%	2%	
<b>2019</b>	3	7	17	14	23	13	15	15	18	8	12	6	8	4	1	7	5	3	9	7	8	5	4	2	4	0	
<b>Complete</b>	3	7	17	14	23	13	15	15	18	8	12	6	8	4	1	7	5	3	9	7	8	5	4	2	4	0	
<b>Total</b>	45	57	74	61	76	66	83	89	94	56	70	60	72	59	39	57	44	69	63	68	86	57	78	83	75	28	
<b>Percent</b>	7%	12%	23%	23%	30%	20%	18%	17%	19%	14%	17%	10%	11%	7%	3%	12%	11%	4%	14%	10%	9%	9%	5%	2%	5%	0%	

Weekly Measure #: 4

Name: HPV Recommend-Well

Description: WELL visits with documented provider recommendation (given or refused) (% of visits with HPV due, ages 11-17)



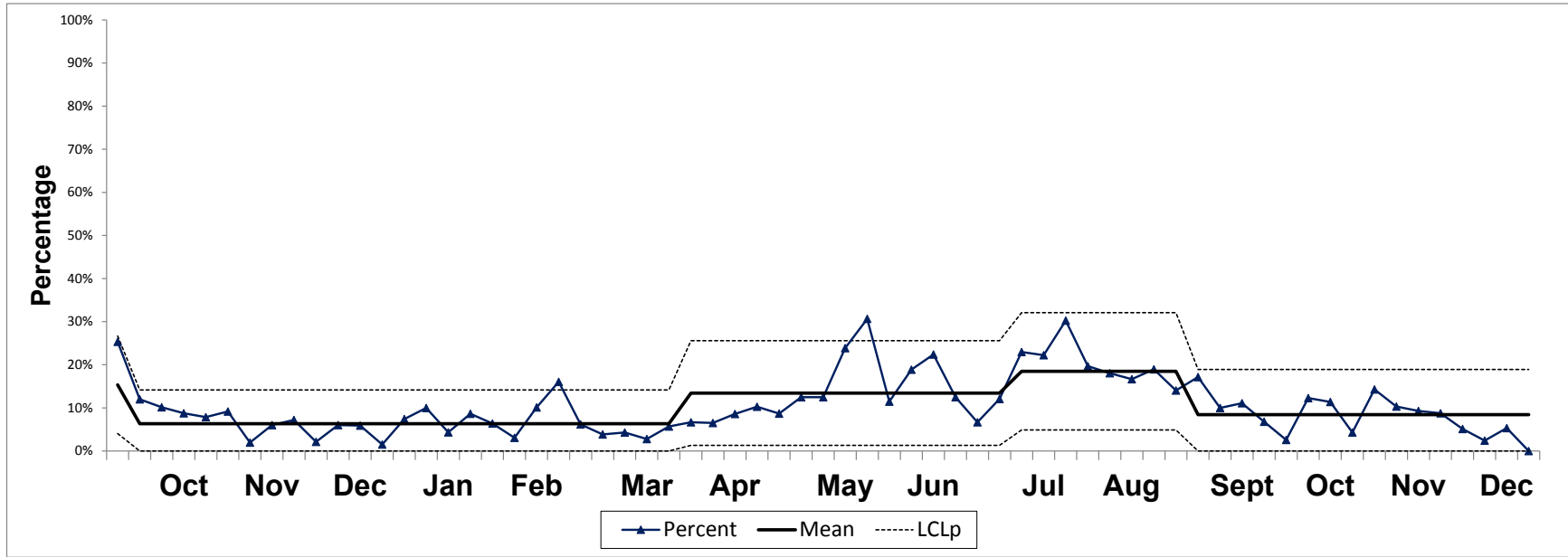
	Week	Jan		Feb				Mar				Apr				May				Jun							
		1	2	3	4	5	6	7	8	9	10	11	12	13	14	15	16	17	18	19	20	21	22	23	24	25	26
2017	Complete	0	7	5	1	6	3	0	3	1	2	2	9	6	3	3	0	4	3	5	5	8	6	10	5	13	14
	Total	2	9	7	5	10	17	5	6	8	3	9	16	14	8	10	4	8	7	15	16	23	11	26	18	31	21
	Percent	0%	78%	71%	20%	60%	18%	0%	50%	13%	67%	22%	56%	43%	38%	30%	0%	50%	43%	33%	31%	35%	55%	38%	28%	42%	67%
2018	Complete	1	3	3	4	8	8	6	8	2	3	4	4	5	4	6	5	4	4	8	14	19	10	16	18	13	23
	Total	3	5	8	11	16	15	17	24	16	11	6	5	10	10	9	10	8	10	12	25	35	20	27	37	21	25
	Percent	33%	60%	38%	36%	50%	53%	35%	33%	13%	27%	67%	80%	50%	40%	67%	50%	50%	40%	67%	56%	54%	50%	59%	49%	62%	92%
2019	Complete	3	8	3	7	4	3	3	11	4	2	2	2	4	4	3	6	7	6	9	8	14	18	7	10	11	5
	Total	5	15	5	12	8	12	9	16	6	3	5	9	11	5	6	13	12	19	16	17	22	29	13	20	24	12
	Percent	60%	53%	60%	58%	50%	25%	33%	69%	67%	67%	40%	22%	36%	80%	50%	46%	58%	32%	56%	47%	64%	62%	54%	50%	46%	42%

	Week	Jul				Aug				Sep				Oct				Nov				Dec					
		27	28	29	30	31	32	33	34	35	36	37	38	39	40	41	42	43	44	45	46	47	48	49	50	51	52
2017	Complete	4	15	24	18	22	15	14	13	6	4	13	6	4	7	6	5	14	9	6	5	2	4	7	4	11	1
	Total	14	30	50	44	42	37	25	21	17	12	23	15	14	15	21	8	19	20	10	11	6	7	11	8	23	4
	Percent	29%	50%	48%	41%	52%	41%	56%	62%	35%	33%	57%	40%	29%	47%	29%	63%	74%	45%	60%	45%	33%	57%	64%	50%	48%	25%
2018	Complete	20	17	35	29	20	16	14	14	14	10	11	12	7	16	4	6	5	6	8	2	2	5	2	3	5	1
	Total	24	31	41	49	34	36	25	20	18	22	19	20	10	28	15	8	13	17	13	5	8	13	10	6	11	5
	Percent	83%	55%	85%	59%	59%	44%	56%	70%	78%	45%	58%	60%	70%	57%	27%	75%	38%	35%	62%	40%	25%	38%	20%	50%	45%	20%
2019	Complete	3	5	16	13	21	13	12	14	16	5	8	5	5	2	0	6	3	2	8	6	6	4	4	2	3	0
	Total	12	21	29	29	39	18	18	21	27	8	15	16	12	12	5	15	5	11	16	10	11	14	9	8	8	1
	Percent	25%	24%	55%	45%	54%	72%	67%	67%	59%	63%	53%	31%	42%	17%	0%	40%	60%	18%	50%	60%	55%	29%	44%	25%	38%	0%

Weekly Measure #: 5

Name: HPV Recommend-All

Description: ALL visits with documented provider recommendation (given or refused) (% of visits with HPV due, ages 11-17)



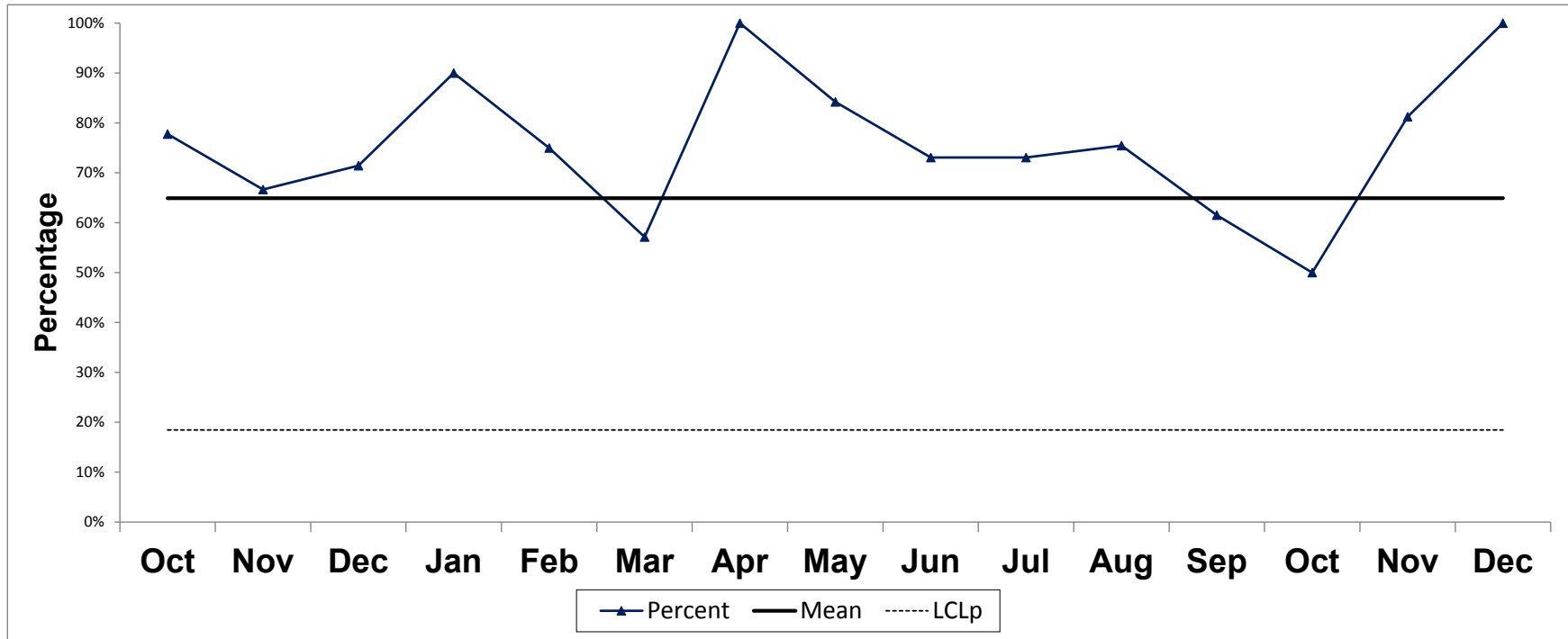
	Week	Jan		Feb				Mar				Apr				May				Jun							
		1	2	3	4	5	6	7	8	9	10	11	12	13	14	15	16	17	18	19	20	21	22	23	24	25	26
2017	Complete	1	13	7	2	10	4	5	4	4	3	3	10	6	6	4	1	6	4	6	8	8	7	10	6	14	16
	Total	57	116	102	137	163	202	138	111	110	130	112	103	114	114	97	88	93	94	107	107	74	44	69	71	77	72
	Percent	2%	11%	7%	1%	6%	2%	4%	4%	4%	2%	3%	10%	5%	5%	4%	1%	6%	4%	6%	7%	11%	16%	14%	8%	18%	22%
2018	Complete	2	4	5	7	9	8	7	9	3	4	6	4	7	5	7	7	5	4	11	14	21	10	17	19	13	26
	Total	58	101	45	112	154	231	243	140	134	101	102	100	68	78	105	99	92	82	105	73	86	46	75	82	55	65
	Percent	3%	4%	11%	6%	6%	3%	3%	6%	2%	4%	6%	4%	10%	6%	7%	7%	5%	5%	10%	19%	24%	22%	23%	23%	24%	40%
2019	Complete	4	8	5	7	6	3	8	13	5	3	3	2	5	6	5	8	8	8	10	9	16	19	7	10	13	5
	Total	54	80	115	81	94	98	79	81	81	78	70	72	88	90	77	93	78	92	80	72	67	62	61	53	58	40
	Percent	7%	10%	4%	9%	6%	3%	10%	16%	6%	4%	4%	3%	6%	7%	6%	9%	10%	9%	13%	13%	24%	31%	11%	19%	22%	13%

	Week	Jul				Aug				Sep				Oct				Nov				Dec					
		27	28	29	30	31	32	33	34	35	36	37	38	39	40	41	42	43	44	45	46	47	48	49	50	51	52
2017	Complete	4	15	24	20	23	15	19	14	8	4	15	6	7	9	8	6	16	10	7	6	2	6	8	5	11	1
	Total	41	75	92	94	101	101	132	120	111	62	102	118	100	80	57	75	123	113	104	130	90	116	105	85	81	41
	Percent	10%	20%	26%	21%	23%	15%	14%	12%	7%	6%	15%	5%	7%	11%	14%	8%	13%	9%	7%	5%	2%	5%	8%	6%	14%	2%
2018	Complete	21	17	41	30	22	17	16	19	14	10	13	15	8	19	6	7	7	8	9	2	3	8	2	6	7	1
	Total	51	80	91	94	74	103	114	99	99	70	86	95	63	75	50	69	80	102	98	103	50	111	95	100	119	66
	Percent	41%	21%	45%	32%	30%	17%	14%	19%	14%	14%	15%	16%	13%	25%	12%	10%	9%	8%	9%	2%	6%	7%	2%	6%	6%	2%
2019	Complete	3	7	17	14	23	13	15	15	18	8	12	6	8	4	1	7	5	3	9	7	8	5	4	2	4	0
	Total	45	58	74	63	76	66	83	90	95	57	70	60	72	59	39	57	44	70	63	68	86	57	78	83	75	28
	Percent	7%	12%	23%	22%	30%	20%	18%	17%	19%	14%	17%	10%	11%	7%	3%	12%	11%	4%	14%	10%	9%	9%	5%	2%	5%	0%

**Weekly Measure #:** 6

**Name:** Bundle Adol Vax

**Description:** Visits for ages 11-12 year-olds in which HPV & meningococcal vaccines are bundled with Tdap, when due (% of visits, ages 11-12)



		Jan	Feb	Mar	Apr	May	Jun	Jul	Aug	Sep	Oct	Nov	Dec
2017	Complete	2	5	4	2	5	14	4	8	8	10	5	7
	Total	3	7	7	2	8	17	17	13	9	13	8	10
	Percent	67%	71%	57%	100%	63%	82%	24%	62%	89%	77%	63%	70%
2018	Complete	4	6	3	4	12	22	23	9	8	7	6	5
	Total	5	9	5	10	17	24	26	14	10	9	9	7
	Percent	80%	67%	60%	40%	71%	92%	88%	64%	80%	78%	67%	71%
2019	Complete	9	6	4	13	32	19	19	40	8	4	13	4
	Total	10	8	7	13	38	26	26	53	13	8	16	4
	Percent	90%	75%	57%	100%	84%	73%	73%	75%	62%	50%	81%	100%