



HPV Vaccine Quality Improvement Study Quarterly Data & Feedback Report

Practice ID:	4		
Baseline Period:	Feb 2017-Jan 2018	Date of Data Pull:	2/24/2020
MOC Project Periods:	Feb 2018-Jan 2019	Data through:	2020 Week 4

This Data and Feedback Report complements the weekly run chart data reports you receive from VHealth.

In this report, we present your data in the form of control charts, which allow us to apply some statistical rules to determine whether or not movements in the data over time represent real shifts in the outcome measures, rather than just random variation.

We have included a written summary interpreting each measure for you -- what we see, what it could mean, and recommended actions for your consideration.

Data Summary & Feedback

Report Period: Nov 2019 - Jan 2020

1st MOC Project Change Options: A - Bundle Adolescent Vaccines, B - Patient Education Materials

2nd MOC Project Change Options: F - Reminders: Due/Overdue for Well Visits, G - Vaccines in Non-Well Visits

Summary Measure #1: 1+ Dose (Initiation) Among entire active patient population		
What we see	What it could mean	Recommended actions
Quarters Y1Q3 through Y2Q4 for ages 13-17 are higher than TN, but lower than the US rate. Y2Q3 and Q4 are above both the US and TN rates. <i>Note: Both TN and US rates for 2018 are higher than the 2017 rates.</i>	Your practice has made progress on initiating the vaccine.	Continue to include data review as a standing agenda item in meetings. As necessary, remind providers and staff of the adopted workflows to continue your improvement trend.
For ages 11-17, there is a 9.4 percentage point increase from baseline to end of Y2Q4. For ages 13-17, an increase of 11.2 percentage points.	Your practice is making progress, with small gains most quarters.	Continue to monitor over time to hold your gains and continue to improve.
Summary Measure #2: All Doses (Complete) Among entire active patient population		
What we see	What it could mean	Recommended actions
The Y2Q2, Q3, and Q4 rates for ages 13-17 are higher than TN, but all quarters are lower than the US rate. <i>Note: both the TN and US rates for 2018 are higher than the 2017 rates.</i>	Your practice is making some progress in completion rates, but larger increases are needed to be a significant improvement.	Revisit your adopted workflows for patient education and offering the vaccine in non-well visits. Are the steps being carried out consistently? Revisit adopted workflows for the other changes as a reminder for entire practice.
For ages 11-17, there is a 5 percentage point increase from baseline to end of Y2Q4. For ages 13-17, an increase of 7.7 percentage points.	There is some progress in completion rates, but substantial increases are needed for it to be a significant improvement.	Continue to monitor over time to hold your gains and continue to improve.
Weekly Measure #1: HPV Dose Due (Well)		
<i>WELL visits with patients up-to-date for HPV vaccine (% of visits with HPV due, ages 11-17)</i>		
What we see	What it could mean	Recommended actions
Baseline mean (average) started at 43% in 2017, increased to 57% and in Jan 2019 increased to 66% and remains at 66% through Jan 2020. This measure is the percentage of patients who were due and received an HPV vaccine dose during well visits.	Integrating patient education materials and the reminders for due/overdue well visits appears to have resulted in a sustained <u>improvement</u> after some initial fluctuations.	Review use of patient education materials and workflows for reminders to parents to determine if any adjustments are needed. Review use of materials for hesitant parents.
Weekly Measure #2: HPV Dose Due (Non-Well)		
<i>NON-WELL visits with patients up-to-date for HPV vaccine (% of visits with HPV due, ages 11-17)</i>		
What we see	What it could mean	Recommended actions

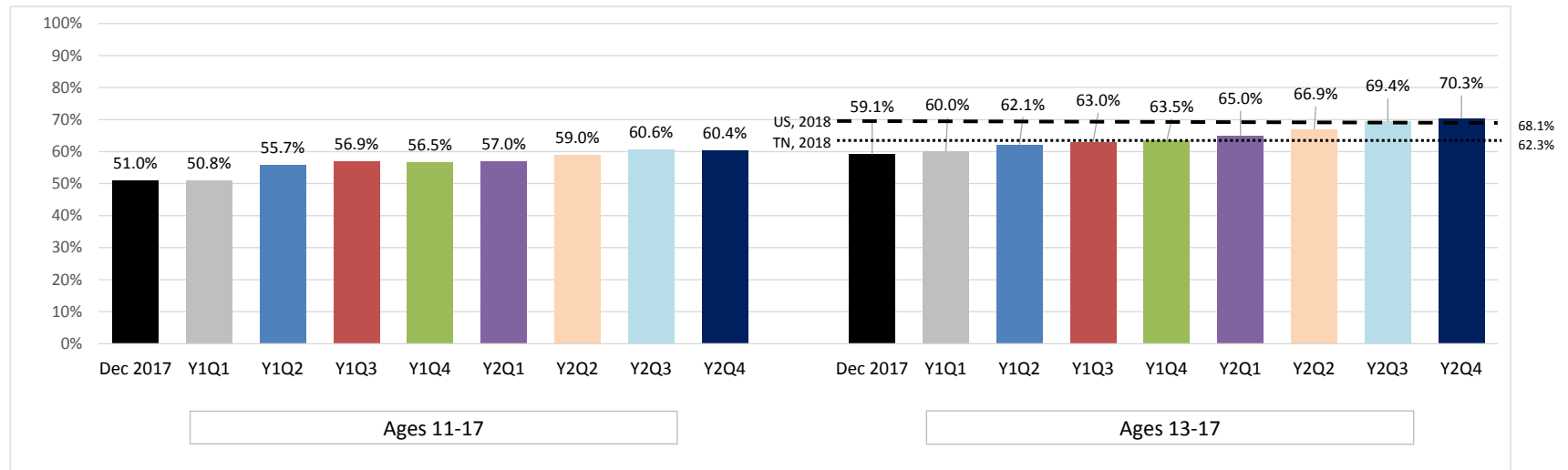
Data Summary & Feedback

Report Period: Nov 2019 - Jan 2020

Baseline mean (average) was 3% and dropped to less than 1% in October 2018 and remains there through Jan 2020.	Your implementation of offering the HPV vaccine during non-well visits has not had a positive effect.	Review your PDSA plan for offering the vaccine in non-well visits. Identify obstacles for providers and adjust your workflows to address the obstacles. Implement the new PDSA cycle.
Weekly Measure #3: HPV Dose Due (All)		
<i>ALL visits with patients up-to-date for HPV vaccine (% of visits with HPV due, ages 11-17)</i>		
What we see	What it could mean	Recommended actions
The mean of 39% has fluctuated during the year from 24% to 19% to 44% during the summer, to 27%.	Increases during the summer months is a common seasonal pattern.	Review your PDSA plan for offering the vaccine in non-well visits. Identify obstacles for providers and adjust your workflows to address the obstacles. Implement the new PDSA cycle.
Weekly Measure #4: HPV Recommend-Well		
<i>WELL visits with documented provider recommendation (given or refused) (% of visits with HPV due, ages 11-17)</i>		
What we see	What it could mean	Recommended actions
This measure shows provider recommendation in well visits, counted as vaccines given plus vaccines refused (if documented). The mean remains at 76% through Y2Q4.	The difference between this measure and measure #1 shows documented patient refusal of HPV vaccine in around 10% of well visits.	Consider reviewing patients who did not receive the vaccine and don't have a documented refusal to identify if the vaccine was offered or refused.
Weekly Measure #5: HPV Recommend-All		
<i>ALL visits with documented provider recommendation (given or refused) (% of visits with HPV due, ages 11-17)</i>		
What we see	What it could mean	Recommended actions
This measure shows provider recommendation in ALL visits, counted as vaccines given plus vaccines refused (if documented). The mean has fluctuated since baseline, and is at 32% from August through January 2020.	The difference between this measure and measure #3 shows documented patient refusal of HPV vaccine in around 5% of all visits.	Consider reviewing patients who did not receive the vaccine and don't have a documented refusal to identify if the vaccine was offered or refused.
Weekly Measure #6: Bundle Adol Vax		
<i>Visits for ages 11-12 year-olds in which HPV & meningococcal vaccines are bundled with Tdap, when due (% of visits, ages 11-12)</i>		
What we see	What it could mean	Recommended actions
The mean (average) remains at 84% through January 2020.	Implementation of vaccine communication strategies and patient education materials has resulted in a sustained <u>improvement</u> in bundled adolescent vaccines.	Discuss obstacles to bundling for all 11-12 year old visits and identify ways to minimize or eliminate them. Continue to monitor over time to sustain your improvements.

Summary Measure: 1+ Dose (Initiation)

Note: US and TN data were updated for 2018

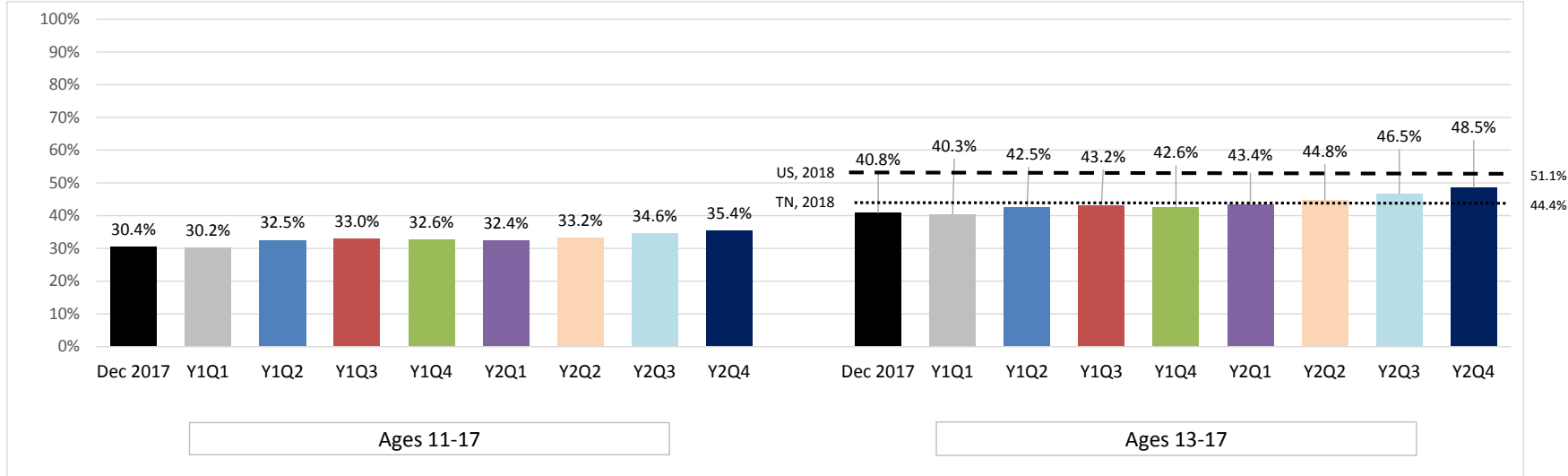


Notes: Rates are for males and females combined.
Practice rates calculated on all active patients (at least one visit in past three years), ages 11-17 or ages 13-17, as indicated.

	Baseline			First MOC Project						Second MOC Project						Maintenance Period													
	Dec 2017			Y1Q1			Y1Q2			Y1Q3			Y1Q4			Y2Q1			Y2Q2			Y2Q3			Y2Q4				
	#	Total	%	#	Total	%	#	Total	%	#	Total	%	#	Total	%	#	Total	%	#	Total	%	#	Total	%	#	Total	%	#	Total
Ages 11-17	1094	2145	51%	1109	2181	51%	1229	2206	56%	1268	2229	57%	1273	2252	57%	1278	2243	57%	1337	2268	59%	1362	2248	61%	1368	2266	60%		
Ages 13-17	845	1429	59%	884	1473	60%	935	1505	62%	963	1528	63%	989	1558	63%	996	1532	65%	1027	1535	67%	1045	1506	69%	1063	1512	70%		

Summary Measure: All Doses (Complete)

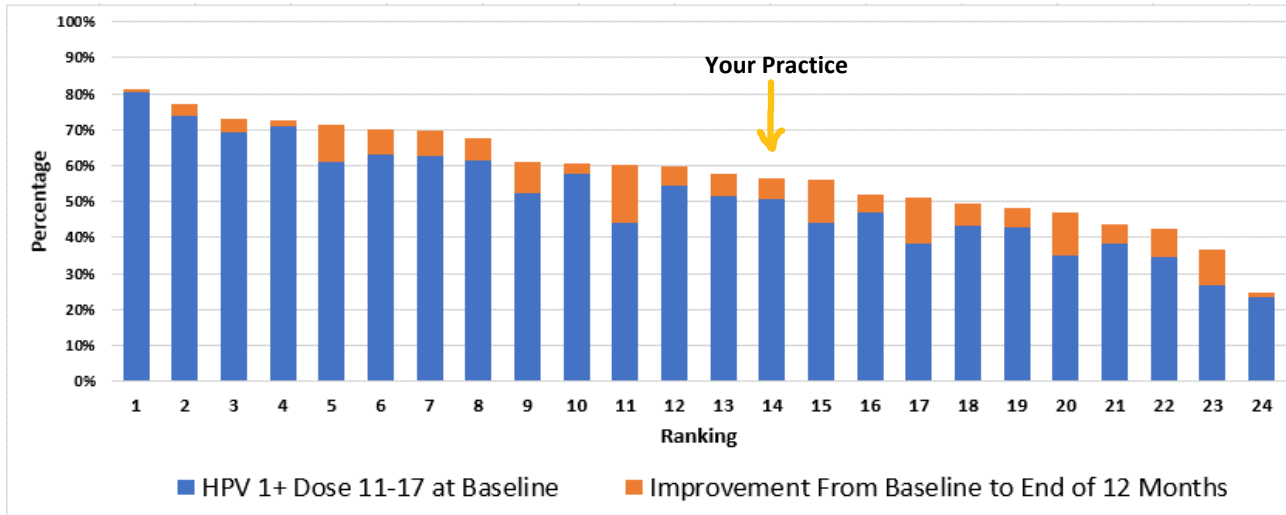
Note: US and TN data were updated for 2018



Notes: Rates are for males and females combined.
Practice rates calculated on all active patients (at least one visit in past three years), ages 11-17 or ages 13-17, as indicated.

	Baseline			First MOC Project						Second MOC Project						Maintenance Period											
	Dec 2017			Y1Q1			Y1Q2			Y1Q3			Y1Q4			Y2Q1			Y2Q2			Y2Q3			Y2Q4		
	#	Total	%	#	Total	%	#	Total	%	#	Total	%	#	Total	%	#	Total	%	#	Total	%	#	Total	%	#	Total	%
Ages 11-17	652	2145	30%	658	2181	30%	717	2206	33%	735	2229	33%	735	2252	33%	726	2243	32%	752	2268	33%	778	2248	35%	803	2266	35%
Ages 13-17	583	1429	41%	594	1473	40%	640	1505	43%	660	1528	43%	664	1558	43%	665	1532	43%	687	1535	45%	701	1506	47%	734	1512	49%

Measure: HPV 1+ Dose 11-17 yo
Description: Ranking of HPV vaccine initiation of all active patients ages 11-17 (%) among study sites



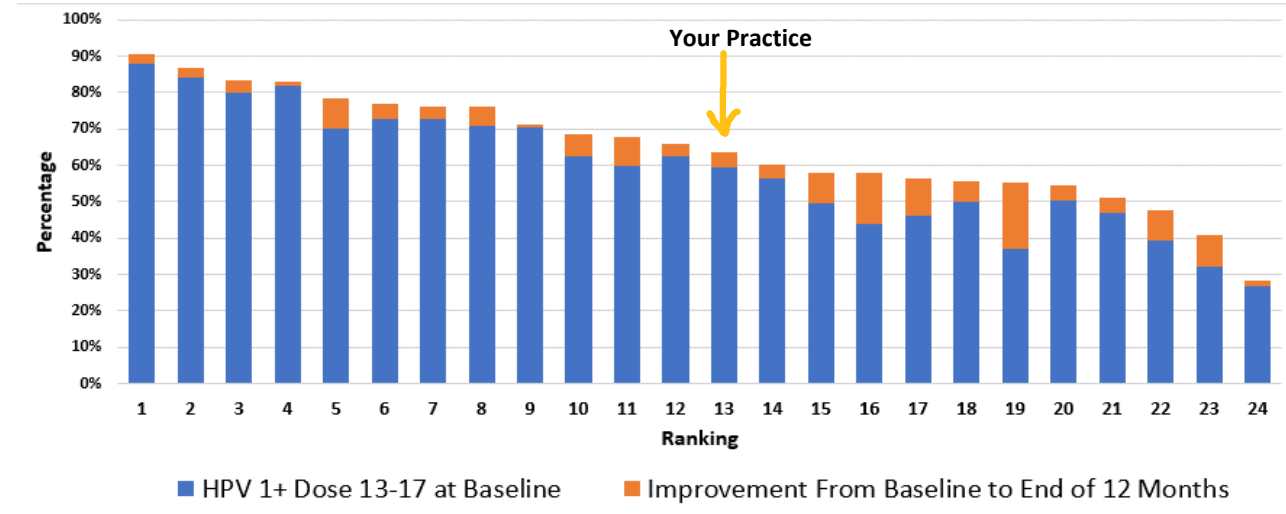
Your practice ranked **14th** in **initiating** the HPV vaccine series among patients ages 11-17.

Baseline: 50.8% (Jan 2018).

End of 12 months: 56.5% (Jan 2019).

Improvement: 5.7 percentage point increase in 12 months.

Measure: HPV 1+ Dose 13-17 yo
Description: Ranking of HPV vaccine initiation of all active patients ages 13-17 (%) among study sites



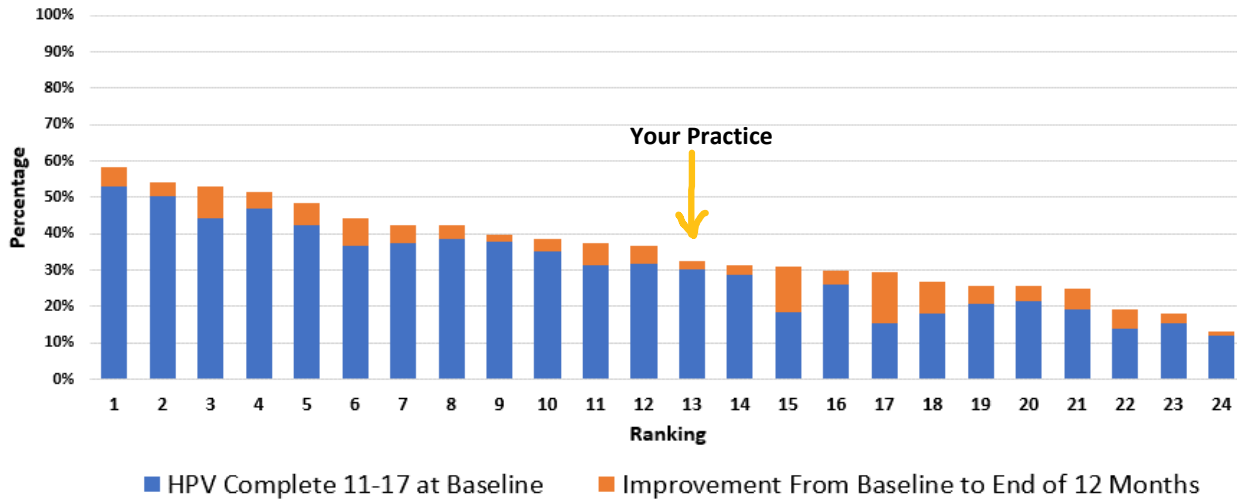
Your practice ranked **13th** in **initiating** the HPV vaccine series among patients ages 13-17.

Baseline: 59.7% (Jan 2018).

End of 12 months: 63.5% (Jan 2019).

Improvement: 3.8 percentage point increase in 12 months.

Measure: HPV Complete 11-17 yo
Description: Ranking of HPV vaccine completion of all active patients ages 11-17 (%) among study sites



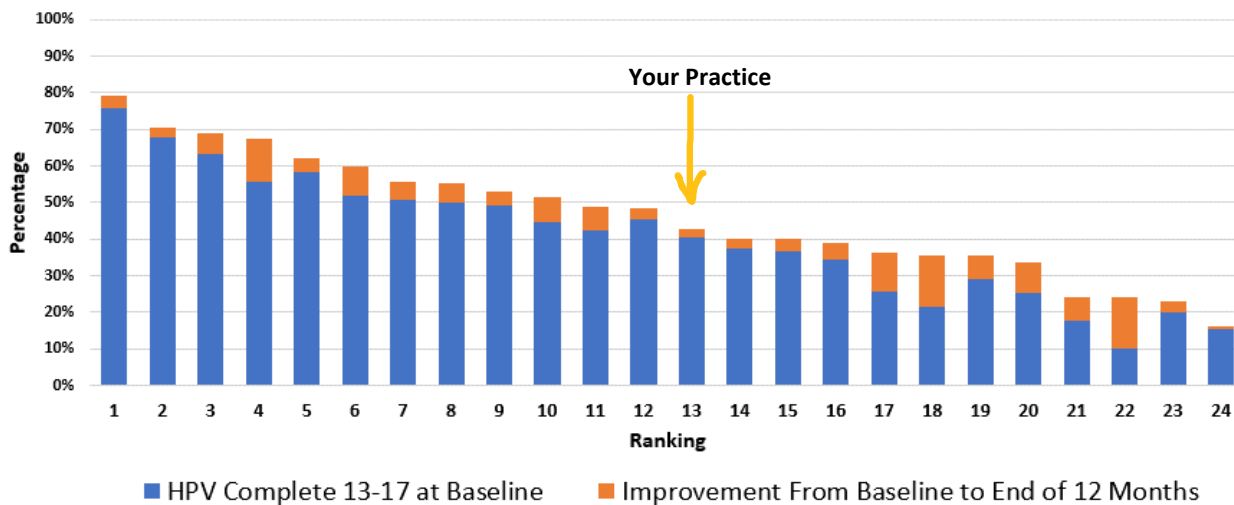
Your practice ranked **13th** in **completing** the HPV vaccine series among patients ages 11-17.

Baseline: 30.2% (Jan 2018).

End of 12 months: 32.6% (Jan 2019).

Improvement: 2.4 percentage point increase in 12 months.

Measure: HPV Complete 13-17 yo
Description: Ranking of HPV vaccine completion of all active patients ages 13-17 (%) among study sites



Your practice ranked **13th** in **completing** the HPV vaccine series among patients ages 13-17.

Baseline: 40.6% (Jan 2018).

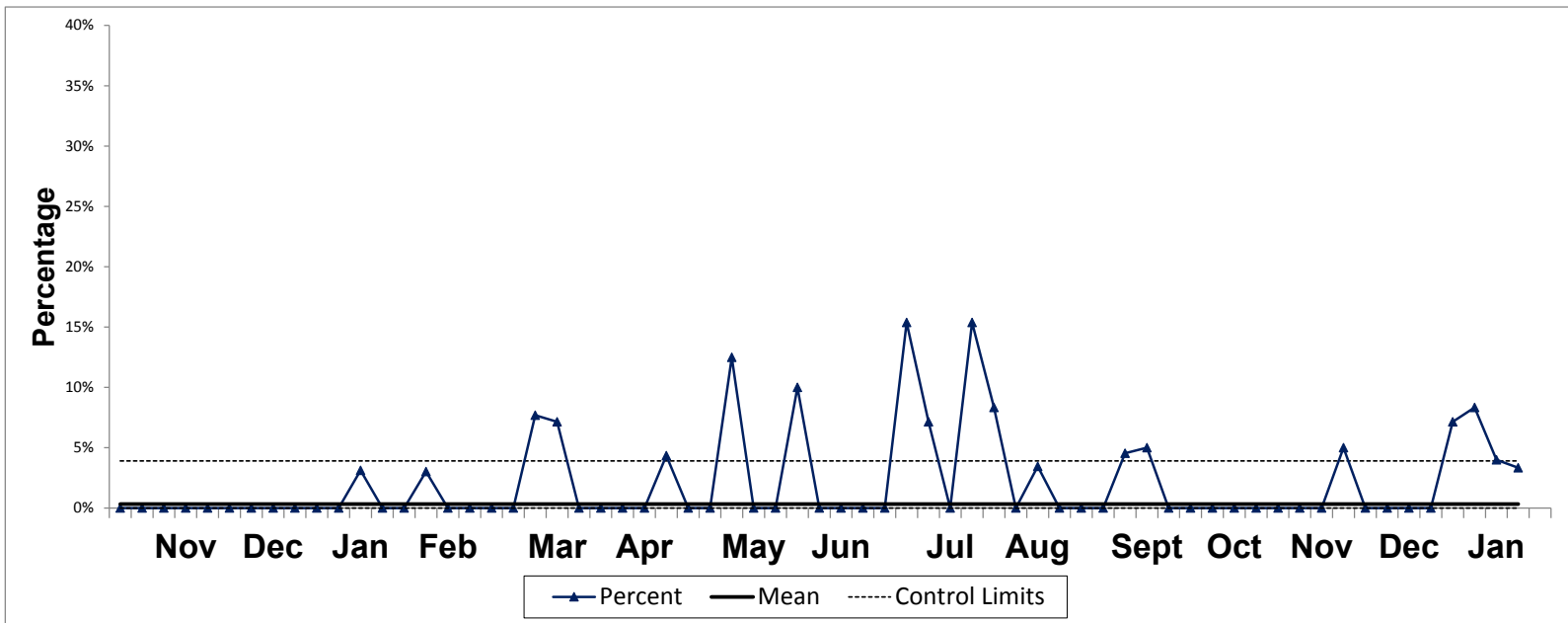
End of 12 months: 42.6% (Jan 2019).

Improvement: 2.0 percentage point increase in 12 months.

Weekly Measure #: 2

Name: HPV Dose (Non-Well)

Description: NON-WELL clinic visits with patients up-to-date for HPV vaccine (% of visits with HPV due, ages 11-17)



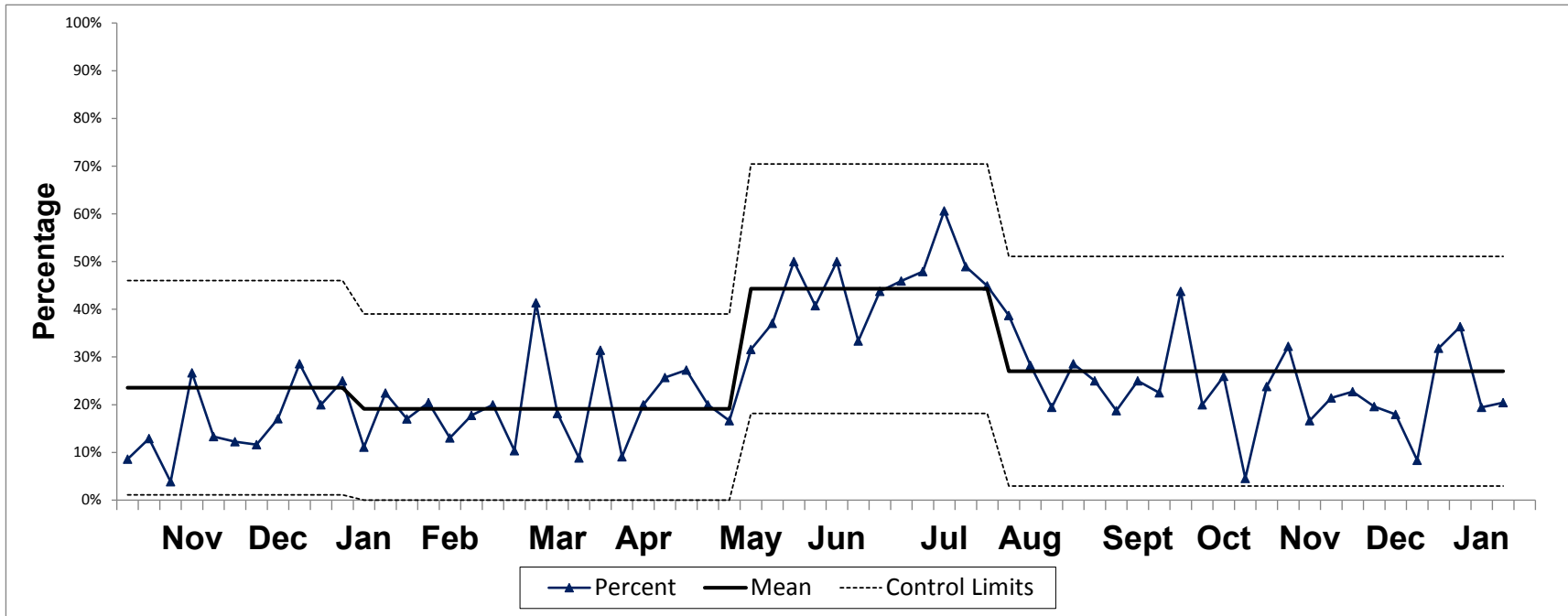
	Jan				Feb				Mar				Apr				May				Jun						
2017	Week	1	2	3	4	5	6	7	8	9	10	11	12	13	14	15	16	17	18	19	20	21	22	23	24	25	26
	Complete	0	1	0	2	1	1	1	0	2	0	4	1	0	0	1	1	0	2	0	0	1	1	0	1	0	0
	Total	13	33	33	38	52	47	52	39	38	24	26	37	18	42	26	24	24	26	28	26	20	8	14	11	10	10
	Percent	0%	3%	0%	5%	2%	2%	2%	0%	5%	0%	15%	3%	0%	0%	4%	4%	0%	8%	0%	0%	5%	13%	0%	9%	0%	0%
2018	Complete	1	0	0	0	0	1	1	0	1	1	0	0	0	1	2	1	0	2	0	0	1	1	2	1	1	0
	Total	22	31	18	23	36	47	44	41	35	31	18	27	20	19	20	28	26	23	22	19	27	17	14	14	14	11
	Percent	5%	0%	0%	0%	0%	2%	2%	0%	3%	3%	0%	0%	0%	5%	10%	4%	0%	9%	0%	0%	4%	6%	14%	7%	7%	0%
2019	Complete	0	0	1	0	0	1	0	0	0	0	1	1	0	0	0	0	1	0	0	2	0	0	1	0	0	0
	Total	11	17	32	31	36	33	38	33	24	23	13	14	25	22	20	15	23	22	25	16	14	8	10	10	8	9
	Percent	0%	0%	3%	0%	0%	3%	0%	0%	0%	0%	8%	7%	0%	0%	0%	0%	4%	0%	0%	13%	0%	0%	10%	0%	0%	0%
2020	Complete	2	2	2	2																						
	Total	28	24	50	60																						
	Percent	7%	8%	4%	3%																						

	Jul				Aug				Sep				Oct				Nov				Dec						
2017	Week	27	28	29	30	31	32	33	34	35	36	37	38	39	40	41	42	43	44	45	46	47	48	49	50	51	52
	Complete	1	0	1	2	2	1	1	2	2	0	0	0	0	1	1	0	0	4	0	1	0	2	0	0	3	0
	Total	17	17	18	22	12	22	31	26	24	17	27	20	29	22	6	14	22	27	26	36	21	39	32	26	35	12
	Percent	6%	0%	6%	9%	17%	5%	3%	8%	8%	0%	0%	0%	0%	5%	17%	0%	0%	15%	0%	3%	0%	5%	0%	0%	9%	0%
2018	Complete	0	0	0	2	1	0	1	1	2	1	0	1	1	1	2	2	1	0	0	0	0	0	0	0	0	0
	Total	7	8	10	12	7	11	15	23	26	13	18	17	22	22	20	19	23	21	22	22	10	21	39	35	32	9
	Percent	0%	0%	0%	17%	14%	0%	7%	4%	8%	8%	0%	6%	5%	10%	11%	4%	0%	0%	0%	0%	0%	0%	0%	0%	0%	0%
2019	Complete	0	2	1	0	2	2	0	1	0	0	0	1	1	0	0	0	0	0	0	0	0	1	0	0	0	0
	Total	11	13	14	7	13	24	15	29	17	12	12	22	20	28	13	13	17	17	13	18	29	20	64	78	54	38
	Percent	0%	15%	7%	0%	15%	8%	0%	3%	0%	0%	0%	5%	5%	0%	0%	0%	0%	0%	0%	0%	5%	0%	0%	0%	0%	0%

Weekly Measure #: 3

Name: HPV Dose Due (All)

Description: ALL visits with patients up-to-date for HPV vaccine (% of visits with HPV due, ages 11-17)



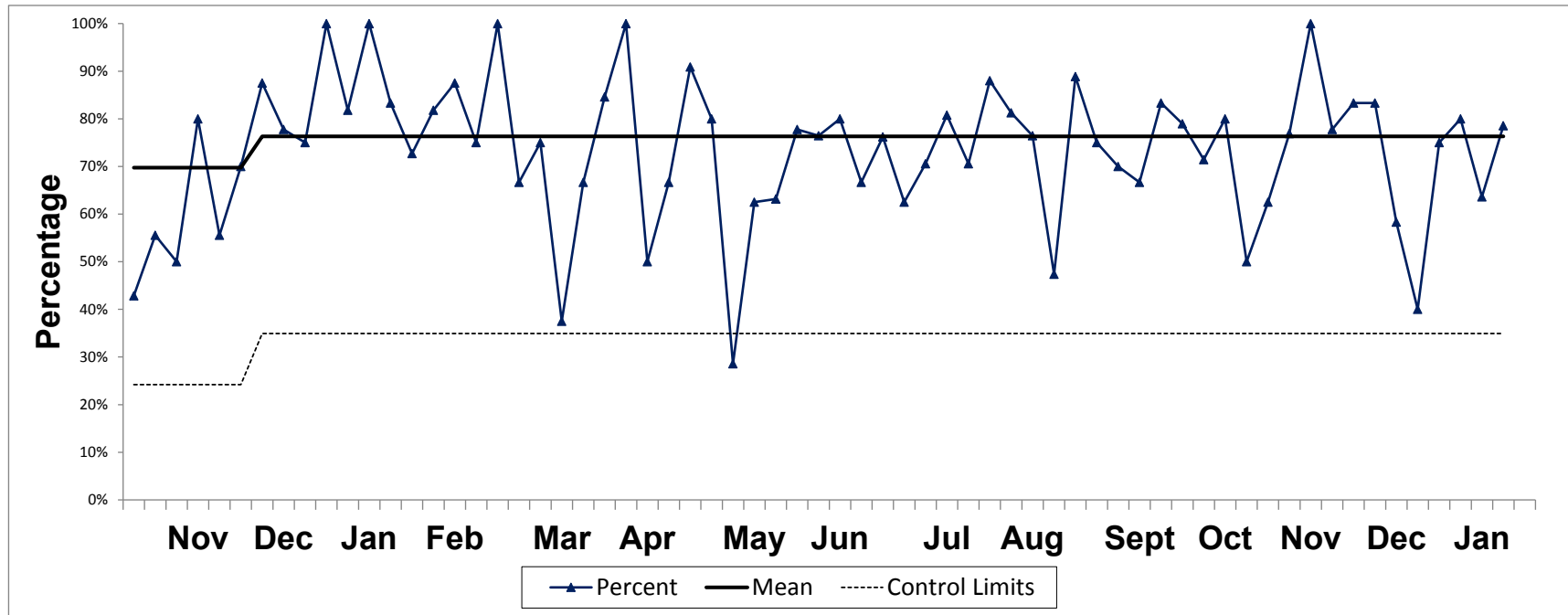
	Jan				Feb				Mar				Apr				May				Jun					
2017	1	2	3	4	5	6	7	8	9	10	11	12	13	14	15	16	17	18	19	20	21	22	23	24	25	26
Complete	4	4	2	9	2	4	6	5	7	2	12	4	5	4	9	10	7	8	9	10	8	8	14	15	6	12
Total	21	38	37	47	60	52	64	49	44	30	39	47	28	48	37	39	159	39	42	44	36	30	47	35	25	29
Percent	19%	11%	5%	19%	3%	8%	9%	10%	16%	7%	31%	9%	18%	8%	24%	26%	4%	21%	21%	23%	22%	27%	30%	43%	24%	41%
2018	5	1	6	3	1	4	6	9	8	7	7	3	2	8	6	4	4	8	6	8	12	7	9	14	20	18
Total	29	32	26	27	40	53	58	56	45	39	29	32	29	32	25	33	40	31	29	37	52	28	29	31	36	43
Percent	17%	3%	23%	11%	3%	8%	10%	16%	18%	18%	24%	9%	7%	25%	24%	12%	10%	26%	21%	22%	23%	25%	31%	45%	56%	42%
2019	3	7	4	11	8	9	6	8	6	3	12	4	3	11	2	5	9	9	7	5	12	10	14	11	14	9
Total	15	28	36	49	47	44	46	45	30	29	29	22	34	35	22	25	35	33	35	30	38	27	28	27	28	27
Percent	20%	25%	11%	22%	17%	20%	13%	18%	20%	10%	41%	18%	9%	31%	9%	20%	26%	27%	20%	17%	32%	37%	50%	41%	50%	33%
2020	14	16	14	18																						
Total	44	44	72	88																						
Percent	32%	36%	19%	20%																						

	Jul				Aug				Sep				Oct				Nov				Dec					
2017	27	28	29	30	31	32	33	34	35	36	37	38	39	40	41	42	43	44	45	46	47	48	49	50	51	52
Complete	12	21	12	24	13	9	15	9	9	7	5	11	5	12	10	3	11	17	1	6	8	8	5	2	15	3
Total	40	49	52	76	44	43	51	46	39	25	45	36	38	38	28	20	36	44	30	49	31	50	41	32	57	24
Percent	30%	43%	23%	32%	30%	21%	29%	20%	23%	28%	11%	31%	13%	32%	36%	15%	31%	39%	3%	12%	26%	16%	12%	6%	26%	13%

Weekly Measure #: 4

Name: HPV Recommend-Well

Description: WELL visits with documented provider recommendation (given or refused) (% of visits with HPV due, ages 11-17)



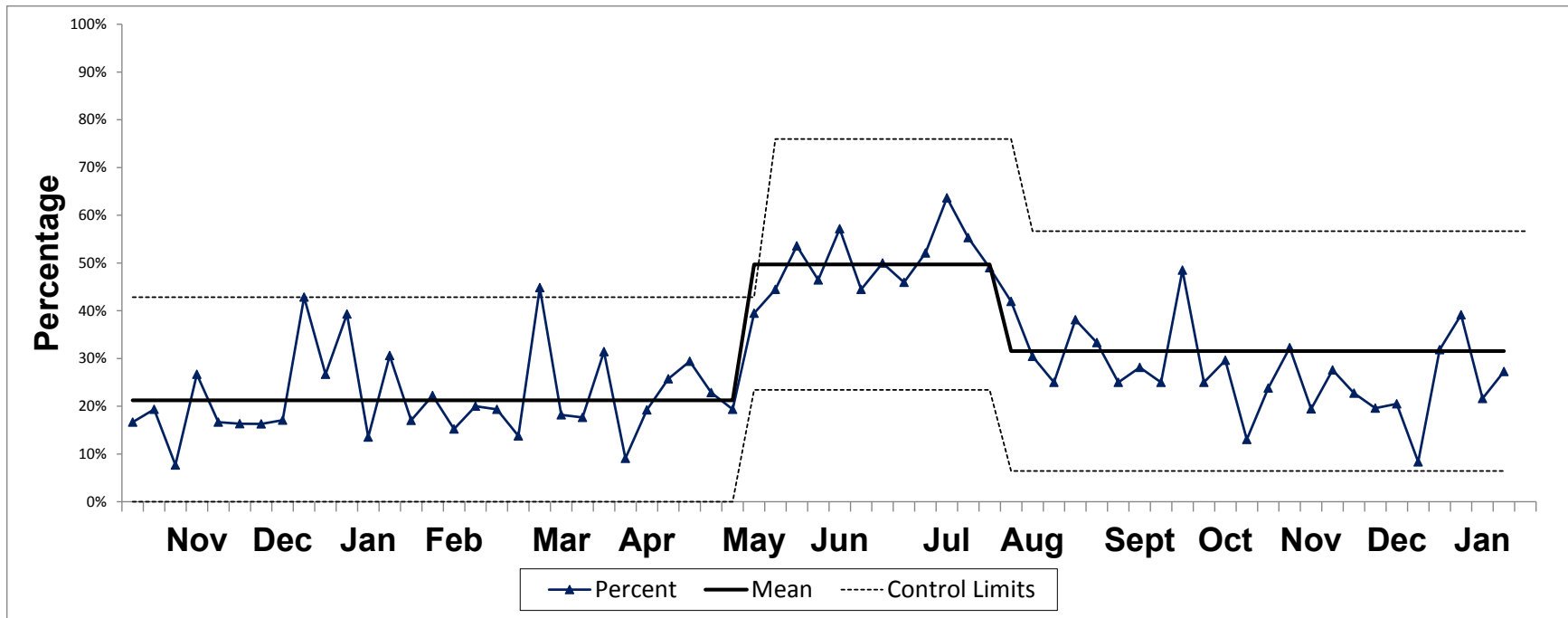
	Jan				Feb				Mar				Apr				May				Jun					
2017	1	2	3	4	5	6	7	8	9	10	11	12	13	14	15	16	17	18	19	20	21	22	23	24	25	26
Complete	4	3	2	7	1	3	5	5	5	2	9	3	5	4	8	9	7	6	9	10	7	7	14	14	6	12
Total	8	5	4	9	8	5	12	10	6	6	13	10	10	6	11	15	135	13	14	18	16	22	33	24	15	19
Percent	50%	60%	50%	78%	13%	60%	42%	50%	83%	33%	69%	30%	50%	67%	73%	60%	5%	46%	64%	56%	44%	32%	42%	58%	40%	63%
2018	4	1	7	3	1	5	8	12	8	7	8	3	5	10	5	5	6	7	6	14	13	6	11	16	20	25
Complete	4	1	7	3	1	5	8	12	8	7	8	3	5	10	5	5	6	7	6	14	13	6	11	16	20	25
Total	7	1	8	4	4	6	14	15	10	8	11	5	9	13	5	5	14	8	7	18	25	11	15	17	22	32
Percent	57%	100%	88%	75%	25%	83%	57%	80%	80%	88%	73%	60%	56%	77%	100%	100%	43%	88%	86%	78%	52%	55%	73%	94%	91%	78%
2019	4	9	4	15	8	9	7	9	6	4	12	3	6	11	2	5	8	10	8	4	15	12	14	13	16	12
Complete	4	9	4	15	8	9	7	9	6	4	12	3	6	11	2	5	8	10	8	4	15	12	14	13	16	12
Total	4	11	4	18	11	11	8	12	6	6	16	8	9	13	2	10	12	11	10	14	24	19	18	17	20	18
Percent	100%	82%	100%	83%	73%	82%	88%	75%	100%	67%	75%	38%	67%	85%	100%	50%	67%	91%	80%	29%	63%	63%	78%	76%	80%	67%
2020	12	16	14	22																						
Complete	12	16	14	22																						
Total	16	20	22	28																						
Percent	75%	80%	64%	79%																						

	Jul				Aug				Sep				Oct				Nov				Dec					
2017	27	28	29	30	31	32	33	34	35	36	37	38	39	40	41	42	43	44	45	46	47	48	49	50	51	52
Complete	11	21	11	22	11	8	14	7	7	7	5	11	6	12	9	3	11	13	3	6	8	7	5	3	13	6
Total	23	32	34	54	32	21	20	20	15	8	18	16	9	16	22	6	14	17	4	13	10	11	9	6	22	12
Percent	48%	66%	32%	41%	34%	38%	70%	35%	47%	88%	28%	69%	67%	75%	41%	50%	79%	76%	75%	46%	80%	64%	56%	50%	59%	50%

Weekly Measure #: 5

Name: HPV Recommend-All

Description: ALL visits with documented provider recommendation (given or refused) (% of visits with HPV due, ages 11-17)



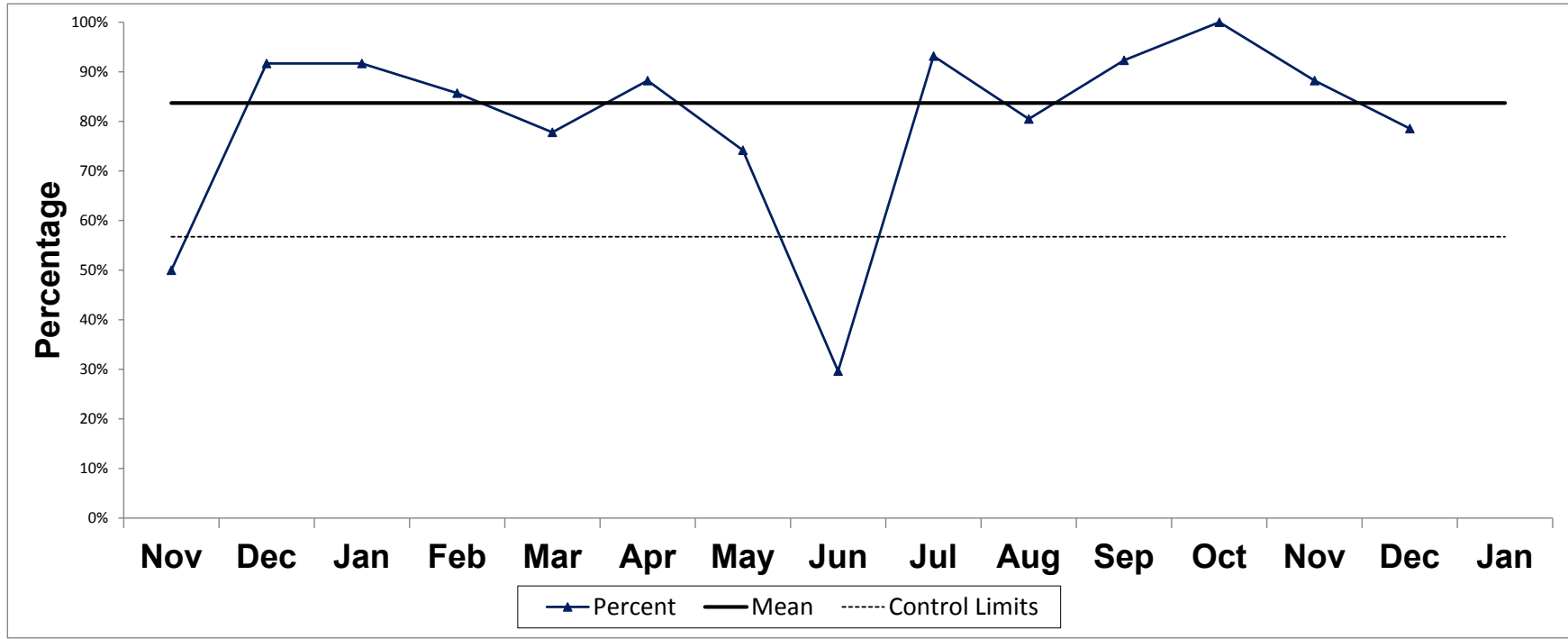
		Jan				Feb				Mar				Apr				May				Jun							
Week		1	2	3	4	5	6	7	8	9	10	11	12	13	14	15	16	17	18	19	20	21	22	23	24	25	26		
2017	Complete	4	4	2	9	2	4	6	5	7	2	13	4	5	4	9	10	7	8	9	10	8	8	14	15	6	12		
	Total	21	38	37	47	60	52	64	49	44	30	39	47	28	48	37	39	154	39	42	44	36	30	47	35	25	29		
	Percent	19%	11%	5%	19%	3%	8%	9%	10%	16%	7%	33%	9%	18%	8%	24%	26%	5%	21%	21%	23%	22%	27%	30%	43%	24%	41%		
2018	Complete	5	1	7	3	2	7	9	12	9	9	8	3	5	11	7	6	6	9	7	14	14	7	13	17	21	25		
	Total	29	32	26	27	40	53	58	57	47	39	29	32	29	32	25	33	40	31	29	37	52	28	29	31	36	43		
	Percent	17%	3%	27%	11%	5%	13%	16%	21%	19%	23%	28%	9%	17%	34%	28%	18%	15%	29%	24%	38%	27%	25%	45%	55%	58%	58%		
2019	Complete	4	11	5	15	8	10	7	9	6	4	13	4	6	11	2	5	9	10	8	6	15	12	15	13	16	12		
	Total	15	28	37	49	47	45	46	45	31	29	29	22	34	35	22	26	35	34	35	31	38	27	28	28	28	27		
	Percent	27%	39%	14%	31%	17%	22%	15%	20%	19%	14%	45%	18%	18%	31%	9%	19%	26%	29%	23%	19%	39%	44%	54%	46%	57%	44%		
2020	Complete	14	18	16	24																								
	Total	44	46	74	88																								
	Percent	32%	39%	22%	27%																								

		Jul				Aug				Sep				Oct				Nov				Dec					
Week		27	28	29	30	31	32	33	34	35	36	37	38	39	40	41	42	43	44	45	46	47	48	49	50	51	52
2017	Complete	12	21	12	24	13	9	15	9	9	7	5	11	6	13	10	3	11	18	4	10	8	9	5	3	16	6
	Total	40	49	52	76	44	43	51	46	39	25	45	36	38	38	28	20	36	44	30	49	31	50	41	32	57	24
	Percent	30%	43%	23%	32%	30%	21%	29%	20%	23%	28%	11%	31%	16%	34%	36%	15%	31%	41%	13%	20%	26%	18%	12%	9%	28%	25%

Weekly Measure #: 6

Name: Bundle Adol Vax

Description: Visits for ages 11-12 year-olds in which HPV & meningococcal vaccines are bundled with Tdap, when due (% of visits, ages 11-12)



		Jan	Feb	Mar	Apr	May	Jun	Jul	Aug	Sep	Oct	Nov	Dec
2017	Complete	8	6	6	7	17	13	13	11	11	14	11	6
	Total	9	7	9	9	26	21	24	20	13	17	12	8
	Percent	89%	86%	67%	78%	65%	62%	54%	55%	85%	82%	92%	75%
2018	Complete	0	4	8	10	14	13	30	15	7	16	7	11
	Total	0	7	10	12	18	15	37	16	9	18	14	12
	Percent	0%	57%	80%	83%	78%	87%	81%	94%	78%	89%	50%	92%
2019	Complete	11	18	14	15	23	16	41	33	12	16	15	22
	Total	12	21	18	17	31	54	44	41	13	16	17	28
	Percent	91.67%	85.71%	77.78%	88.24%	74.19%	29.63%	93.18%	80.49%	92.31%	100.00%	88.24%	78.57%