



HPV Vaccine Quality Improvement Study Quarterly Data & Feedback Report

Practice ID:	23		
Baseline Period:	Feb 2017-Jan 2018	Date of Data Pull:	3/2/2020
MOC Project Periods:	Feb 2018-Jan 2019	Data through:	2020 Week 7

This Data and Feedback Report complements the weekly run chart data reports you receive from VHealth.

In this report, we present your data in the form of control charts, which allow us to apply some statistical rules to determine whether or not movements in the data over time represent real shifts in the outcome measures, rather than just random variation.

We have included a written summary interpreting each measure for you -- what we see, what it could mean, and recommended actions for your consideration.

Data Summary & Feedback

Report Period: Nov 2019 - Jan 2020

1st MOC Project Change Options: A - Bundle 3 adolescent vaccines; C - Provider prompts

2nd MOC Project Change Options: D - Reminders for Follow Up HPV Doses; F - Reminders for due/overdue well visits

Summary Measure #1: 1+ Dose (Initiation) Among entire active patient population		
What we see	What it could mean	Recommended actions
Year 2, all quarters are above the TN percentages for ages 13-17, and Q4 reaches the US rate at 68.1. <i>Note: both the TN and US percentages for 2018 are higher than the 2017 rates.</i>	Your practice is making progress on initiation of the vaccine, with opportunity to continue to improve.	Continue to include data review as a standing agenda item in meetings. As necessary, remind providers and staff of the adopted workflows to continue your improvement trend.
For ages 11-17, there is a 10.5 percentage point increase from baseline to end of Y2Q4. For ages 13-17, an increase of 11.7 percentage points.	Your practice is making small gains each quarter.	Continue to monitor over time to hold your gains and continue to improve.
Summary Measure #2: All Doses (Complete) Among entire active patient population		
What we see	What it could mean	Recommended actions
Rates for Y2Q1, Q2, Q3 and Q4 exceed the TN rate for ages 13-17. Baseline and all quarters are below the US rate. <i>Note: both the TN and US rates for 2018 are higher than the 2017 rates.</i>	Your practice is making small gains on completion of the vaccine series, with opportunities to continue to improve.	Revisit your adopted workflow for 2nd/3rd dose reminders. Are the steps being carried out consistently? Revisit adopted workflows for the provider prompts and other changes as a reminder for entire practice.
For ages 11-17, there is a 8.6 percentage point increase from baseline to end of Y2Q4. For ages 13-17, an increase of 10.6 percentage points.	There is progress in completion rates, but additional increases are needed for it to be a significant improvement.	Continue to monitor over time to hold your gains and continue to improve.
Weekly Measure #1: HPV Dose Due (Well)		
WELL visits with patients up-to-date for HPV vaccine (% of visits with HPV due, ages 11-17)		
What we see	What it could mean	Recommended actions
Baseline mean (average): 61% of patients who were due, received an HPV vaccine dose during well visits. The mean dropped to 55% in October, increased to 64% in May and remains at 64% through January 2020.	More well visits during the spring/summer months is a common seasonal pattern.	Review the data and adopted workflows with providers. Discuss potential reasons for the drop and address any obstacles that may exist. Continue to monitor over time.
Weekly Measure #2: HPV Dose Due (Non-Well)		
NON-WELL visits with patients up-to-date for HPV vaccine (% of visits with HPV due, ages 11-17)		
What we see	What it could mean	Recommended actions
Baseline mean (average) of 2%, increased to 4% then dropped back to 2% in December 2019 and remains at 2% through January 2020.	Your practice did not select offering the vaccine during non-well visits as one of the changes, so no change was expected.	Consider if offering the vaccine during non-well visits is a workflow your practice would like to implement as standard practice in the future.

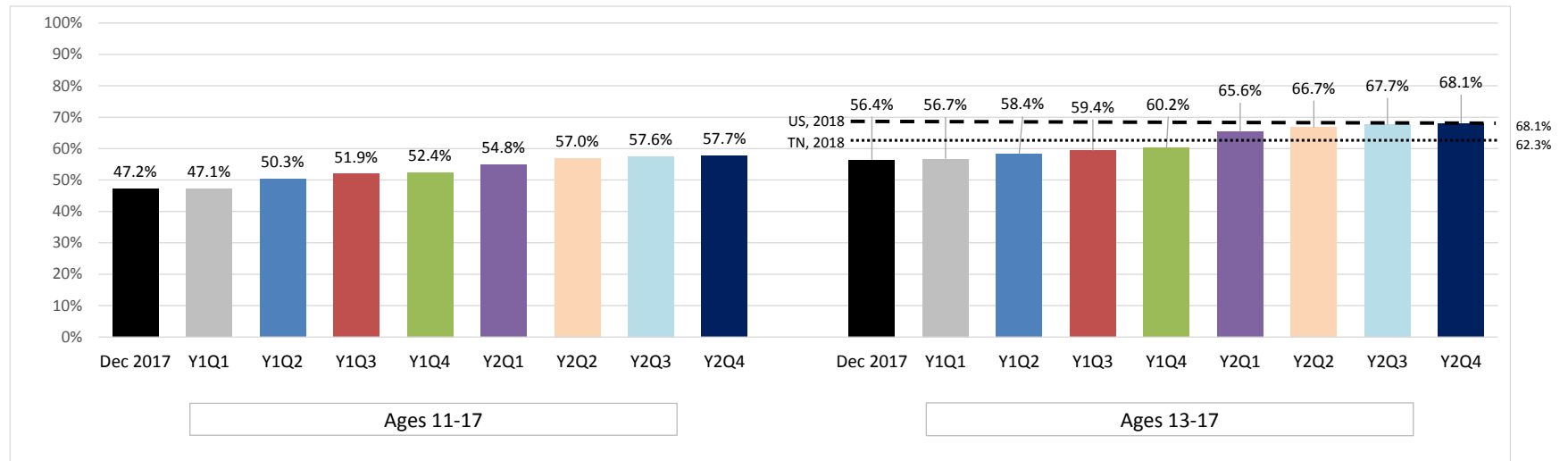
Data Summary & Feedback

Report Period: Nov 2019 - Jan 2020

Weekly Measure #3: HPV Dose Due (All)		
<i>ALL visits with patients up-to-date for HPV vaccine (% of visits with HPV due, ages 11-17)</i>		
What we see	What it could mean	Recommended actions
This measure is a combination of Measures #1 and #2. The mean (average) fluctuates from 13%, 27%, 37% in May, then drops to 22%, then 13% in November 2019.	Increases during the spring/summer months is a common seasonal pattern.	Continue to monitor over time.
Weekly Measure #4: HPV Recommend-Well		
<i>WELL visits with documented provider recommendation (given or refused) (% of visits with HPV due, ages 11-17)</i>		
What we see	What it could mean	Recommended actions
This measure shows provider recommendation in well visits, counted as vaccines given plus vaccines refused (if documented). The pattern and data are almost identical to Measure #1.	Providers are not documenting refusals during well visits using the codes provided or, if documenting, we may need to adjust how VHealth pulls your documented refusals.	Discuss with your team where and how they are documenting refusals for well visits. Review "dummy refusal codes." If needed, submit a technical assistance ticket to VHealth to determine if they are capturing documented refusals.
Weekly Measure #5: HPV Recommend-All		
<i>ALL visits with documented provider recommendation (given or refused) (% of visits with HPV due, ages 11-17)</i>		
What we see	What it could mean	Recommended actions
This measure shows provider recommendation in ALL visits, counted as vaccines given plus vaccines refused (if documented). The pattern and data are almost identical to Measure #3.	Providers are not documenting refusals during non-well visits using the codes provided or, if documenting, we may need to adjust how VHealth pulls your documented refusals.	Discuss with your team where and how they are documenting refusals for non-well visits. Review "dummy refusal codes." If needed, submit a technical assistance ticket to VHealth to determine if they are capturing documented refusals.
Weekly Measure #6: Bundle Adol Vax		
<i>Visits for ages 11-12 year-olds in which HPV & meningococcal vaccines are bundled with Tdap, when due (% of visits, ages 11-12)</i>		
What we see	What it could mean	Recommended actions
The mean (average) of 69% drops to 60% in February 2019 and remains the same through January 2020.	Your mean has dropped 9% since your initial improvement from your implementation of vaccine communication strategies, bundling, and provider prompts.	Discuss possible reasons for the drop. What are the obstacles to bundling for all 11-12 year old visits. Consider adding Bug Your Doc patient education materials to promote bundling all 3 vaccines for 11-12 year-old patients.

Summary Measure: 1+ Dose (Initiation)

Note: US and TN data were updated for 2018

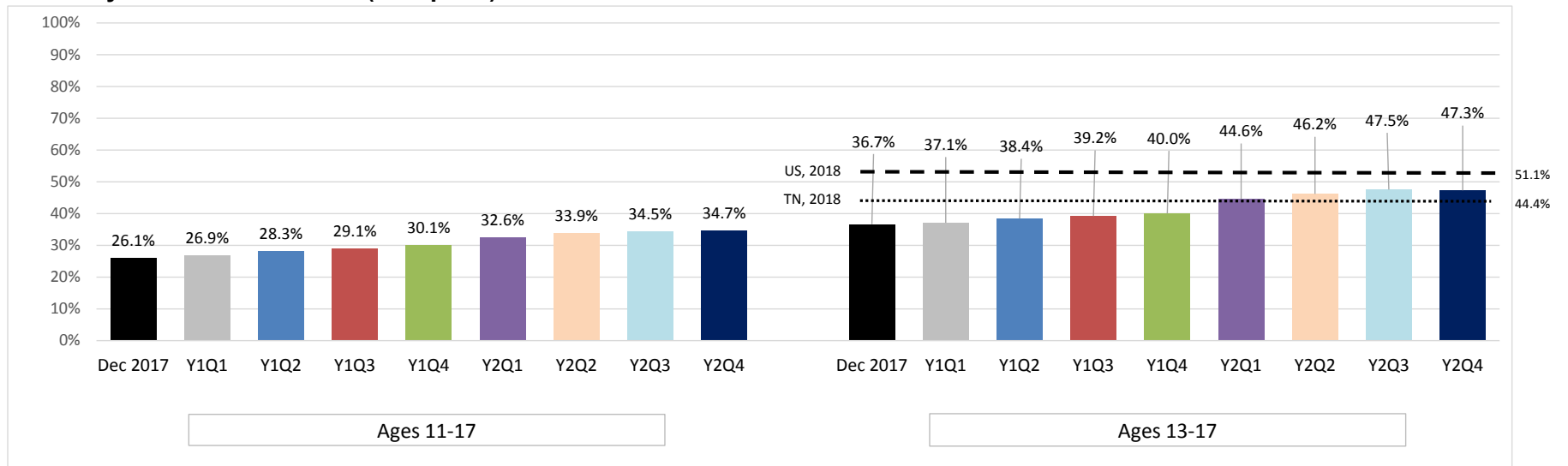


Notes: Rates are for males and females combined.
Practice rates calculated on all active patients (at least one visit in past three years), ages 11-17 or ages 13-17, as indicated.

	Baseline			First MOC Project						Second MOC Project						Maintenance Period											
	Dec 2017			Y1Q1			Y1Q2			Y1Q3			Y1Q4			Y2Q1			Y2Q2			Y2Q3			Y2Q4		
	#	Total	%	#	Total	%	#	Total	%	#	Total	%	#	Total	%	#	Total	%	#	Total	%	#	Total	%	#	Total	%
Ages 11-17	4442	9404	47%	4528	9608	47%	4940	9819	50%	5205	10025	52%	5260	10043	52%	5146	9382	55%	5496	9644	57%	5723	9939	58%	5725	9923	58%
Ages 13-17	3475	6157	56%	3591	6328	57%	3791	6490	58%	3945	6647	59%	4067	6758	60%	4013	6121	66%	4206	6303	67%	4401	6505	68%	4479	6575	68%

Summary Measure: All Doses (Complete)

Note: US and TN data were updated for 2018



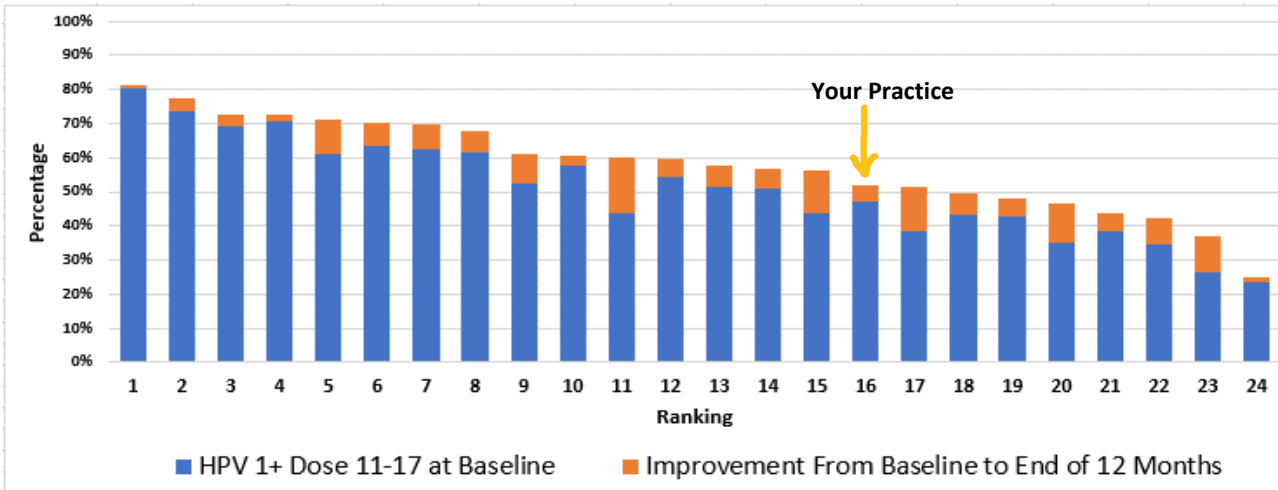
Notes: Rates are for males and females combined.

Practice rates calculated on all active patients (at least one visit in past three years), ages 11-17 or ages 13-17, as indicated.

	Baseline			First MOC Project						Second MOC Project						Maintenance Period											
	Dec 2017			Y1Q1			Y1Q2			Y1Q3			Y1Q4			Y2Q1			Y2Q2			Y2Q3			Y2Q4		
	#	Total	%	#	Total	%	#	Total	%	#	Total	%	#	Total	%	#	Total	%	#	Total	%	#	Total	%	#	Total	%
Ages 11-17	2457	9404	26%	2589	9608	27%	2777	9819	28%	2914	10025	29%	3027	10043	30%	3054	9382	33%	3265	9644	34%	3427	9939	34%	3446	9923	35%
Ages 13-17	2257	6157	37%	2348	6328	37%	2494	6490	38%	2607	6647	39%	2703	6758	40%	2733	6121	45%	2911	6303	46%	3093	6505	48%	3110	6575	47%

Measure: HPV 1+ Dose 11-17 yo

Description: Ranking of HPV vaccine initiation of all active patients ages 11-17 (%) among study sites



Your practice ranked **16th** in **initiating** the HPV vaccine series among patients ages 11-17.

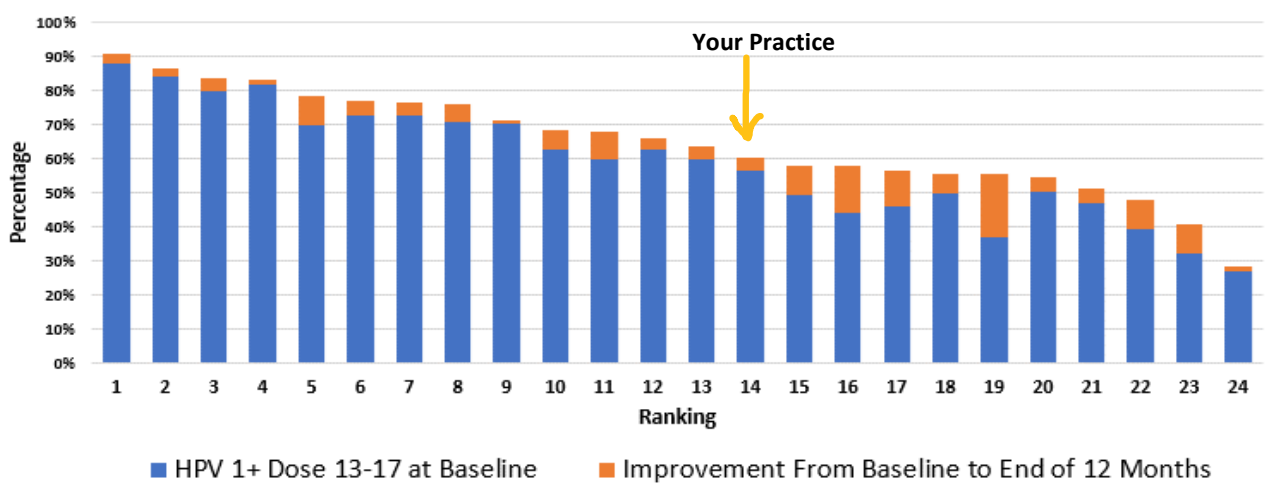
Baseline: 46.9% (Jan 2018).

End of 12 months: 51.9% (Jan 2019).

Improvement: 5.0 percentage point increase in 12 months.

Measure: HPV 1+ Dose 13-17 yo

Description: Ranking of HPV vaccine initiation of all active patients ages 13-17 (%) among study sites



Your practice ranked **14th** in **initiating** the HPV vaccine series among patients ages 13-17.

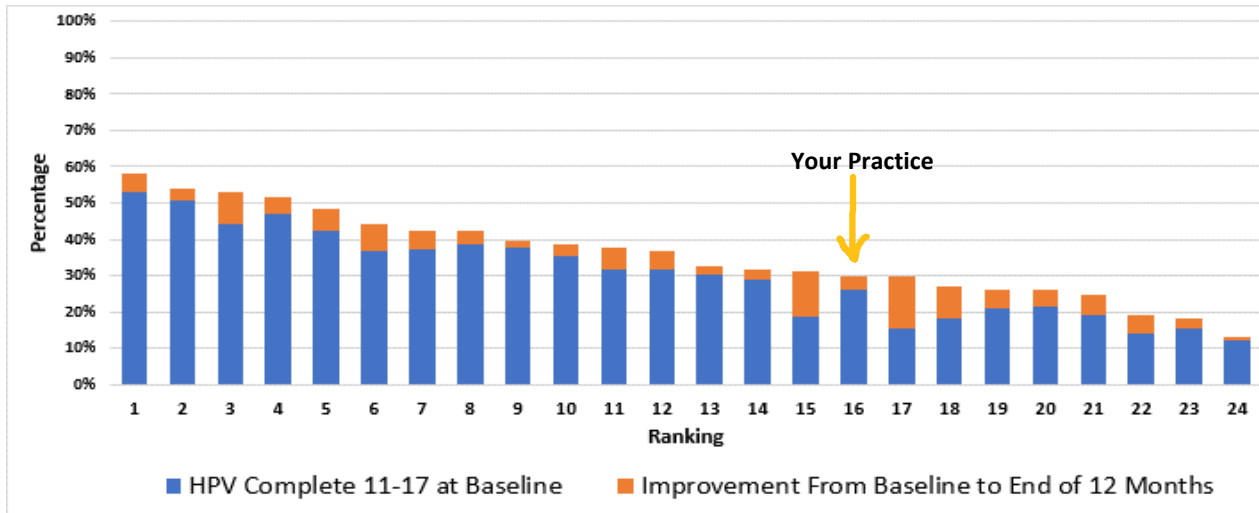
Baseline: 56.4% (Jan 2018).

End of 12 months: 60.3% (Jan 2019).

Improvement: 3.9 percentage point increase in 12 months.

Measure: HPV Complete 11-17 yo

Description: Ranking of HPV vaccine completion of all active patients ages 11-17 (%) among study sites



Your practice ranked **16th** in **completing** the HPV vaccine series among patients ages 11-17.

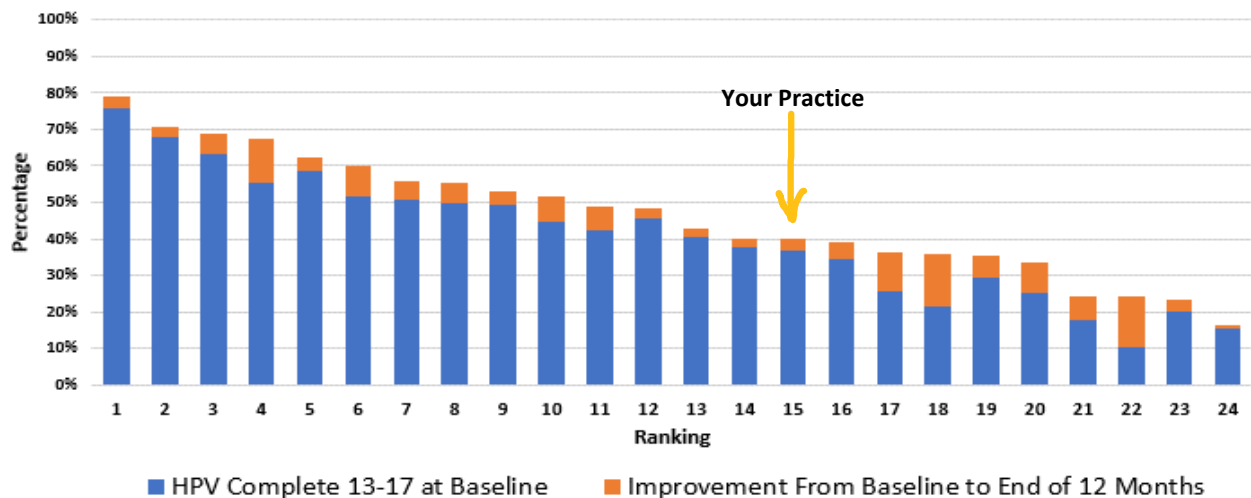
Baseline: 26.2% (Jan 2018).

End of 12 months: 29.9% (Jan 2019).

Improvement: 3.7 percentage point increase in 12 months.

Measure: HPV Complete 13-17 yo

Description: Ranking of HPV vaccine completion of all active patients ages 13-17 (%) among study sites



Your practice ranked **15th** in **completing** the HPV vaccine series among patients ages 13-17.

Baseline: 36.6% (Jan 2018).

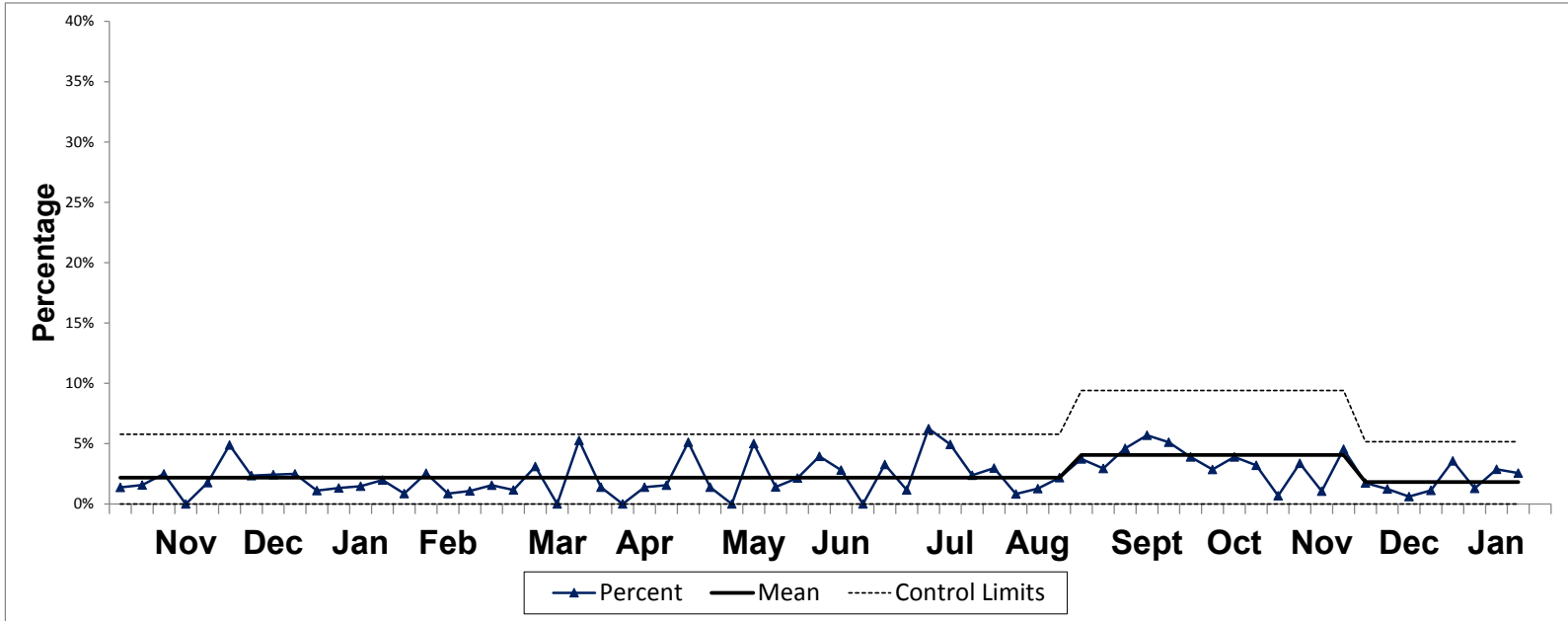
End of 12 months: 40.1% (Jan 2019).

Improvement: 3.5 percentage point increase in 12 months.

Weekly Measure #: 2

Name: HPV Dose (Non-Well)

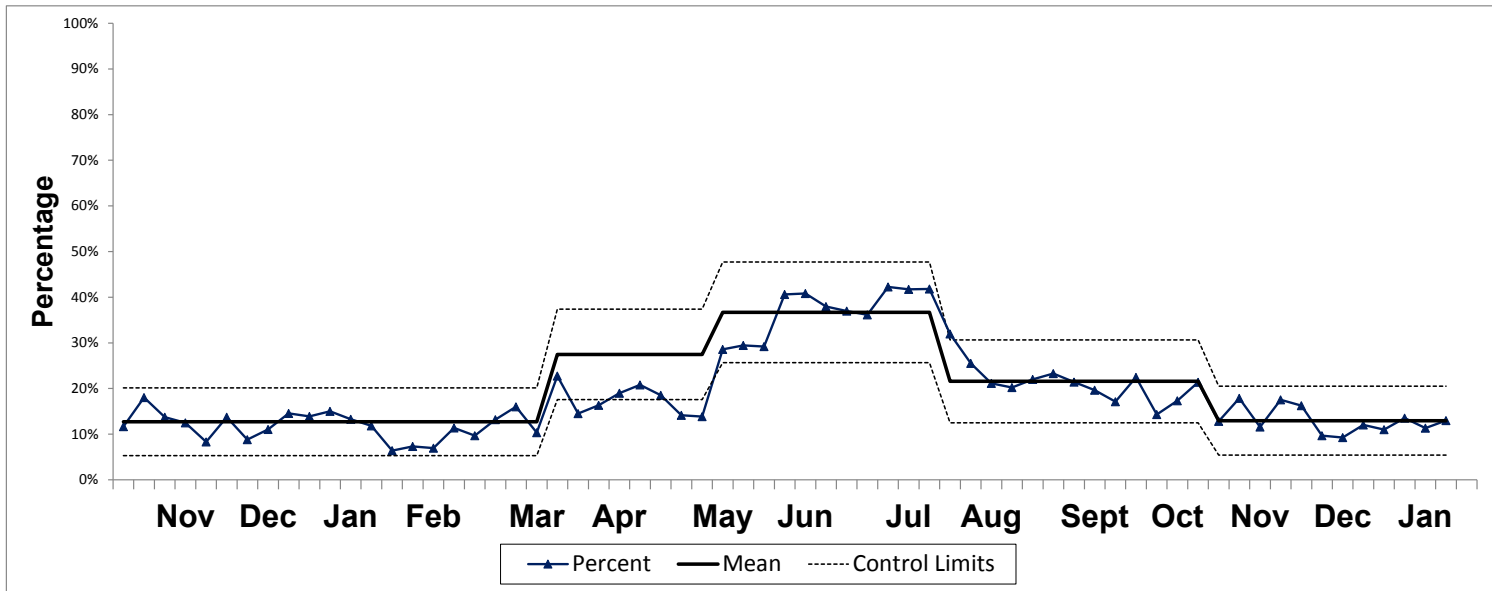
Description: NON-WELL clinic visits with patients up-to-date for HPV vaccine (% of visits with HPV due, ages 11-17)



	Jan		Feb				Mar					Apr					May				Jun			Jul		
Week	1	2	3	4	5	6	7	8	9	10	11	12	13	14	15	16	17	18	19	20	21	22	23	24	25	26
2017	Complete	7	3	8	3	2	4	5	3	1	1	0	5	1	5	5	2	4	5	4	6	4	4	4	4	1
	Total	116	186	213	232	245	265	300	206	213	212	226	158	185	208	175	150	180	167	190	161	109	78	77	70	76
	Percent	6%	2%	4%	1%	1%	2%	2%	1%	0%	0%	0%	3%	1%	2%	3%	1%	2%	3%	2%	4%	4%	5%	5%	6%	5%
2018	Complete	2	1	2	2	0	1	3	2	2	2	1	3	6	5	5	3	1	2	3	2	2	4	5	1	2
	Total	114	151	83	180	226	287	352	243	197	185	161	158	123	153	168	118	147	138	130	141	79	66	78	80	
	Percent	2%	1%	2%	1%	0%	0%	1%	1%	1%	1%	1%	2%	5%	3%	3%	3%	1%	1%	2%	1%	3%	3%	5%	6%	2%
2019	Complete	1	2	3	4	2	6	2	2	3	2	5	0	6	2	0	2	2	8	2	0	5	1	2	3	0
	Total	90	150	204	202	232	236	230	185	193	172	161	195	114	144	157	144	129	156	144	134	100	71	93	76	
	Percent	1%	1%	1%	2%	1%	3%	1%	1%	2%	1%	3%	0%	5%	1%	0%	1%	2%	5%	1%	0%	5%	1%	2%	4%	3%
2020	Complete	3	2	5	4																					
	Total	84	154	174	156																					
	Percent	4%	1%	3%	3%																					

	Jul			Aug				Sep					Oct				Nov				Dec					
Week	27	28	29	30	31	32	33	34	35	36	37	38	39	40	41	42	43	44	45	46	47	48	49	50	51	52
2017	Complete	4	6	4	9	5	2	7	2	8	7	1	2	4	3	2	2	4	3	3	1	1	3	3	2	0
	Total	59	87	94	91	91	99	163	162	165	116	159	128	158	144	90	112	152	181	182	192	114	185	169	202	
	Percent	7%	7%	4%	10%	5%	2%	4%	1%	5%	6%	1%	2%	3%	2%	2%	2%	3%	2%	2%	1%	1%	2%	2%	1%	0%
2018	Complete	2	1	9	3	4	4	4	3	2	4	4	4	5	5	5	2	2	2	2	4	0	3	7	4	
	Total	63	88	67	63	87	85	152	185	151	97	132	131	122	128	102	129	142	145	127	160	82	170	143	170	
	Percent	3%	1%	13%	5%	5%	3%	2%	1%	4%	3%	3%	4%	4%	5%	2%	1%	1%	2%	3%	0%	2%	5%	2%	2%	
2019	Complete	2	1	5	4	2	3	1	2	3	4	4	6	7	6	3	4	6	4	1	5	2	4	3	2	
	Total	61	86	80	81	84	101	120	157	137	107	136	130	123	117	77	140	154	125	148	148	188	88	172	163	
	Percent	3%	1%	6%	5%	2%	3%	1%	1%	2%	4%	3%	5%	6%	5%	4%	3%	4%	3%	1%	3%	1%	5%	2%	1%	

Weekly Measure #: 3
 Name: HPV Dose Due (All)
 Description: ALL visits with patients up-to-date for HPV vaccine (% of visits with HPV due, ages 11-17)



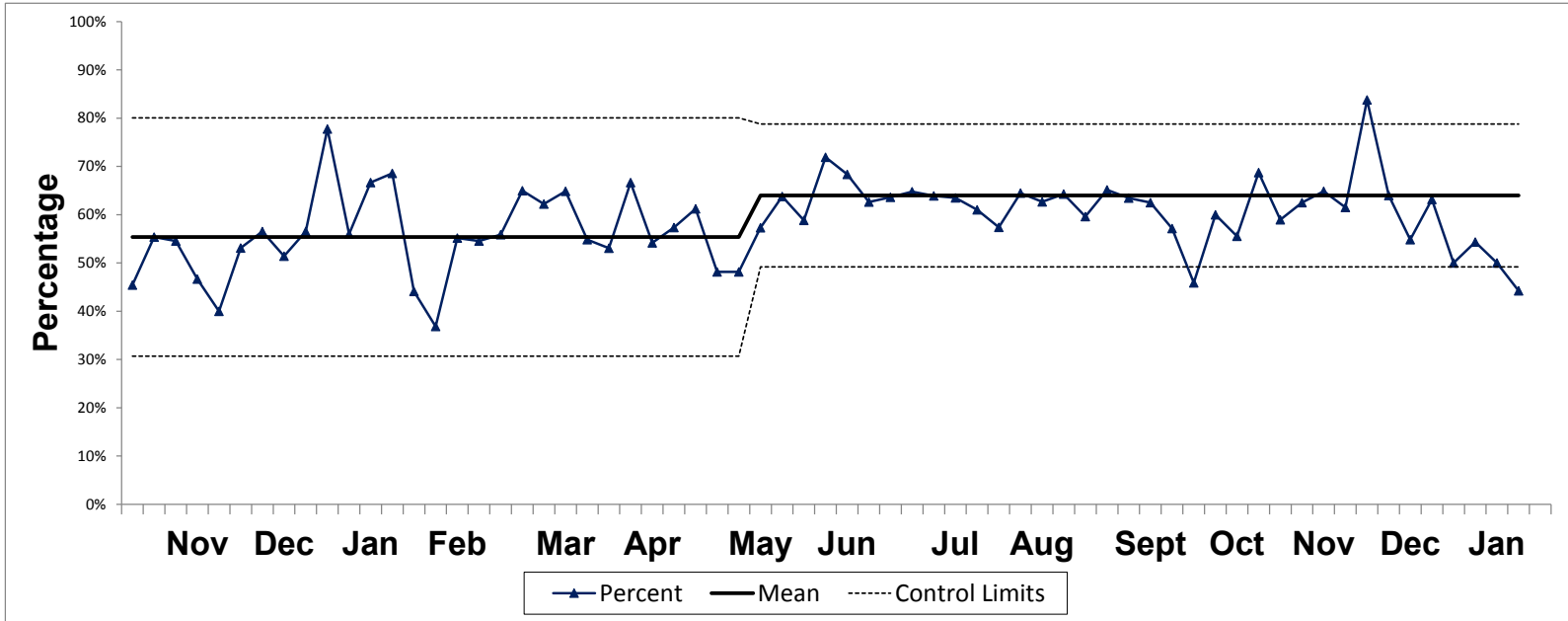
	Jan				Feb				Mar				Apr				May				Jun						
2017	Week	1	2	3	4	5	6	7	8	9	10	11	12	13	14	15	16	17	18	19	20	21	22	23	24	25	26
	Complete	24	13	35	12	15	19	20	23	14	11	12	30	28	18	31	24	24	32	31	35	31	39	48	39	54	43
	Total	144	212	250	257	273	310	334	253	232	236	256	196	236	234	220	203	224	215	251	215	179	147	161	146	161	155
	Percent	17%	6%	14%	5%	5%	6%	6%	9%	6%	5%	5%	15%	12%	8%	14%	12%	11%	15%	12%	16%	17%	27%	30%	27%	34%	28%
2018	Complete	14	13	13	22	16	18	23	24	24	18	21	27	39	42	27	28	39	34	41	44	63	39	69	64	64	52
	Total	139	169	110	214	252	318	392	278	240	209	204	197	168	207	206	155	207	200	191	206	175	135	173	171	167	143
	Percent	10%	8%	12%	10%	6%	6%	6%	9%	10%	9%	10%	14%	23%	20%	13%	18%	19%	17%	21%	21%	36%	29%	40%	37%	38%	36%
2019	Complete	15	30	33	28	17	20	18	26	22	28	33	24	40	28	34	41	41	38	28	26	52	38	52	67	69	52
	Total	108	200	249	237	266	274	259	229	227	212	206	232	176	193	208	216	197	205	198	188	182	129	178	165	169	137
	Percent	14%	15%	13%	12%	6%	7%	7%	11%	10%	13%	16%	10%	23%	15%	16%	19%	21%	19%	14%	14%	29%	29%	29%	41%	41%	38%
2020	Complete	11	27	24	27																						
	Total	100	200	212	208																						
	Percent	11%	14%	11%	13%																						

	Jul	Aug	Sep	Oct	Nov	Dec																					
2017	Week	27	28	29	30	31	32	33	34	35	36	37	38	39	40	41	42	43	44	45	46	47	48	49	50	51	52
	Complete	33	85	59	104	120	50	44	34	34	30	23	31	33	27	37	28	28	27	25	22	16	24	22	18	19	17
	Total	123	215	209	251	297	178	232	219	224	157	206	179	206	189	151	146	208	225	227	231	141	215	208	230	170	118
	Percent	27%	40%	28%	41%	40%	28%	19%	16%	15%	19%	11%	17%	16%	14%	25%	19%	13%	12%	11%	10%	11%	11%	11%	8%	11%	14%
2018	Complete	36	59	74	92	105	59	62	46	35	35	28	38	34	33	49	39	25	22	33	28	14	17	24	17	22	15
	Total	129	193	179	189	249	162	244	267	198	152	172	193	174	175	188	182	183	189	183	204	112	205	175	193	199	103
	Percent	28%	31%	41%	49%	42%	36%	25%	17%	18%	23%	16%	20%	20%	19%	26%	21%	14%	12%	18%	14%	13%	8%	14%	9%	11%	15%
2019	Complete	51	69	90	91	107	69	50	49	39	35	47	39	32	26	31	25	36	37	24	35	26	20	34	18	18	13
	Total	138	191	213	218	256	216	196	232	193	159	202	182	163	152	138	175	208	173	187	196	225	114	209	186	194	108
	Percent	37%	36%	42%	42%	42%	32%	26%	21%	20%	22%	23%	21%	20%	17%	22%	14%	17%	21%	13%	18%	12%	18%	16%	10%	9%	12%

Weekly Measure #: 4

Name: HPV Recommend-Well

Description: WELL visits with documented provider recommendation (given or refused) (% of visits with HPV due, ages 11-



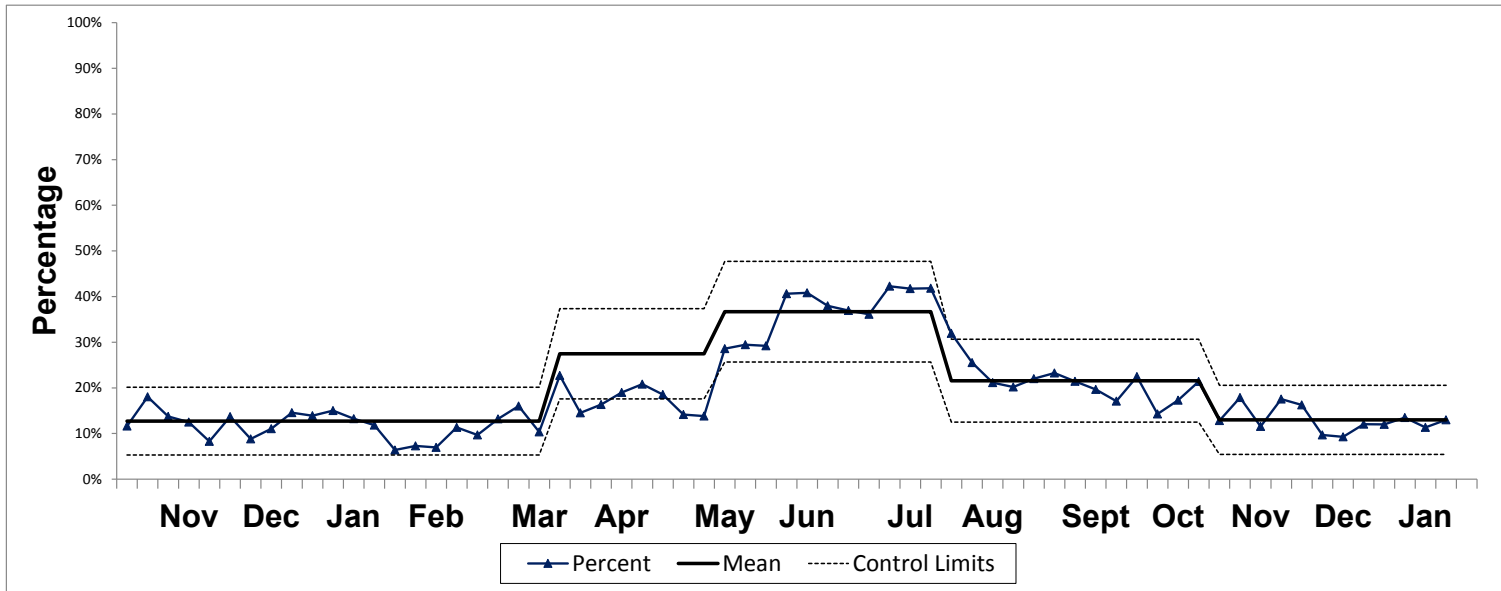
	Jan	Feb	Mar	Apr	May	Jun	Jul	Aug	Sept	Oct	Nov	Dec	Jan
2017	17	15	20	26	27	35	42	48	54	61	69	76	84
2018	12	17	22	28	32	37	43	49	55	61	67	73	80
2019	14	15	19	24	26	30	34	39	44	49	54	59	64
2020	8	16	25	34	40	45	51	57	63	68	74	80	86

	Jul	Aug	Sep	Oct	Nov	Dec
2017	29	48	56	64	72	80
2018	34	55	63	71	79	87
2019	49	66	74	82	90	98

Weekly Measure #: 5

Name: HPV Recommend-All

Description: ALL visits with documented provider recommendation (given or refused) (% of visits with HPV due, ages 11-17)



	Jan	Feb	Mar	Apr	May	Jun	Jul	Aug	Sept	Oct	Nov	Dec	Jan													
2017	1	2	3	4	5	6	7	8	9	10	11	12	13	14	15	16	17	18	19	20	21	22	23	24	25	26
Complete	24	13	35	12	15	19	20	23	14	11	12	30	28	18	31	24	24	33	31	35	31	39	48	39	54	43
Total	144	212	250	257	273	310	334	253	232	236	256	196	236	234	220	203	224	215	251	215	179	147	161	146	161	155
Percent	17%	6%	14%	5%	5%	6%	6%	9%	6%	5%	5%	15%	12%	8%	14%	12%	11%	15%	12%	16%	17%	27%	30%	27%	34%	28%
2018	14	13	13	22	16	18	23	24	24	18	21	27	39	42	27	28	39	34	41	44	63	39	64	64	52	
Total	139	169	110	214	252	318	392	278	240	209	204	197	168	207	206	155	207	200	191	206	175	135	173	171	167	143
Percent	10%	8%	12%	10%	6%	6%	6%	9%	10%	9%	10%	14%	23%	20%	13%	18%	19%	17%	21%	21%	36%	29%	40%	37%	38%	36%
2019	15	30	33	28	17	20	18	26	22	28	33	24	40	28	34	41	41	38	28	26	52	38	52	67	69	52
Total	108	200	249	237	266	274	259	229	227	212	206	232	176	193	208	216	197	205	198	188	182	129	178	165	169	137
Percent	14%	15%	13%	12%	6%	7%	7%	11%	10%	13%	16%	10%	23%	15%	16%	19%	21%	19%	14%	14%	29%	29%	29%	41%	41%	38%
2020	12	27	24	27																						
Complete	12	27	24	27																						
Total	100	200	212	208																						
Percent	12%	14%	11%	13%																						

	Jul	Aug	Sep	Oct	Nov	Dec																				
2017	27	28	29	30	31	32	33	34	35	36	37	38	39	40	41	42	43	44	45	46	47	48	49	50	51	52
Complete	33	85	60	104	120	50	44	34	34	30	23	31	33	27	37	28	29	27	25	22	16	24	22	18	19	17
Total	123	215	209	251	297	178	232	219	224	157	206	179	206	189	151	146	208	225	227	231	141	215	208	230	170	118
Percent	27%	40%	29%	41%	40%	28%	19%	16%	15%	19%	11%	17%	16%	14%	25%	19%	14%	12%	11%	10%	11%	11%	8%	11%	14%	
2018	36	59	74	92	105	59	62	46	35	35	28	38	34	33	49	39	25	22	33	28	14	17	24	17	22	15
Total	129	193	179	189	249	162	244	267	198	152	172	193	174	175	188	182	183	189	183	204	112	205	175	193	199	103
Percent	28%	31%	41%	49%	42%	36%	25%	17%	18%	23%	16%	20%	20%	19%	26%	21%	14%	12%	18%	14%	13%	8%	14%	9%	11%	15%
2019	51	69	90	91	107	69	50	49	39	35	47	39	32	26	31	25	36	37	24	35	26	20	34	18	18	13
Total	138	191	213	218	256	216	196	232	193	159	202	182	163	152	138	175	208	173	187	196	225	114	209	186	194	108
Percent	37%	36%	42%	42%	42%	32%	26%	21%	20%	22%	23%	21%	20%	17%	22%	14%	17%	21%	13%	18%	12%	18%	16%	10%	9%	12%

