



HPV Vaccine Quality Improvement Study Quarterly Data & Feedback Report

Practice ID:	18		
Baseline Period:	Feb 2017-Jan 2018	Date of Data Pull:	2/21/2020
MOC Project Periods:	Feb 2018-Jan 2019	Data through:	2020 Week 6

This Data and Feedback Report complements the weekly run chart data reports you receive from VHealth.

In this report, we present your data in the form of control charts, which allow us to apply some statistical rules to determine whether or not movements in the data over time represent real shifts in the outcome measures, rather than just random variation.

We have included a written summary interpreting each measure for you -- what we see, what it could mean, and recommended actions for your consideration.

Data Summary & Feedback

Report Period: Nov 2019 - Jan 2020

1st MOC Project Change Options: B - Patient Education Materials, E - Reminders - Due/Overdue Vaccines

2nd MOC Project Change Options: C - Provider Prompts, G - Vaccines in Non-Well Visits

Summary Measure #1: 1+ Dose (Initiation) Among entire active patient population		
What we see	What it could mean	Recommended actions
Baseline and all quarters are higher than TN and US percentages for the 13-17 age group. There is a drop in Y1Q4 for both age groups, and for the 11-17 age group, drops in Y2Q1, and Y2Q4. <i>Note: both the TN and US rates for 2018 are higher than the 2017 rates.</i>	Your practice has a strong foundation of effective processes in place for initiating the vaccine.	Continue to include data review as a standing agenda item in meetings. Investigate potential reasons for the drop in the 4th quarter. Remind providers and staff of the adopted workflows.
For ages 11-17, there is a 11.2 percentage point increase from baseline to end of Y2Q4 For ages 13-17, an increase of 12.9 percentage points.	The upward trend flattened slightly in Y1Q4, but subsequent quarters show increases.	Discuss with your providers potential causes for the drop off in Y1Q4. Address any obstacles to continued improvement.
Summary Measure #2: All Doses (Complete) Among entire active patient population		
What we see	What it could mean	Recommended actions
Baseline and all quarter rates for the 13-17 age group are higher than the TN and US percentages. There is a slight drop in Y2Q1 for the 11-17 age group. <i>Note: both the TN and US rates for 2018 are higher than the 2017 rates.</i>	You have a some effective processes in place for completing the HPV vaccine series, especially in the 13-17 age group.	Revisit adopted workflows for all four changes as a reminder for entire practice. Continue to monitor over time.
For ages 11-17, there is a 12.7 percentage point increase from baseline to end of Y2Q4. For ages 13-17, an increase of 14.5 percentage points.	There was a drop in Y2Q1 for the 11-17 age group.	Revisit adopted workflows for all four changes as a reminder for entire practice. Continue to monitor over time.
Weekly Measure #1: HPV Dose Due (Well)		
<i>WELL visits with patients up-to-date for HPV vaccine (% of visits with HPV due, ages 11-17)</i>		
What we see	What it could mean	Recommended actions
Baseline mean (average): 63% of patients who were due received an HPV vaccine dose during well visits. The mean remains the same through January 2020.	Integrating patient education materials, reminders for due/overdue vaccines and provider prompts are not having a sustained impact.	Review use of patient education materials, workflows for reminders for due/overdue vaccines and provider prompts to determine if any adjustments are needed.
Weekly Measure #2: HPV Dose Due (Non-Well)		
<i>NON-WELL visits with patients up-to-date for HPV vaccine (% of visits with HPV due, ages 11-17)</i>		
What we see	What it could mean	Recommended actions
The mean remains at 6% through January 2020.	Your implementation of offering the vaccine in non-well visits had an initial, small impact (Mean increased from 4% to 6% in November 2018.)	Review your PDSA plan for offering the vaccine in non-well visits. Identify obstacles for providers and adjust your workflows to address the obstacles. Implement the revised PDSA cycle.

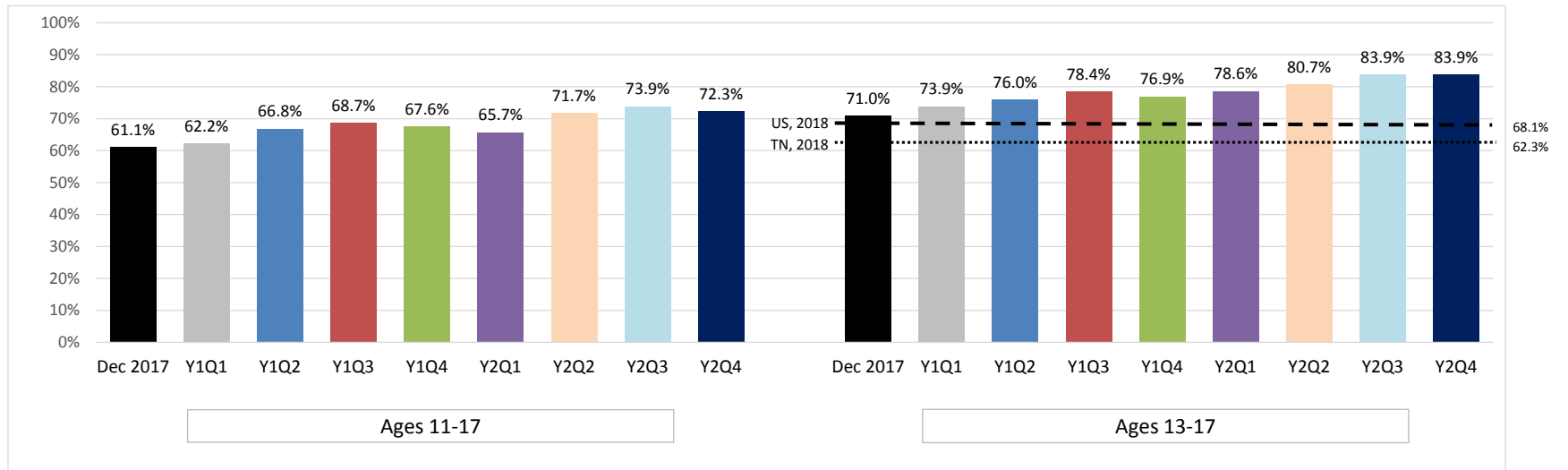
Data Summary & Feedback

Report Period: Nov 2019 - Jan 2020

Weekly Measure #3: HPV Dose Due (All)		
<i>ALL visits with patients up-to-date for HPV vaccine (% of visits with HPV due, ages 11-17)</i>		
What we see	What it could mean	Recommended actions
The baseline mean of 26% dropped to 18% in Nov 2018 and increased to 53% in April 2019, then dropped back to 25% in October 2019. This measure is a combination of Weekly Measure #1 and #2.	Increases during the summer months is a common seasonal pattern.	Continue to offer the vaccine during non-well visits. Identify obstacles for providers and adjust your workflows to address the obstacles. Implement the revised PDSA cycle.
Weekly Measure #4: HPV Recommend-Well		
<i>WELL visits with documented provider recommendation (given or refused) (% of visits with HPV due, ages 11-17)</i>		
What we see	What it could mean	Recommended actions
This measure shows provider recommendation in well visits, counted as vaccines given plus vaccines refused (if documented). The mean increased from 63% to 84% in June 2018 and remains the same through January 2020.	Providers are documenting approximately 21% of refusals during well visits using the codes provided.	Review the data with providers. Identify reasons documenting has been successful in well visits and possible ways to continue to improve. Consider reviewing patients who did not receive the vaccine and don't have a documented refusal to identify if the vaccine was offered or refused.
Weekly Measure #5: HPV Recommend-All		
<i>ALL visits with documented provider recommendation (given or refused) (% of visits with HPV due, ages 11-17)</i>		
What we see	What it could mean	Recommended actions
This measure shows provider recommendation in ALL visits, counted as vaccines given plus vaccines refused (if documented). The mean of 62%, dropped to 22%, increased to 63% in May, and dropped to 34% in October 2019.	The upward shift in spring/summer months is a common seasonal effect.	Consider reviewing patients who did not receive the vaccine and don't have a documented refusal to identify if the vaccine was offered or refused.
Weekly Measure #6: Bundle Adol Vax		
<i>Visits for ages 11-12 year-olds in which HPV & meningococcal vaccines are bundled with Tdap, when due (% of visits, ages 11-12)</i>		
What we see	What it could mean	Recommended actions
The mean remains at 87% through January 2020.	Implementation of vaccine communication strategies and patient education materials resulted in a sustained improvement in bundled adolescent vaccines.	Review the data with providers. Discuss obstacles to bundling for all 11-12 year old visits and identify ways to minimize or eliminate them. Review use of patient education materials, including hesitant parent materials.

Summary Measure: 1+ Dose (Initiation)

Note: US and TN data were updated for 2018

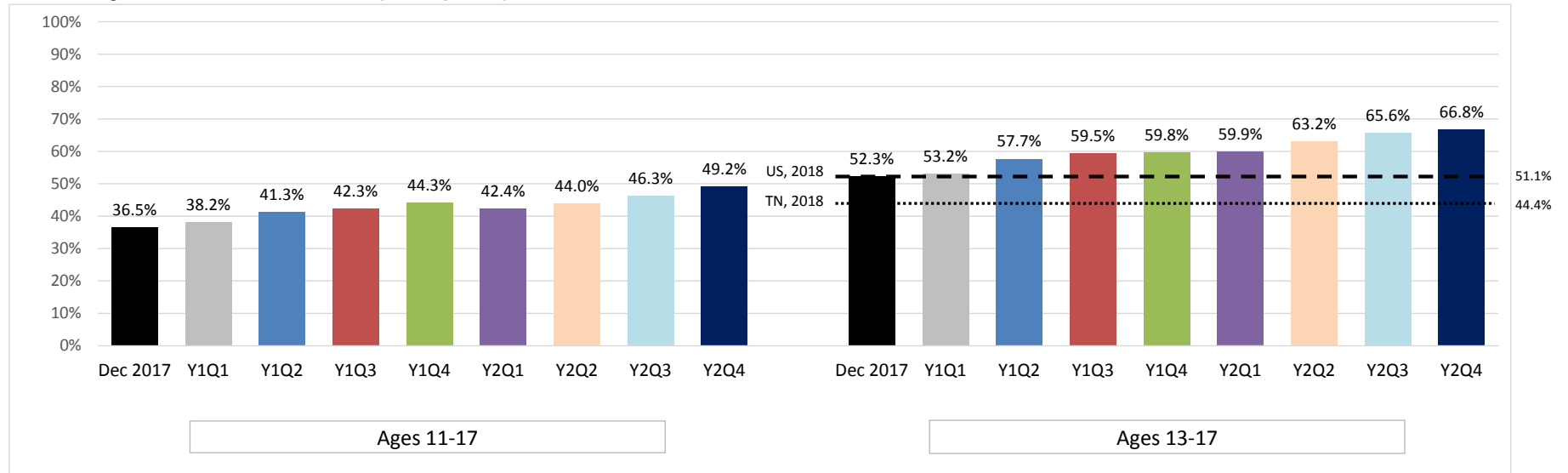


Notes: Rates are for males and females combined.
Practice rates calculated on all active patients (at least one visit in past three years), ages 11-17 or ages 13-17, as indicated.

	Baseline			First MOC Project						Second MOC Project						Maintenance Period											
	Dec 2017			Y1Q1			Y1Q2			Y1Q3			Y1Q4			Y2Q1			Y2Q2			Y2Q3			Y2Q4		
	#	Total	%	#	Total	%	#	Total	%	#	Total	%	#	Total	%	#	Total	%	#	Total	%	#	Total	%	#	Total	%
Ages 11-17	335	548	61%	358	576	62%	395	591	67%	431	627	69%	444	657	68%	483	735	66%	543	757	72%	594	804	74%	586	811	72%
Ages 13-17	235	331	71%	257	348	74%	275	362	76%	298	380	78%	310	403	77%	353	449	79%	373	462	81%	405	483	84%	422	503	84%

Summary Measure: All Doses (Complete)

Note: US and TN data were updated for 2018

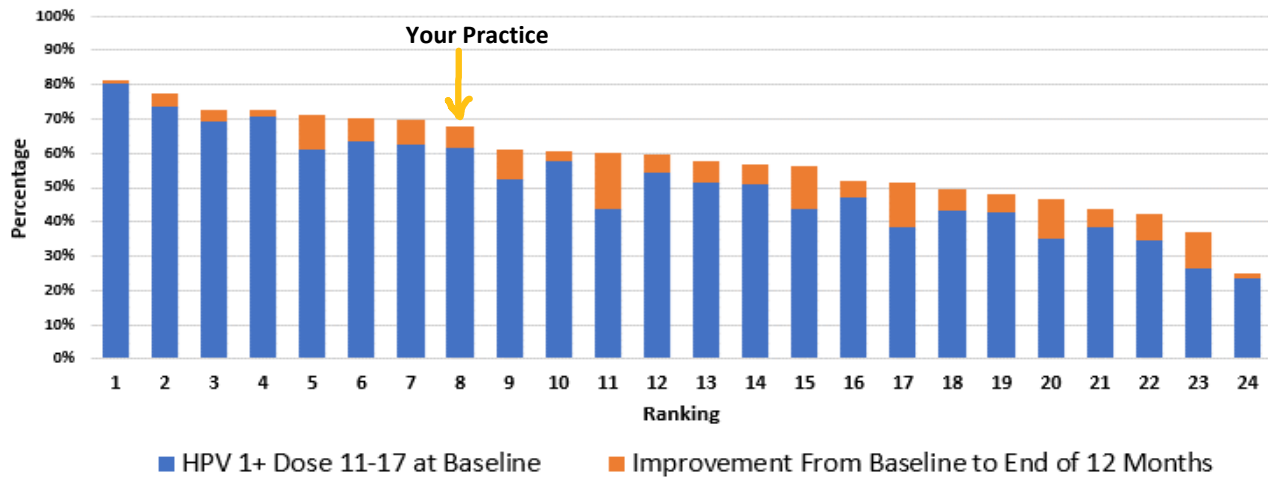


Notes: Rates are for males and females combined.
Practice rates calculated on all active patients (at least one visit in past three years), ages 11-17 or ages 13-17, as indicated.

	Baseline			First MOC Project			Second MOC Project			Maintenance Period																	
	Dec 2017			Y1Q1			Y1Q2			Y1Q3			Y1Q4			Y2Q1			Y2Q2			Y2Q3			Y2Q4		
	#	Total	%	#	Total	%	#	Total	%	#	Total	%	#	Total	%	#	Total	%	#	Total	%	#	Total	%	#	Total	%
Ages 11-17	200	548	36%	220	576	38%	244	591	41%	265	627	42%	291	657	44%	312	735	42%	333	757	44%	372	804	46%	399	811	49%
Ages 13-17	173	331	52%	185	348	53%	209	362	58%	226	380	59%	241	403	60%	269	449	60%	292	462	63%	317	483	66%	336	503	67%

Measure: HPV 1+ Dose 11-17 yo

Description: Ranking of HPV vaccine initiation of all active patients ages 11-17 (%) among study sites



Your practice ranked **8th** in **initiating** the HPV vaccine series among patients ages 11-17.

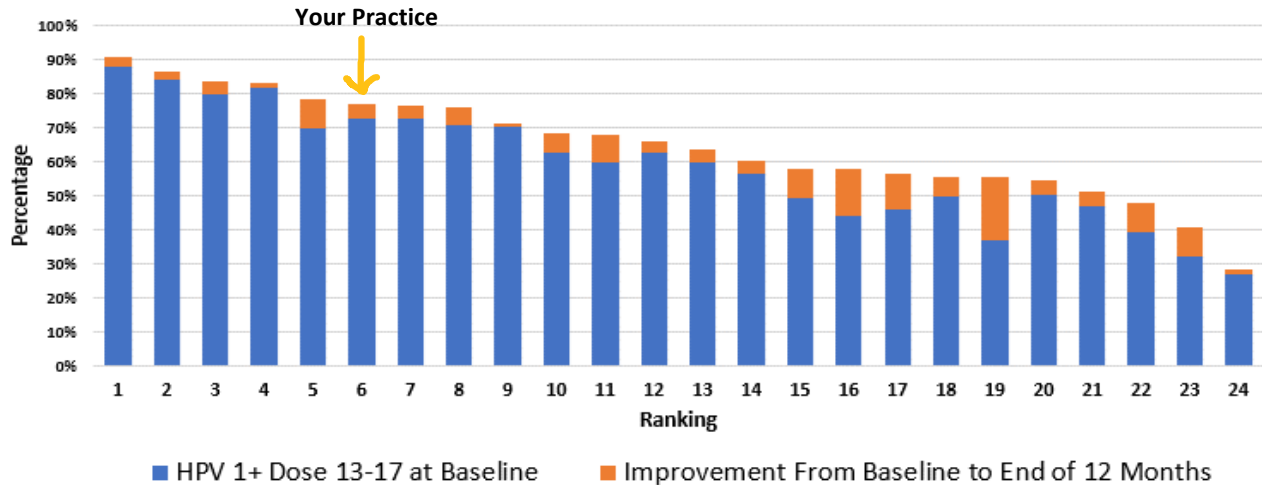
Baseline: 61.6% (Jan 2018).

End of 12 months: 67.6% (Jan 2019).

Improvement: 6.0 percentage point increase in 12 months.

Measure: HPV 1+ Dose 13-17 yo

Description: Ranking of HPV vaccine initiation of all active patients ages 13-17 (%) among study sites



Your practice ranked **6th** in **initiating** the HPV vaccine series among patients ages 13-17.

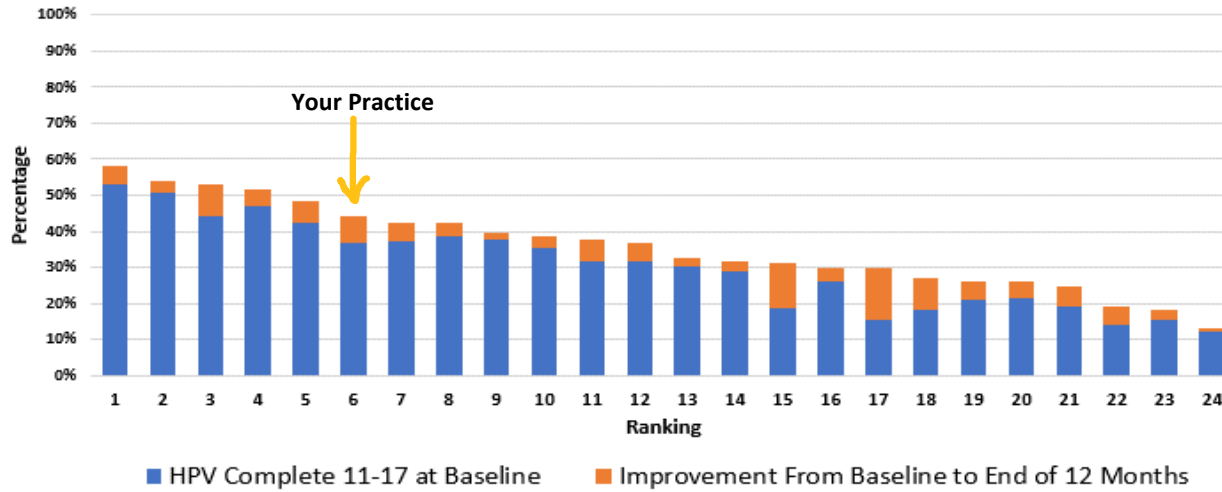
Baseline: 72.8% (Jan 2018).

End of 12 months: 76.9% (Jan 2019).

Improvement: 4.1 percentage point increase in 12 months.

Measure: HPV Complete 11-17 yo

Description: Ranking of HPV vaccine completion of all active patients ages 11-17 (%) among study sites



Your practice ranked **6th** in **completing** the HPV vaccine series among patients ages 11-17.

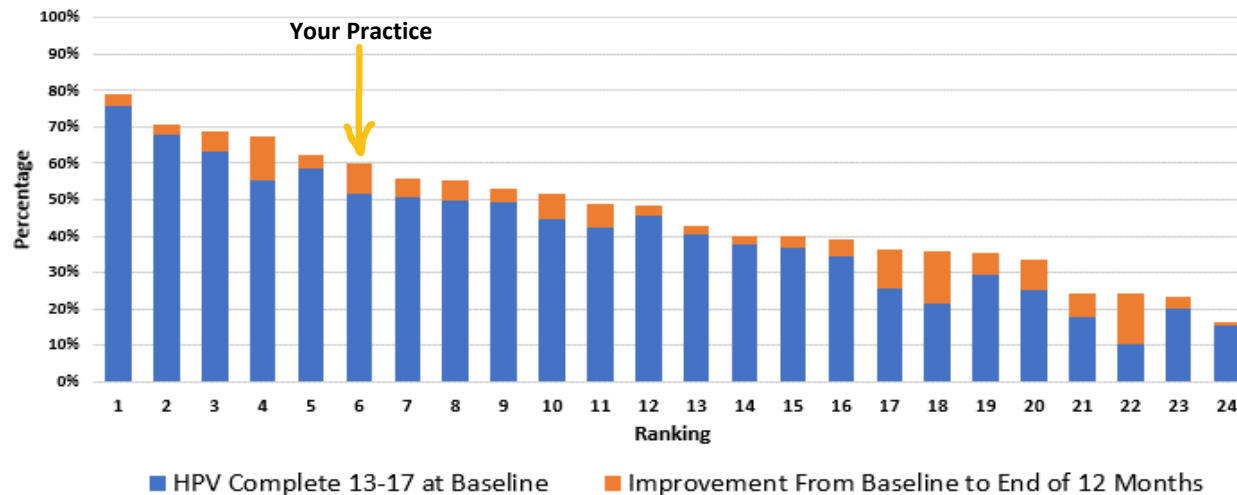
Baseline: 36.6% (Jan 2018).

End of 12 months: 44.3% (Jan 2019).

Improvement: 7.7 percentage point increase in 12 months.

Measure: HPV Complete 13-17 yo

Description: Ranking of HPV vaccine completion of all active patients ages 13-17 (%) among study sites



Your practice ranked **6th** in **completing** the HPV vaccine series among patients ages 13-17.

Baseline: 51.8% (Jan 2018).

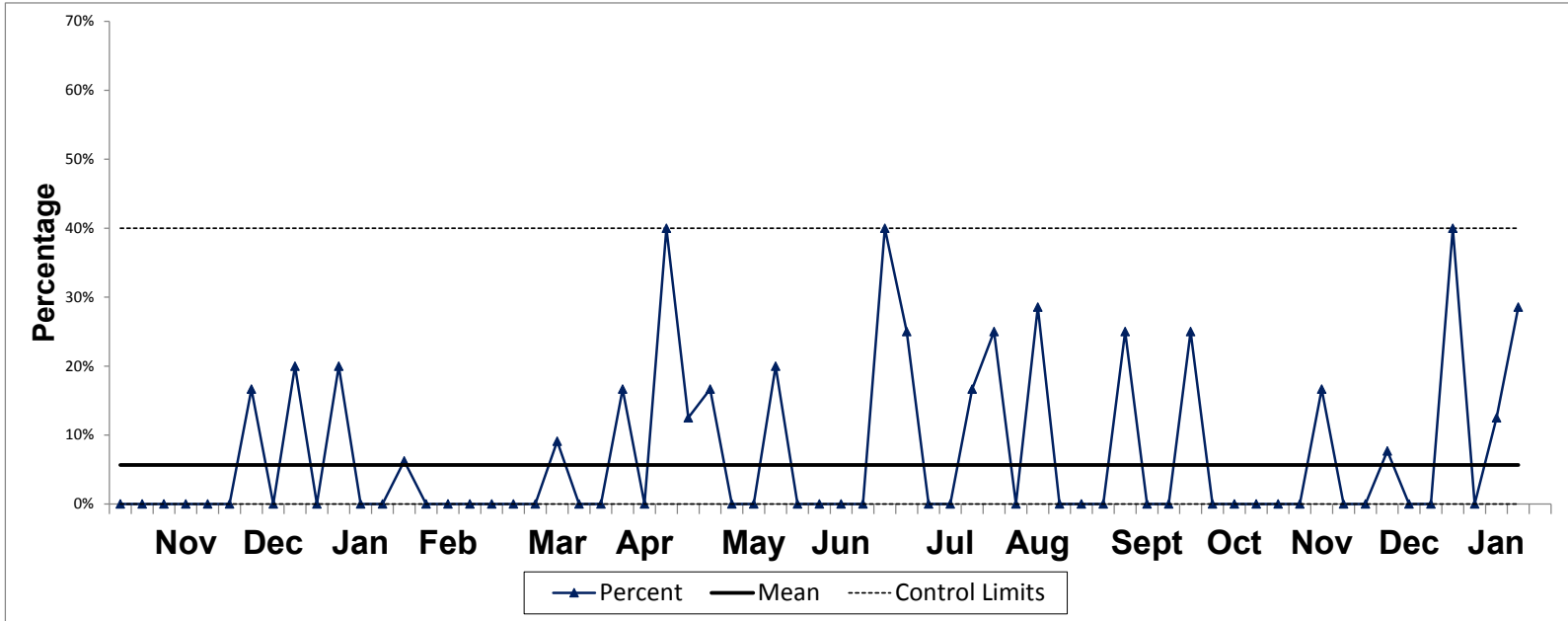
End of 12 months: 59.8% (Jan 2019).

Improvement: 8.0 percentage point increase in 12 months.

Weekly Measure #: 2

Name: HPV Dose (Non-Well)

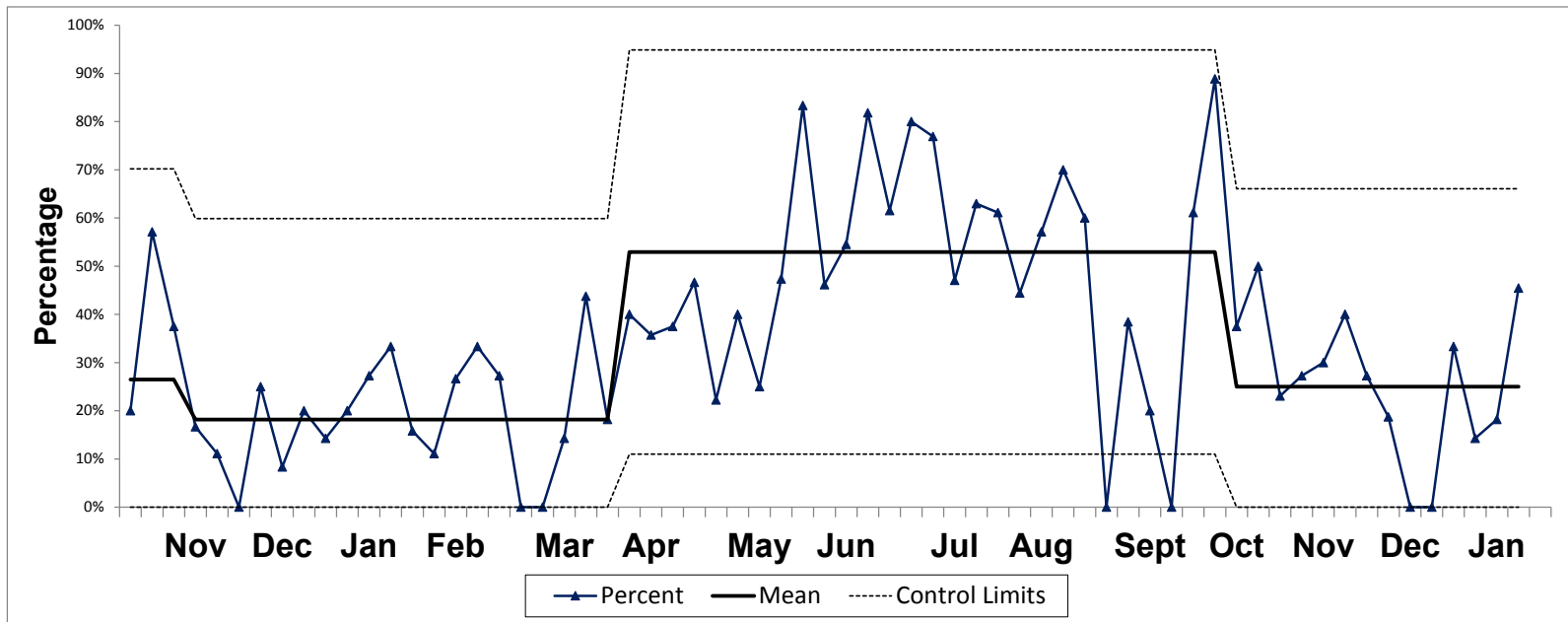
Description: NON-WELL clinic visits with patients up-to-date for HPV vaccine (% of visits with HPV due, ages 11-17)



	Jan	2	3	4	Feb	5	6	7	8	Mar	9	10	11	12	13	Apr	14	15	16	17	18	19	20	21	22	Jun	23	24	25	26
2017	0	0	0	1	0	0	0	0	0	0	0	0	0	0	1	0	0	0	0	0	0	0	1	0	0	1	0	0	0	0
Total	4	7	8	12	12	12	9	13	5	4	5	8	7	7	8	7	8	7	8	6	8	4	3	1	2	4	4	4	0	
Percent	0%	0%	0%	8%	0%	0%	0%	0%	0%	0%	0%	0%	0%	0%	14%	0%	0%	0%	0%	0%	0%	0%	25%	0%	0%	50%	0%	0%	0%	0%
2018	0	0	0	0	1	0	0	1	0	0	0	0	1	1	1	1	0	0	0	1	0	0	0	0	0	0	0	0	0	0
Total	2	4	2	3	10	12	21	10	4	6	10	11	7	10	10	12	11	12	7	6	2	3	4	1	5	1	5	1	1	
Percent	0%	0%	0%	0%	10%	0%	0%	10%	0%	0%	0%	9%	14%	10%	0%	0%	9%	0%	0%	9%	0%	0%	0%	0%	0%	0%	0%	0%	0%	0%
2019	0	1	0	0	1	0	0	0	0	0	0	1	0	0	2	0	2	1	1	0	0	1	0	0	1	0	0	0	0	
Total	6	5	4	6	16	15	10	6	7	0	5	11	4	8	12	8	5	8	6	6	3	5	1	4	5	2	4	5	2	
Percent	0%	20%	0%	0%	6%	0%	0%	0%	0%	0%	0%	9%	0%	0%	17%	0%	40%	13%	17%	0%	0%	20%	0%	0%	0%	0%	0%	0%	0%	
2020	2	0	1	2																										
Total	5	11	8	7																										
Percent	40%	0%	13%	29%																										

	Jul	27	28	29	30	Aug	31	32	33	34	35	Sep	36	37	38	39	Oct	40	41	42	43	Nov	44	45	46	47	48	Dec	49	50	51	52
2017	0	0	0	0	1	0	0	0	0	0	0	0	0	0	0	0	0	0	1	0	1	0	0	0	0	0	0	0	0	0		
Total	3	4	4	5	7	4	4	3	7	5	3	7	7	4	2	6	5	6	5	8	3	9	5	8	3	9	5	8	6			
Percent	0%	0%	0%	0%	14%	0%	0%	0%	0%	0%	0%	0%	0%	0%	0%	0%	0%	0%	17%	0%	17%	0%	0%	0%	0%	0%	0%	0%	0%			
2018	0	0	1	2	0	0	0	0	0	1	0	1	0	0	2	2	0	0	0	0	0	0	0	0	0	0	1	0	1			
Total	3	4	2	3	0	4	5	7	4	7	7	6	2	2	8	8	5	7	1	5	4	8	5	6	9	5	6	9	5			
Percent	0%	0%	50%	67%	0%	0%	0%	0%	0%	14%	0%	17%	0%	0%	25%	25%	0%	0%	0%	0%	0%	0%	0%	0%	0%	17%	0%	20%				
2019	2	1	0	0	1	1	0	2	0	0	0	2	0	0	1	0	0	0	0	0	0	0	0	1	0	0	1	0	0			
Total	5	4	2	4	6	4	8	7	1	2	0	8	7	3	4	1	4	4	7	6	6	3	7	13	9	5	9	5				
Percent	40%	25%	0%	0%	17%	25%	0%	29%	0%	0%	0%	25%	0%	0%	25%	0%	0%	0%	0%	0%	0%	0%	17%	0%	0%	8%	0%	0%				

Weekly Measure #: 3
Name: HPV Dose Due (All)
Description: ALL visits with patients up-to-date for HPV vaccine (% of visits with HPV due, ages 11-17)



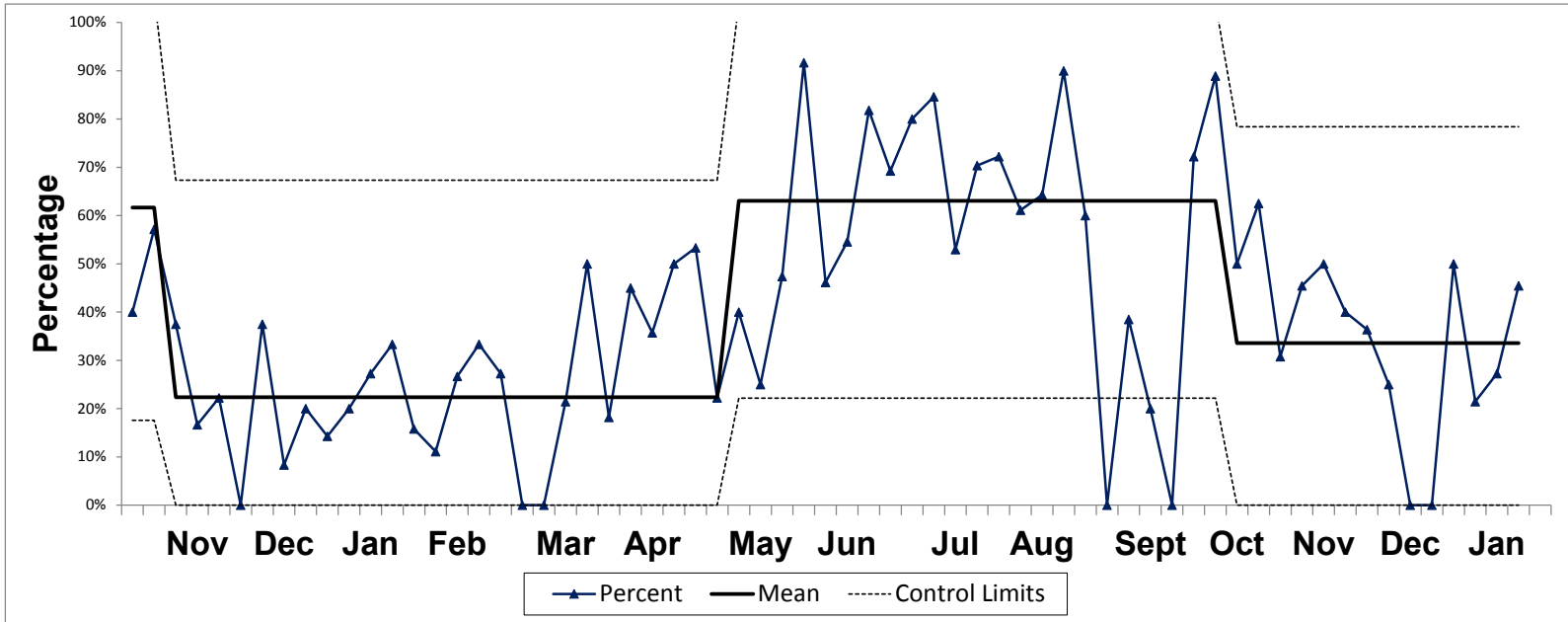
	Jan				Feb				Mar					Apr				May					Jun				
2017	Week	1	2	3	4	5	6	7	8	9	10	11	12	13	14	15	16	17	18	19	20	21	22	23	24	25	26
	Complete	0	3	2	5	4	1	0	1	3	3	1	1	3	1	0	1	0	1	0	2	3	4	5	4	2	2
	Total	4	12	13	18	18	16	9	19	10	7	6	10	9	8	8	8	8	9	8	6	10	5	7	10	6	3
	Percent	0%	25%	15%	28%	22%	6%	0%	5%	30%	43%	17%	10%	33%	13%	0%	13%	0%	11%	0%	33%	30%	80%	71%	40%	33%	67%
2018	Complete	2	1	2	1	5	3	1	4	2	0	0	3	7	6	2	0	6	7	6	4	7	5	1	5	2	4
	Total	6	6	4	4	15	16	22	14	8	6	11	15	14	16	12	14	19	24	14	12	12	11	7	6	9	5
	Percent	33%	17%	50%	25%	33%	19%	5%	29%	25%	0%	0%	20%	50%	38%	17%	0%	32%	29%	43%	33%	58%	45%	14%	83%	22%	80%
2019	Complete	1	1	3	3	3	2	4	3	3	0	0	2	7	2	8	5	3	7	2	4	1	9	10	6	6	9
	Total	7	5	11	9	19	18	15	9	11	0	5	14	16	11	20	14	8	15	9	10	4	19	12	13	11	11
	Percent	14%	20%	27%	33%	16%	11%	27%	33%	27%	0%	0%	14%	44%	18%	40%	36%	38%	47%	22%	40%	25%	47%	83%	46%	55%	82%
2020	Complete	2	2	2	5																						
	Total	6	14	11	11																						
	Percent	33%	14%	18%	45%																						

	Jul				Aug				Sep				Oct				Nov				Dec						
2017	Week	27	28	29	30	31	32	33	34	35	36	37	38	39	40	41	42	43	44	45	46	47	48	49	50	51	52
	Complete	1	3	6	11	19	5	2	3	3	0	4	0	2	4	3	1	0	2	0	2	0	1	2	1	1	2
	Total	6	10	18	22	33	16	6	6	11	6	8	7	9	8	6	6	6	8	6	10	4	10	11	6	9	8
	Percent	17%	30%	33%	50%	58%	31%	33%	50%	27%	0%	50%	0%	22%	50%	50%	17%	0%	25%	0%	20%	0%	10%	18%	17%	11%	25%
2018	Complete	2	3	6	15	11	8	1	8	4	2	2	2	0	6	6	3	1	2	4	3	1	1	0	2	1	1
	Total	9	9	9	18	21	17	6	19	11	9	12	13	2	9	16	11	8	10	7	8	6	9	5	8	12	5
	Percent	22%	33%	67%	83%	52%	47%	17%	42%	36%	22%	17%	15%	0%	67%	38%	27%	13%	20%	57%	38%	17%	11%	0%	25%	8%	20%
2019	Complete	8	12	10	8	17	11	8	8	7	3	0	5	2	0	11	8	3	4	3	3	3	2	3	3	0	0
	Total	13	15	13	17	27	18	18	14	10	5	0	13	10	5	18	9	8	8	13	11	10	5	11	16	11	5
	Percent	62%	80%	77%	47%	63%	61%	44%	57%	70%	60%	0%	38%	20%	0%	61%	89%	38%	50%	23%	27%	30%	40%	27%	19%	0%	0%

Weekly Measure #: 5

Name: HPV Recommend-All

Description: ALL visits with documented provider recommendation (given or refused) (% of visits with HPV due, ages 11-11)



	Jan				Feb				Mar					Apr				May					Jun				
Week	1	2	3	4	5	6	7	8	9	10	11	12	13	14	15	16	17	18	19	20	21	22	23	24	25	26	
2017	Complete	0	3	2	5	4	1	0	1	3	3	1	1	3	1	0	1	0	1	0	2	3	4	5	4	2	2
	Total	4	12	13	18	18	16	9	19	10	7	6	10	9	8	8	8	8	9	8	6	10	5	7	10	6	3
	Percent	0%	25%	15%	28%	22%	6%	0%	5%	30%	43%	17%	10%	33%	13%	0%	13%	0%	11%	0%	33%	30%	80%	71%	40%	33%	67%
2018	Complete	2	1	2	1	5	3	1	4	2	0	0	3	7	6	2	0	7	9	6	4	7	5	1	5	3	4
	Total	6	6	4	4	15	16	22	14	8	6	11	15	14	16	12	14	19	24	14	12	12	11	7	6	9	5
	Percent	33%	17%	50%	25%	33%	19%	5%	29%	25%	0%	0%	20%	50%	38%	17%	0%	37%	38%	43%	33%	58%	45%	14%	83%	33%	80%
2019	Complete	1	1	3	3	3	2	4	3	3	0	0	3	8	2	9	5	4	8	2	4	1	9	11	6	6	9
	Total	7	5	11	9	19	18	15	9	11	0	5	14	16	11	20	14	8	15	9	10	4	19	12	13	11	11
	Percent	14%	20%	27%	33%	16%	11%	27%	33%	27%	0%	0%	21%	50%	18%	45%	36%	50%	53%	22%	40%	25%	47%	92%	46%	55%	82%
2020	Complete	3	3	3	5																						
	Total	6	14	11	11																						
	Percent	50%	21%	27%	45%																						

	Jul				Aug				Sep				Oct				Nov				Dec						
Week	27	28	29	30	31	32	33	34	35	36	37	38	39	40	41	42	43	44	45	46	47	48	49	50	51	52	
2017	Complete	1	3	6	11	19	5	2	3	3	0	4	0	2	4	3	1	0	2	0	2	0	1	2	1	1	2
	Total	6	10	18	22	33	16	6	6	11	6	8	7	9	8	6	6	6	10	4	10	11	6	9	8		
	Percent	17%	30%	33%	50%	58%	31%	33%	50%	27%	0%	50%	0%	22%	50%	50%	17%	0%	25%	0%	20%	0%	10%	18%	17%	11%	25%
2018	Complete	4	5	8	18	18	13	3	12	5	3	6	6	0	7	6	7	2	4	4	3	1	2	0	3	1	1
	Total	9	9	9	18	21	17	6	19	11	9	12	13	2	9	16	11	8	10	7	8	6	9	5	8	12	5
	Percent	44%	56%	89%	100%	86%	76%	50%	63%	45%	33%	50%	46%	0%	78%	38%	64%	25%	40%	57%	38%	17%	22%	0%	38%	8%	20%
2019	Complete	9	12	11	9	19	13	11	9	9	3	0	5	2	0	13	8	4	5	4	5	5	2	4	4	0	0
	Total	13	15	13	17	27	18	18	14	10	5	0	13	10	5	18	9	8	8	13	11	10	5	11	16	11	5
	Percent	69%	80%	85%	53%	70%	72%	61%	64%	90%	60%	0%	38%	20%	0%	72%	89%	50%	63%	31%	45%	50%	40%	36%	25%	0%	0%

