



HPV Vaccine Quality Improvement Study Quarterly Data & Feedback Report

Practice ID:	14		
Baseline Period:	Jan-Dec 2017	Date of Data Pull:	2/2/2020
MOC Project Periods:	Jan-Dec 2018	Data through:	2020 Week 2

This Data and Feedback Report complements the weekly run chart data reports you receive from VHealth.

In this report, we present your data in the form of control charts, which allow us to apply some statistical rules to determine whether or not movements in the data over time represent real shifts in the outcome measures rather than just random variation.

We have included a written summary interpreting each measure for you -- what we see, what it could mean, and recommended actions for your consideration.

Data Summary & Feedback

Report Period: October - December 2019

1st MOC Project Change Options: A – Bundling Adolescent Vaccines, B – Patient Education Materials

2nd MOC Project Change Options: E – Remind Parents of Due/Overdue Vaccines, F – Remind Parents of Due/Overdue Well Visits

Summary Measure #1: 1+ Dose (Initiation) Among entire active patient population		
What we see	What it could mean	Recommended actions
<p>Baseline and all quarters through Y2Q4 are higher than TN and US percentages for the 13-17 age group. <i>Note: both the TN and US rates for 2018 are higher than the 2017 rates.</i></p> <p>For ages 11-17, there is a 11.9 percentage point increase from baseline to end of Y2Q4. For ages 13-17, an increase of 10.8 percentage points.</p>	<p>Your practice has a strong foundation of effective processes in place for initiating the vaccine and has continued to improve these processes over time.</p> <p>Your practice has made good progress with initiating the vaccine series.</p>	<p>Continue to include data review as a standing agenda item in meetings. As necessary, remind providers and staff of the adopted workflows to continue your improvement trend.</p> <p>Continue to monitor over time to hold your gains and continue to improve.</p>
Summary Measure #2: All Doses (Complete) Among entire active patient population		
What we see	What it could mean	Recommended actions
<p>Baseline and all quarters through Y2Q2 are higher than TN rates for the 13-17 age group. Y1Q2 through Y2Q4 are higher than both US and TN rates. <i>Note: both the TN and US rates for 2018 are higher than the 2017 rates.</i></p> <p>For ages 11-17, there is a 10.1 percentage point increase from baseline to end of Y2Q4. For ages 13-17, an increase of 11.6 percentage points.</p>	<p>Your practice is making progress on completion of the vaccine series, with opportunities to continue to improve.</p> <p>There is good progress in completion rates with opportunity for additional improvement.</p>	<p>Review best practices for HPV vaccine communication with all providers, including communication strategies for hesitant parents.</p> <p>Continue to monitor over time to hold your gains and continue to improve.</p>
Weekly Measure #1: HPV Dose Due (Well)		
<i>WELL visits with patients up-to-date for HPV vaccine (% of visits with HPV due, ages 11-17)</i>		
What we see	What it could mean	Recommended actions
<p>The mean of 81% dropped to 67% in August and increased to 76% in April 2019. The mean remains at 76% through December 2019.</p>	<p>The April shift up may be a result of increased well visits during the spring/summer months.</p>	<p>Review the data with providers and review adopted workflows for reminders for due/overdue vaccines and well visits. Discuss additional change ideas to test to continue to improve.</p>
Weekly Measure #2: HPV Dose Due (Non-Well)		
<i>NON-WELL visits with patients up-to-date for HPV vaccine (% of visits with HPV due, ages 11-17)</i>		
What we see	What it could mean	Recommended actions
<p>Baseline mean (average): 2%. No change from baseline period.</p>	<p>Your practice did not choose this as one of your change options, so no change was expected.</p>	<p>Consider offering the HPV vaccine during non-well visits on a regular basis as an option for providing greater coverage.</p>
Weekly Measure #3: HPV Dose Due (All)		

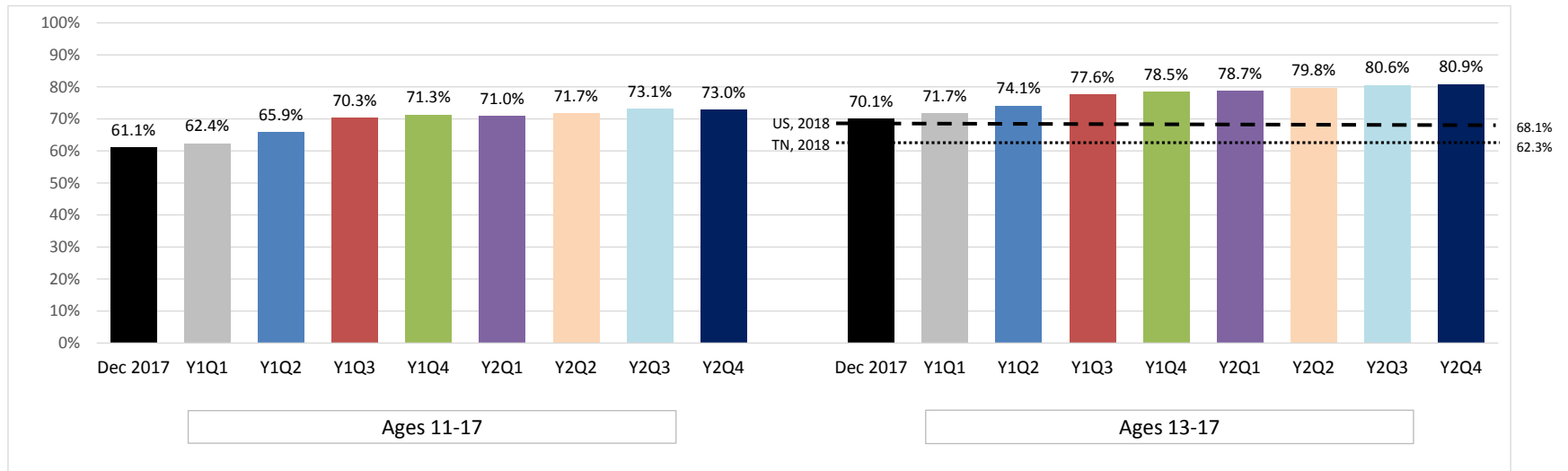
Data Summary & Feedback

Report Period: October - December 2019

<i>ALL visits with patients up-to-date for HPV vaccine (% of visits with HPV due, ages 11-17)</i>		
What we see	What it could mean	Recommended actions
Mean (average) dropped from 46% to 32% in August 2018, then increased during the spring/summer months, fluctuating seasonally through December 2019. This measure is the combination of Measures #1 and #2.	The increases during the summer months is a common seasonal pattern.	Continue to monitor over time.
Weekly Measure #4: HPV Recommend-Well		
<i>WELL visits with documented provider recommendation (given or refused) (% of visits with HPV due, ages 11-17)</i>		
What we see	What it could mean	Recommended actions
This measure shows provider recommendation in well visits, counted as vaccines given plus vaccines refused (if documented). The mean dropped from 81% to 67% in August and in April increased to 75% and remains at 75% through December 2019. The pattern and data are almost identical to Measure #1.	Providers are not documenting refusals during well visits using the codes provided or, if documenting, we may need to adjust how VHealth pulls your documented refusals.	Discuss with your team where and how they are documenting refusals for well visits. Review "dummy refusal codes." If needed, submit a technical assistance ticket to VHealth to determine if they are capturing documented refusals.
Weekly Measure #5: HPV Recommend-All		
<i>ALL visits with documented provider recommendation (given or refused) (% of visits with HPV due, ages 11-17)</i>		
What we see	What it could mean	Recommended actions
This measure shows provider recommendation in well and non-well visits, counted as vaccines given plus vaccines refused (if documented). The pattern and data are almost identical to Measure #3.	Providers are not documenting refusals during non-well visits using the codes provided or, if documenting, we may need to adjust how VHealth pulls your documented refusals. The shifts are the same as in Measure #3.	Discuss with your team where and how they are documenting refusals for well and non-well visits. Review "dummy refusal codes." If needed, submit a technical assistance ticket to VHealth to determine if they are capturing documented refusals.
Weekly Measure #6: Bundle Adol Vax		
<i>Visits for ages 11-12 year-olds in which HPV & meningococcal vaccines are bundled with Tdap, when due (% of visits, ages 11-12)</i>		
What we see	What it could mean	Recommended actions
The mean (average) of 87% remains the same through December 2019.	Implementation of vaccine communication strategies, bundling, and patient education materials have resulted in a sustained improvement.	Review the data with providers and acknowledge the sustained improvement. Discuss obstacles to bundling for all 11-12 year old visits and identify ways to minimize or eliminate them. Continue to monitor over time.

Summary Measure: 1+ Dose (Initiation)

Note: US and TN data were updated for 2018

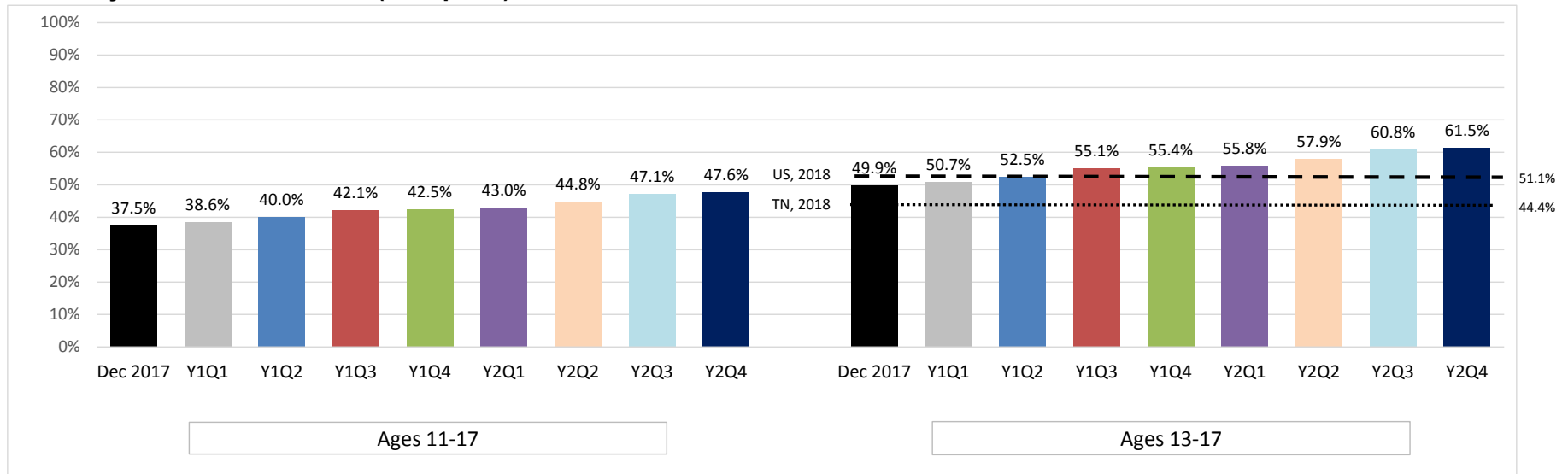


Notes: Rates are for males and females combined.
Practice rates calculated on all active patients (at least one visit in past three years), ages 11-17 or ages 13-17, as indicated.

	Baseline			First MOC Project						Second MOC Project						Maintenance Period											
	Dec 2017			Y1Q1			Y1Q2			Y1Q3			Y1Q4			Y2Q1			Y2Q2			Y2Q3			Y2Q4		
	#	Total	%	#	Total	%	#	Total	%	#	Total	%	#	Total	%	#	Total	%	#	Total	%	#	Total	%	#	Total	%
Ages 11-17	4521	7404	61%	4657	7462	62%	4940	7496	66%	5296	7531	70%	5413	7589	71%	5436	7660	71%	5539	7728	72%	5727	7832	73%	5753	7884	73%
Ages 13-17	3532	5040	70%	3649	5091	72%	3802	5128	74%	3999	5153	78%	4105	5230	78%	4173	5300	79%	4267	5349	80%	4382	5436	81%	4461	5515	81%

Summary Measure: All Doses (Complete)

Note: US and TN data were updated for 2018

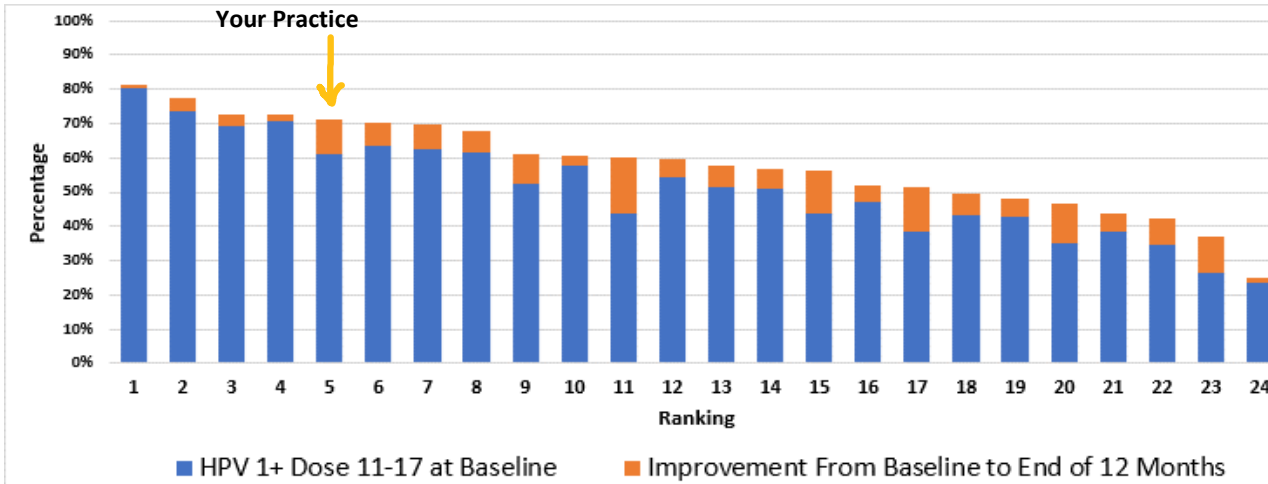


Notes: Rates are for males and females combined.
Practice rates calculated on all active patients (at least one visit in past three years), ages 11-17 or ages 13-17, as indicated.

	Baseline			First MOC Project						Second MOC Project						Maintenance Period											
	Dec 2017			Y1Q1			Y1Q2			Y1Q3			Y1Q4			Y2Q1			Y2Q2			Y2Q3			Y2Q4		
	#	Total	%	#	Total	%	#	Total	%	#	Total	%	#	Total	%	#	Total	%	#	Total	%	#	Total	%	#	Total	%
Ages 11-17	2773	7404	37%	2877	7462	39%	3000	7496	40%	3172	7531	42%	3224	7589	42%	3294	7660	43%	3461	7728	45%	3688	7832	47%	3752	7884	48%
Ages 13-17	2513	5040	50%	2582	5091	51%	2690	5128	52%	2838	5153	55%	2899	5230	55%	2960	5300	56%	3098	5349	58%	3306	5436	61%	3389	5515	61%

Measure: HPV 1+ Dose 11-17 yo

Description: Ranking of HPV vaccine initiation of all active patients ages 11-17 (%) among study sites



Your practice ranked **5th** in **initiating** the HPV vaccine series among patients ages 11-17.

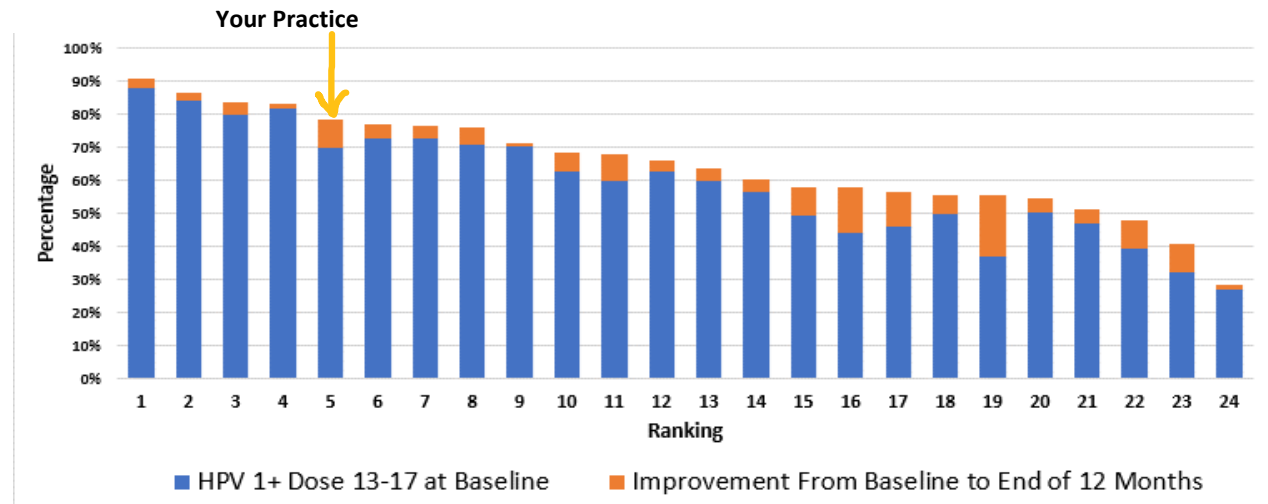
Baseline: 61.1% (Dec 2017).

End of 12 months: 71.3% (Dec 2018).

Improvement: 10.2 percentage point increase in 12 months.

Measure: HPV 1+ Dose 13-17 yo

Description: Ranking of HPV vaccine initiation of all active patients ages 13-17 (%) among study sites



Your practice ranked **5th** in **initiating** the HPV vaccine series among patients ages 13-17.

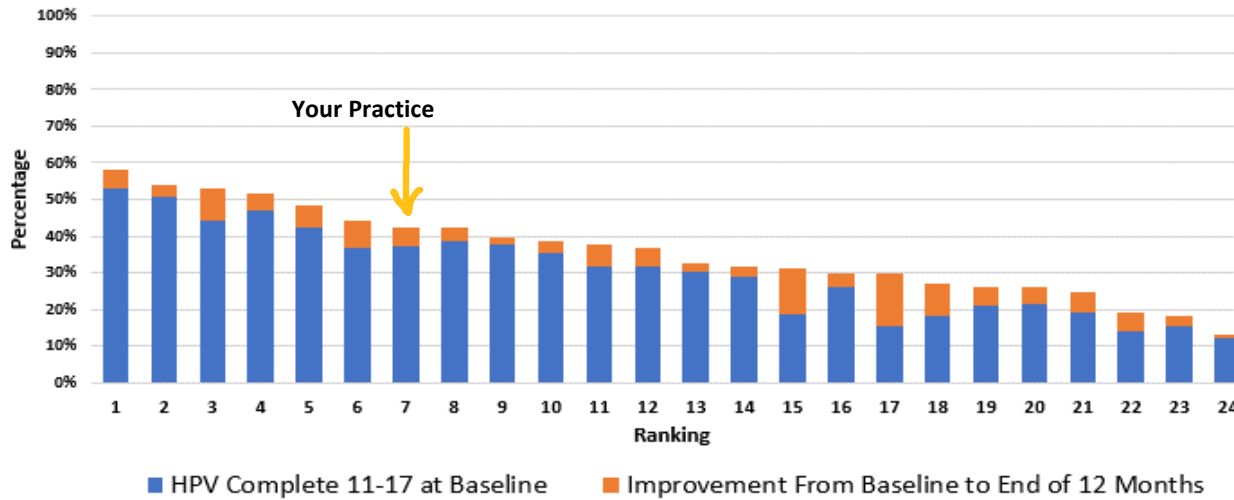
Baseline: 70.1% (Dec 2017).

End of 12 months: 78.5% (Dec 2018).

Improvement: 8.4 percentage point increase in 12 months.

Measure: HPV Complete 11-17 yo

Description: Ranking of HPV vaccine completion of all active patients ages 11-17 (%) among study sites



Your practice ranked **7th** in **completing** the HPV vaccine series among patients ages 11-17.

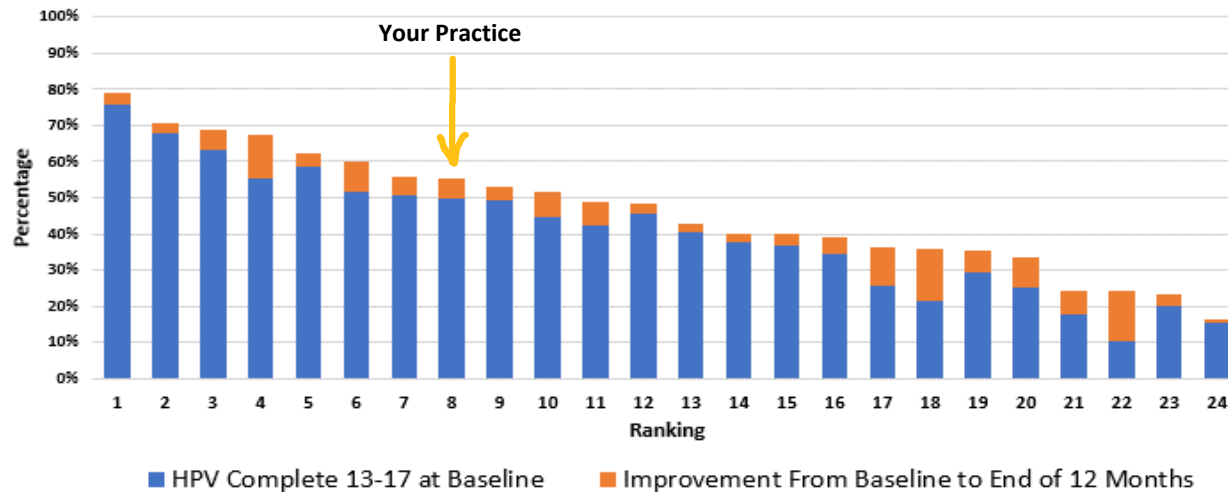
Baseline: 37.5% (Dec 2017).

End of 12 months: 42.5% (Dec 2018).

Improvement: 5.0 percentage point increase in 12 months.

Measure: HPV Complete 13-17 yo

Description: Ranking of HPV vaccine completion of all active patients ages 13-17 (%) among study sites



Your practice ranked **8th** in **completing** the HPV vaccine series among patients ages 13-17.

Baseline: 49.9% (Dec 2017).

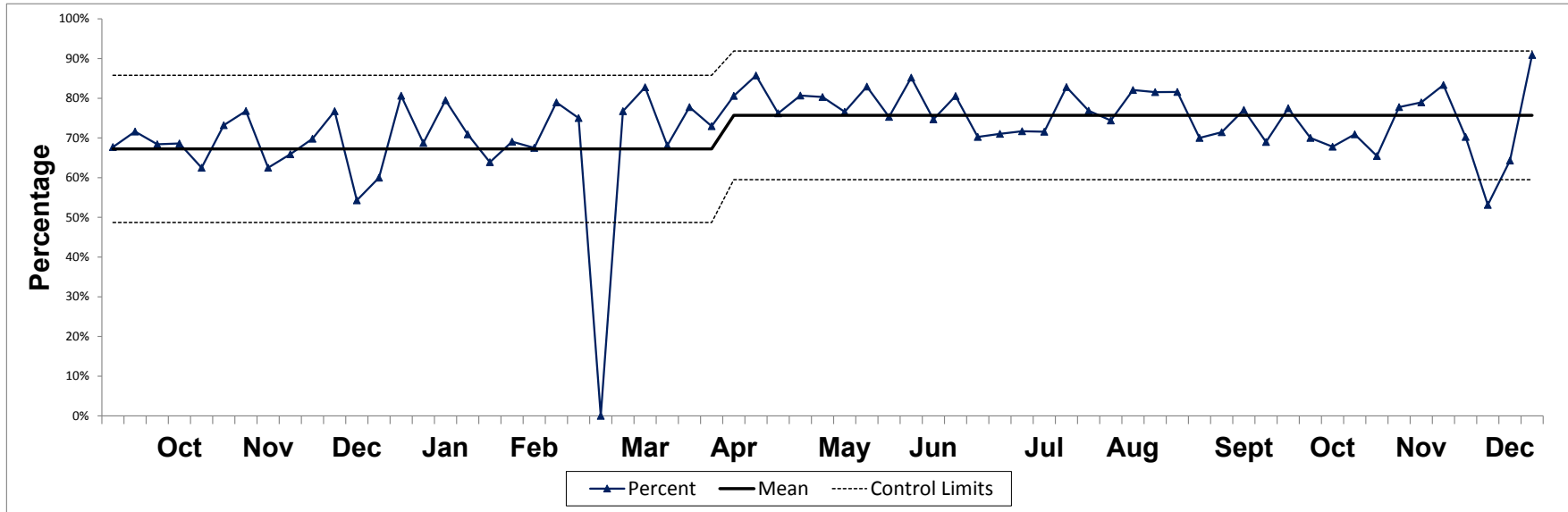
End of 12 months: 55.4% (Dec 2018).

Improvement: 5.5 percentage point increase in 12 months.

Weekly Measure #: 1

Name: HPV Dose Due (Well)

Description: WELL visits with patients up-to-date for HPV vaccine (% of visits with HPV due, ages 11-17)



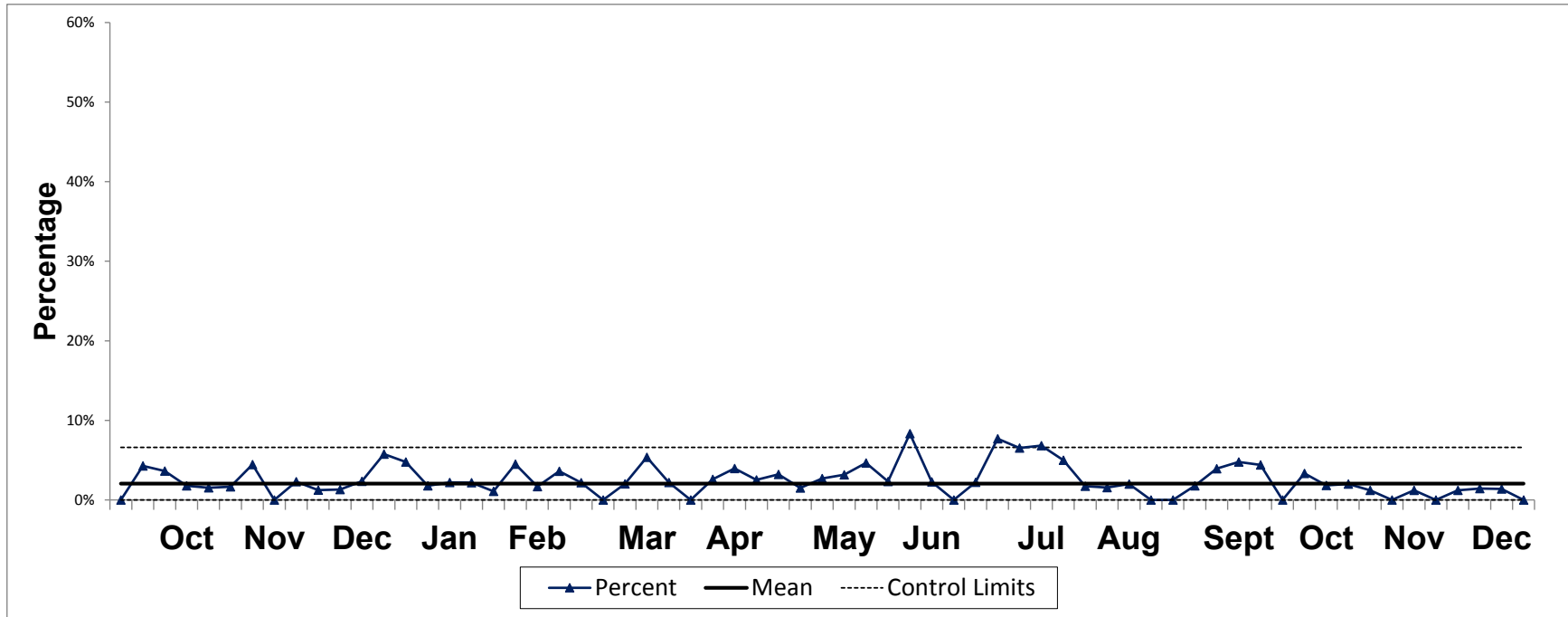
	Jan				Feb				Mar					Apr				May					Jun				
2017	Week 1	2	3	4	5	6	7	8	9	10	11	12	13	14	15	16	17	18	19	20	21	22	23	24	25	26	27
	Complete	20	18	25	18	35	37	27	30	21	25	25	23	27	29	27	23	30	24	22	23	46	44	59	59	55	59
	Total	30	37	55	41	46	52	47	50	27	27	43	37	36	44	42	46	44	37	43	44	65	69	103	84	81	90
	Percent	67%	49%	45%	44%	76%	71%	57%	60%	78%	93%	58%	62%	75%	66%	64%	50%	68%	65%	51%	52%	71%	64%	57%	70%	68%	66%
2018	Complete	27	28	31	28	19	44	35	40	42	42	37	13	60	53	30	30	42	37	44	38	65	66	85	68	46	45
	Total	45	51	45	45	36	51	44	49	49	45	47	27	79	59	37	34	51	44	52	46	85	75	103	86	66	59
	Percent	60%	55%	69%	62%	53%	86%	80%	82%	86%	93%	79%	48%	76%	90%	81%	88%	82%	84%	85%	83%	76%	88%	83%	79%	70%	76%
2019	Complete	25	33	31	39	23	29	27	30	33	0	33	24	32	35	27	54	36	32	46	53	49	68	58	69	59	58
	Total	31	48	39	55	36	42	40	38	44	0	43	29	47	45	37	67	42	42	57	66	64	82	77	81	79	72
	Percent	81%	69%	79%	71%	64%	69%	68%	79%	75%	0%	77%	83%	68%	78%	73%	81%	86%	76%	81%	80%	77%	83%	75%	85%	75%	81%

	Jul			Aug			Sep			Oct				Nov			Dec										
2017	Week 27	28	29	30	31	32	33	34	35	36	37	38	39	40	41	42	43	44	45	46	47	48	49	50	51	52	29
	Complete	60	64	88	82	88	83	53	38	29	33	26	28	21	43	37	28	38	36	25	30	21	24	31	23	34	29
	Total	88	102	126	135	141	130	84	64	61	60	55	60	38	67	63	58	67	63	62	62	42	52	52	46	61	46
	Percent	68%	63%	70%	61%	62%	64%	63%	59%	48%	55%	47%	47%	55%	64%	59%	48%	57%	57%	40%	48%	50%	46%	60%	50%	56%	63%
2018	Complete	38	73	96	95	86	96	58	49	56	29	49	53	39	44	58	39	35	40	41	43	35	29	37	33	19	9
	Total	61	90	114	130	124	120	75	72	83	43	77	81	64	65	81	57	51	64	56	56	56	44	53	43	35	15
	Percent	62%	81%	84%	73%	69%	80%	77%	68%	67%	67%	64%	65%	61%	68%	72%	68%	69%	63%	73%	77%	63%	66%	70%	77%	54%	60%

Weekly Measure #: 2

Name: HPV Dose (Non-Well)

Description: NON-WELL clinic visits with patients up-to-date for HPV vaccine (% of visits with HPV due, ages 11-17)



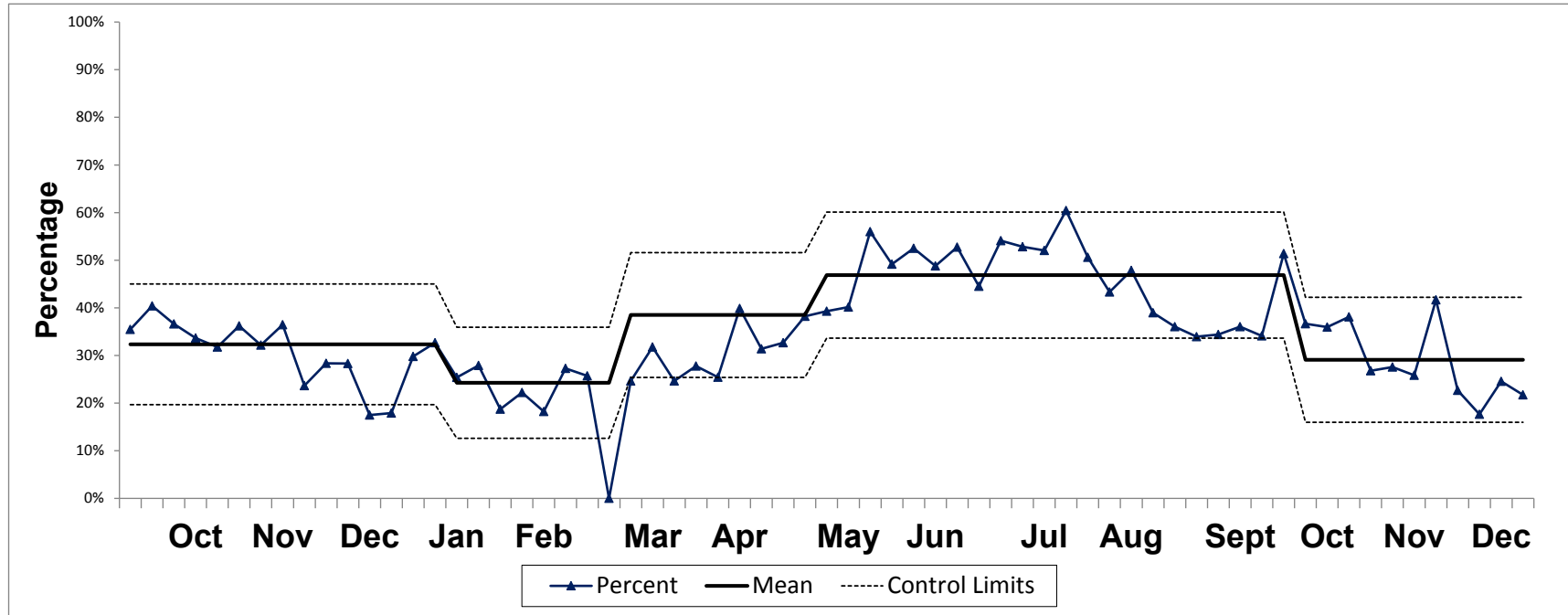
		Jan				Feb				Mar				Apr				May				Jun					
Week		1	2	3	4	5	6	7	8	9	10	11	12	13	14	15	16	17	18	19	20	21	22	23	24	25	26
2017	Complete	2	0	7	2	1	4	3	1	3	3	3	1	2	2	1	2	3	2	1	1	0	1	3	2	4	1
	Total	58	108	120	125	118	139	149	143	122	114	108	72	92	111	96	112	97	107	82	113	78	54	57	70	65	59
	Percent	3%	0%	6%	2%	1%	3%	2%	1%	2%	3%	3%	1%	2%	2%	1%	2%	3%	2%	1%	1%	0%	2%	5%	3%	6%	2%
2018	Complete	3	1	2	2	2	3	1	2	6	1	2	2	1	3	1	5	1	2	3	0	2	1	1	0	0	3
	Total	76	96	64	109	150	153	208	127	108	116	115	76	85	65	93	63	85	84	79	60	53	43	59	60	44	42
	Percent	4%	1%	3%	2%	1%	2%	0%	2%	6%	1%	2%	3%	1%	5%	1%	8%	1%	2%	4%	0%	4%	2%	2%	0%	0%	7%
2019	Complete	3	1	2	2	1	5	2	3	2	0	2	3	2	0	2	3	2	2	1	2	2	2	1	5	1	0
	Total	63	56	91	92	92	111	119	83	92	0	99	56	91	81	77	76	79	62	66	74	63	43	43	60	44	38
	Percent	5%	2%	2%	2%	1%	5%	2%	4%	2%	0%	2%	5%	2%	0%	3%	4%	3%	3%	2%	3%	3%	5%	2%	8%	2%	0%

		Jul				Aug				Sep				Oct				Nov				Dec					
Week		27	28	29	30	31	32	33	34	35	36	37	38	39	40	41	42	43	44	45	46	47	48	49	50	51	52
2017	Complete	1	1	2	1	2	2	5	0	1	0	1	1	3	1	4	1	1	2	2	2	0	0	1	1	2	1
	Total	59	59	53	57	55	57	82	82	93	65	97	86	99	87	60	81	71	78	91	101	52	93	94	88	88	40
	Percent	2%	2%	4%	2%	4%	4%	6%	0%	1%	0%	1%	1%	3%	1%	7%	1%	1%	3%	2%	2%	0%	0%	1%	1%	2%	3%
2018	Complete	2	1	3	3	1	1	3	2	2	2	0	0	0	0	3	2	1	1	4	0	2	1	1	1	2	3
	Total	40	49	64	66	44	61	47	67	74	66	57	57	49	59	70	55	56	65	60	90	40	87	81	77	85	52
	Percent	5%	2%	5%	5%	2%	2%	6%	3%	3%	3%	0%	0%	0%	0%	4%	4%	2%	2%	2%	4%	0%	2%	1%	1%	2%	6%

Weekly Measure #: 3

Name: HPV Dose Due (All)

Description: ALL visits with patients up-to-date for HPV vaccine (% of visits with HPV due, ages 11-17)



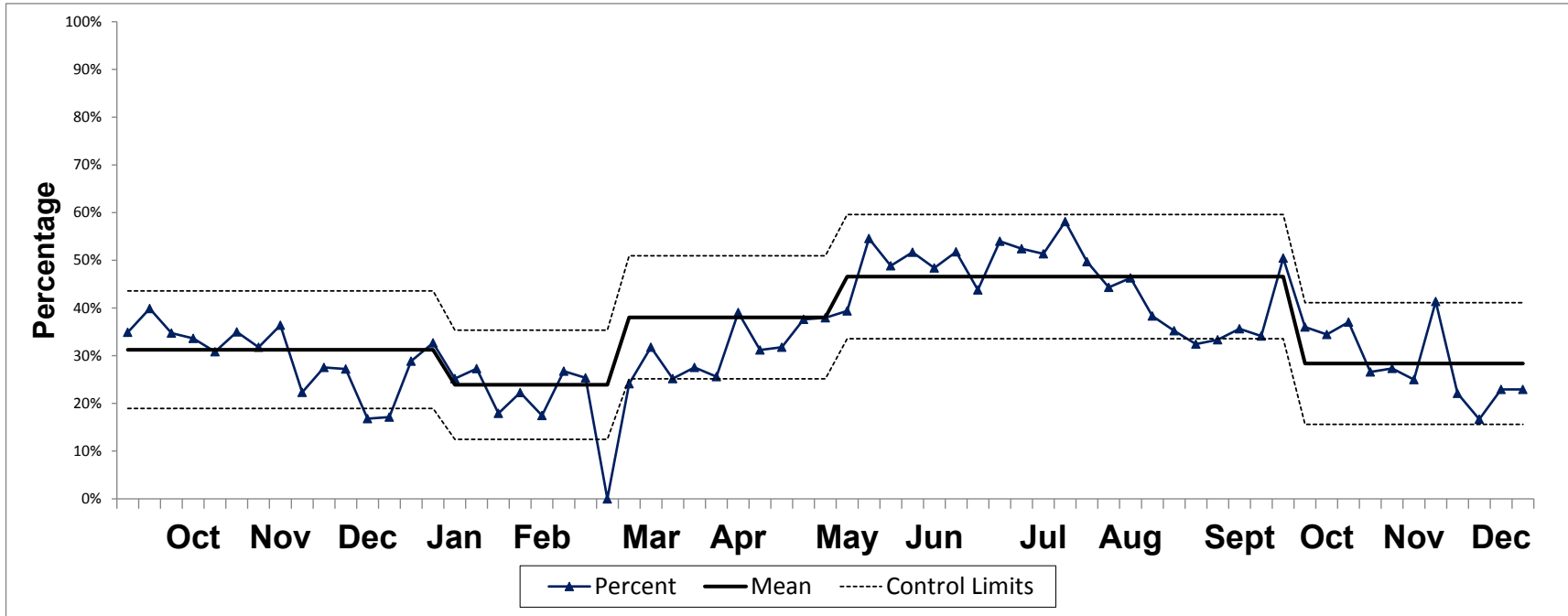
	Jan				Feb				Mar				Apr				May				Jun						
2017	Week 1	2	3	4	5	6	7	8	9	10	11	12	13	14	15	16	17	18	19	20	21	22	23	24	25	26	
	Complete	22	18	32	20	36	41	30	31	24	28	24	29	31	28	25	33	26	23	24	46	45	62	61	59	60	
	Total	88	145	175	166	164	191	196	193	149	141	151	109	128	155	138	158	141	144	125	157	143	123	160	154	146	149
	Percent	25%	12%	18%	12%	22%	21%	15%	16%	16%	20%	19%	22%	23%	20%	16%	23%	18%	18%	15%	32%	37%	39%	40%	40%	40%	
2018	Complete	30	29	33	30	21	47	36	42	48	43	39	15	61	56	31	35	43	39	47	38	67	67	86	68	46	48
	Total	121	147	109	154	186	204	252	176	157	161	162	103	164	124	130	97	136	128	131	106	138	118	162	146	110	101
	Percent	25%	20%	30%	19%	11%	23%	14%	24%	31%	27%	24%	15%	37%	45%	24%	36%	32%	30%	36%	36%	49%	57%	53%	47%	42%	48%
2019	Complete	28	34	33	41	24	34	29	33	35	0	35	27	34	35	29	57	38	34	47	55	51	70	59	74	60	58
	Total	94	104	130	147	128	153	159	121	136	0	142	85	138	126	114	143	121	104	123	140	127	125	120	141	123	110
	Percent	30%	33%	25%	28%	19%	22%	18%	27%	26%	0%	25%	32%	25%	28%	25%	40%	31%	33%	38%	39%	40%	56%	49%	52%	49%	53%

	Jul	Aug	Sep	Oct	Nov	Dec																					
2017	Week 27	28	29	30	31	32	33	34	35	36	37	38	39	40	41	42	43	44	45	46	47	48	49	50	51	52	
	Complete	61	65	90	83	90	85	58	38	30	33	27	29	24	44	41	29	39	38	27	32	21	24	32	24	36	30
	Total	147	161	179	192	196	187	166	146	154	125	152	146	137	154	123	139	138	141	153	163	94	145	146	134	149	86
	Percent	41%	40%	50%	43%	46%	45%	35%	26%	19%	26%	18%	20%	18%	29%	33%	21%	28%	27%	18%	20%	22%	17%	22%	18%	24%	35%
2018	Complete	40	74	99	98	87	97	61	51	58	31	49	53	39	44	61	41	36	41	42	47	35	31	38	34	21	12
	Total	101	139	178	196	168	181	122	139	157	109	134	138	113	124	151	112	107	129	116	146	96	131	134	120	120	67
	Percent	40%	53%	56%	50%	52%	54%	50%	37%	37%	28%	37%	38%	35%	35%	40%	37%	34%	32%	36%	32%	36%	24%	28%	28%	18%	18%

Weekly Measure #: 5

Name: HPV Recommend-All

Description: ALL visits with documented provider recommendation (given or refused) (% of visits with HPV due, ages 11-17)



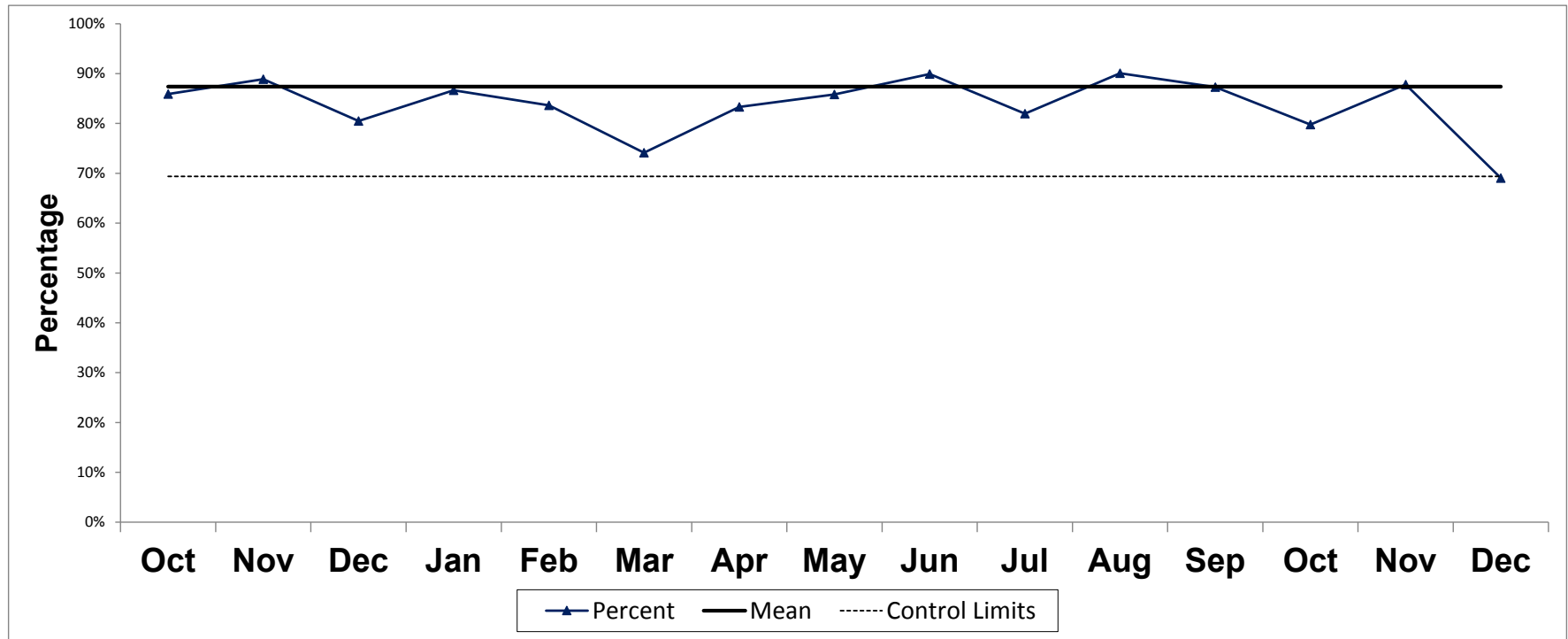
	Jan				Feb				Mar					Apr				May					Jun				
Week	1	2	3	4	5	6	7	8	9	10	11	12	13	14	15	16	17	18	19	20	21	22	23	24	25	26	
2017	Complete	22	18	32	20	36	41	30	31	24	28	28	24	29	31	28	25	33	26	23	24	46	45	62	61	59	60
	Total	88	145	175	166	164	191	197	193	150	141	151	109	128	159	140	161	144	146	127	158	146	124	162	154	148	150
	Percent	25%	12%	18%	12%	22%	21%	15%	16%	16%	20%	19%	22%	23%	19%	20%	16%	23%	18%	18%	15%	32%	36%	38%	40%	40%	40%
2018	Complete	30	29	33	30	21	47	36	42	48	43	39	15	62	56	31	35	43	39	47	38	67	67	86	68	46	48
	Total	124	148	111	157	188	204	254	177	159	165	163	104	168	127	133	99	140	129	134	109	139	120	164	148	113	105
	Percent	24%	20%	30%	19%	11%	23%	14%	24%	30%	26%	24%	14%	37%	44%	23%	35%	31%	30%	35%	35%	48%	56%	52%	46%	41%	46%
2019	Complete	28	34	33	42	24	35	29	34	35	0	35	27	35	35	31	57	39	34	47	55	52	72	63	76	61	59
	Total	97	104	131	154	134	157	166	127	138	0	145	85	139	127	121	146	125	107	125	145	132	132	129	147	126	114
	Percent	29%	33%	25%	27%	18%	22%	17%	27%	25%	0%	24%	32%	25%	28%	26%	39%	31%	32%	38%	38%	39%	55%	49%	52%	48%	52%

	Jul				Aug				Sep					Oct				Nov					Dec				
Week	27	28	29	30	31	32	33	34	35	36	37	38	39	40	41	42	43	44	45	46	47	48	49	50	51	52	
2017	Complete	61	65	90	83	90	86	58	38	30	33	27	29	24	44	41	29	39	38	27	32	21	25	32	24	36	30
	Total	153	165	181	196	200	191	171	151	157	128	156	149	138	158	124	141	142	144	162	166	95	152	152	136	154	86
	Percent	40%	39%	50%	42%	45%	45%	34%	25%	19%	26%	17%	19%	17%	28%	33%	21%	27%	26%	17%	19%	22%	16%	21%	18%	23%	35%
2018	Complete	40	74	99	98	87	97	61	51	58	32	49	53	40	44	61	41	37	41	42	47	36	31	38	34	21	12
	Total	103	148	178	199	172	187	123	144	165	117	144	144	120	126	153	118	110	133	120	148	99	139	138	125	125	70
	Percent	39%	50%	56%	49%	51%	52%	50%	35%	35%	27%	34%	37%	33%	35%	40%	35%	34%	31%	35%	32%	36%	22%	28%	27%	17%	17%

Weekly Measure #: 6

Name: Bundle Adol Vax

Description: Visits for ages 11-12 year-olds in which HPV & meningococcal vaccines are bundled with Tdap, when due (% of visits, ages 11-12)



		Jan	Feb	Mar	Apr	May	Jun	Jul	Aug	Sep	Oct	Nov	Dec
2017	Complete	20	40	38	28	36	50	69	71	34	36	42	20
	Total	38	54	47	52	61	74	100	112	60	71	82	39
	Percent	53%	74%	81%	54%	59%	68%	69%	63%	57%	51%	51%	51%
2018	Complete	22	44	57	41	84	65	74	86	48	61	64	33
	Total	40	53	65	46	89	70	86	103	59	71	72	41
	Percent	55%	83%	88%	89%	94%	93%	86%	83%	81%	86%	89%	80%
2019	Complete	39	46	43	60	97	89	109	127	55	71	72	29
	Total	45	55	58	72	113	99	133	141	63	89	82	42
	Percent	87%	84%	74%	83%	86%	90%	82%	90%	87%	80%	88%	69%