



HPV Vaccine Quality Improvement Study Weekly Run Chart Report

Practice ID:	14		
Baseline Period:	Jan-Dec 2017	Date of Data Pull:	2/7/20
MOC Project Periods:	Jan-Dec 2018	Data through:	2020 Week 3

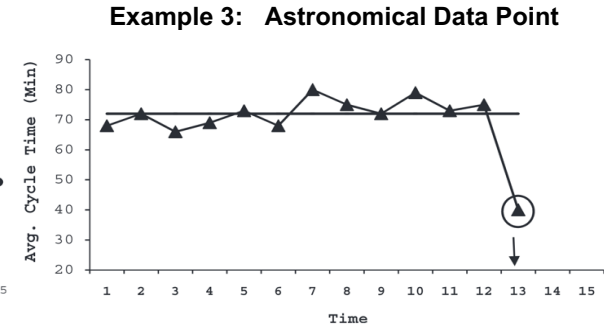
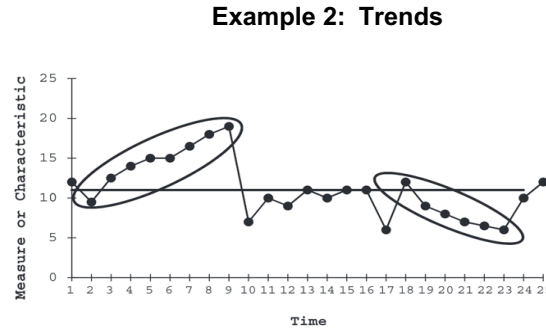
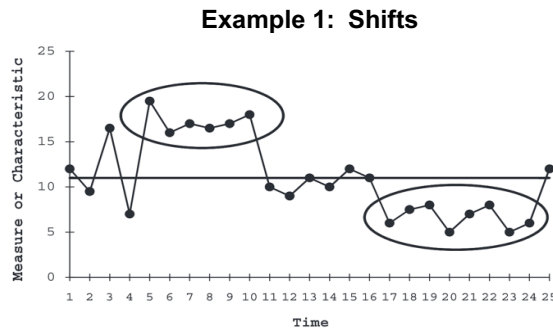
How to Interpret Your Weekly Run Charts

Higher is Better: For all of the measures in this report, the desirable direction is upward (increasing).

Goal: The default goal for each measure is 80%. If your practice would like to change the goal for a specific measure, submit a VHealth technical support ticket.

Look for Patterns in Your Data: It is normal to have random movement of your weekly data up and down around the median during the Baseline Period (gray area). Here are examples of patterns that are not random (see figures*):

- 1) **Shifts:** At least 6 consecutive points that all occur above or below the median line
- 2) **Trends:** At least 5 consecutive points all going in an upward or downward direction regardless of what side of the median line they are on
- 3) **Astronomical Data Point:** An outlier data point that stands out as unusually high or low from the overall average or median value



Baseline Period (gray area): Look for shifts or trends that may represent seasonal patterns (e.g., summer, flu season) or when major changes happened in the practice. You may see similar seasonal patterns in the next year. You can compare data across years in the table under the chart. If you see any astronomical points, think about if there was an unusual event that caused it.

MOC Projects Period (white area): While working on your MOC projects, during the “Study” phase of your PDSA cycles, look for new patterns in your weekly data.

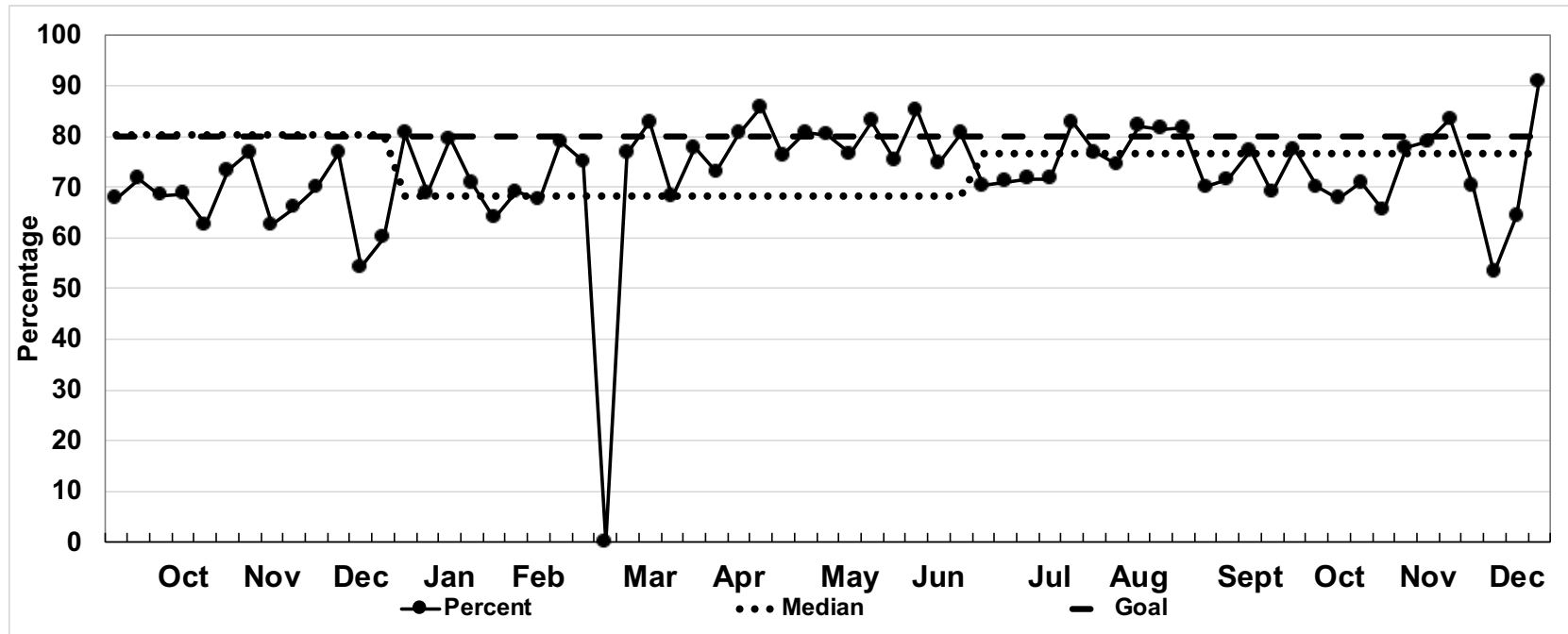
- When you see an upward shift or upward trend, these patterns may mean you are making an improvement. Continue to monitor your data to see if you hold these gains over time.
- If you do not see improvements, or if your data go down, it may be helpful for your team to revisit and adjust your plan then do additional PDSA cycles. Also think about any special circumstance during those weeks that may have interfered with the plan being fully implemented, such as a provider being on vacation or an unusually heavy volume of flu visits.

*Source: Perla RJ, Provost LP, Murray SK. The run chart: A simple analytical tool for learning from variation in healthcare processes. *BMJ Quality and Safety*. 2011; 20:46-51.

Weekly Measure #: 1

Name: HPV Dose Due (Well)

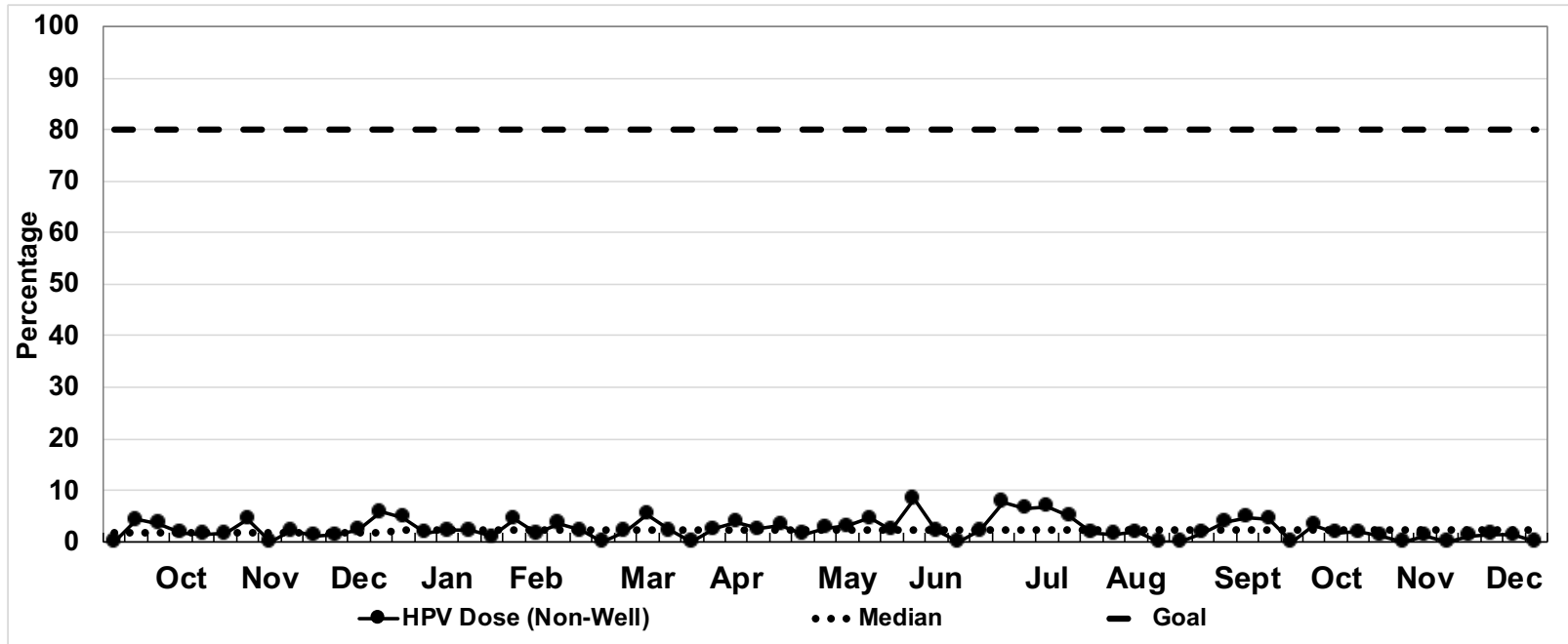
Description: WELL visits with patients up-to-date for HPV vaccine (% of visits with HPV due, ages 11-17)



	Jan	2	3	4	5	6	7	8	9	10	11	12	13	14	15	16	17	18	19	20	21	22	23	24	25	26
2017	20	18	25	18	35	37	27	30	21	25	25	23	27	29	27	23	30	24	22	23	46	44	59	59	55	59
Total	30	37	55	41	46	52	47	50	27	27	43	37	36	44	42	46	44	37	43	44	65	69	103	84	81	90
Percent	67%	49%	45%	44%	76%	71%	57%	60%	78%	93%	58%	62%	75%	66%	64%	50%	68%	65%	51%	52%	71%	64%	57%	70%	68%	66%
2018	27	28	31	28	19	44	35	40	42	42	37	13	60	53	30	30	42	37	44	38	65	66	85	68	46	45
Total	45	51	45	45	36	51	44	49	49	45	47	27	79	59	37	34	51	44	52	46	85	75	103	86	66	59
Percent	60%	55%	69%	62%	53%	86%	80%	82%	86%	93%	79%	48%	76%	90%	81%	88%	82%	84%	85%	83%	76%	88%	83%	79%	70%	76%
2019	25	33	31	39	23	29	27	30	33	0	33	24	32	35	27	54	36	32	46	53	49	68	58	69	59	58
Total	31	48	39	55	36	42	40	38	44	0	43	29	47	45	37	67	42	42	57	66	64	82	77	81	79	72
Percent	81%	69%	79%	71%	64%	69%	68%	79%	75%	0%	77%	83%	68%	78%	73%	81%	86%	76%	81%	80%	77%	83%	75%	85%	75%	81%

	Jul	28	29	30	31	32	33	34	35	36	37	38	39	40	41	42	43	44	45	46	47	48	49	50	51	52
2017	60	64	88	82	88	83	53	38	29	33	26	28	21	43	37	28	38	36	25	30	21	24	31	23	34	29
Total	88	102	126	135	141	130	84	64	61	60	55	60	38	67	63	58	67	63	62	62	42	52	52	46	61	46
Percent	68%	63%	70%	61%	62%	64%	63%	59%	48%	55%	47%	47%	55%	64%	59%	48%	57%	57%	40%	48%	50%	46%	60%	50%	56%	63%
2018	38	73	96	95	86	96	58	49	56	29	49	53	39	44	58	39	35	40	41	43	35	29	37	33	19	9
Total	61	90	114	130	124	120	75	72	83	43	77	81	64	65	81	57	51	64	56	56	56	44	53	43	35	15
Percent	62%	81%	84%	73%	69%	80%	77%	68%	67%	67%	64%	65%	61%	68%	72%	68%	69%	63%	73%	77%	63%	66%	70%	77%	54%	60%
2019	52	76	81	73	82	83	64	55	53	31	35	30	37	40	55	42	40	39	36	35	30	35	26	17	27	10
Total	74	107	113	102	99	108	86	67	65	38	50	42	48	58	71	60	59	55	55	45	38	42	37	32	42	11
Percent	70%	71%	72%	72%	83%	77%	74%	82%	82%	82%	70%	71%	77%	69%	77%	70%	68%	71%	65%	78%	79%	83%	70%	53%	64%	91%

Weekly Measure #: 2
 Name: HPV Dose (Non-Well)
 Description: NON-WELL clinic visits with patients up-to-date for HPV vaccine (% of visits with HPV due, ages 11-17)



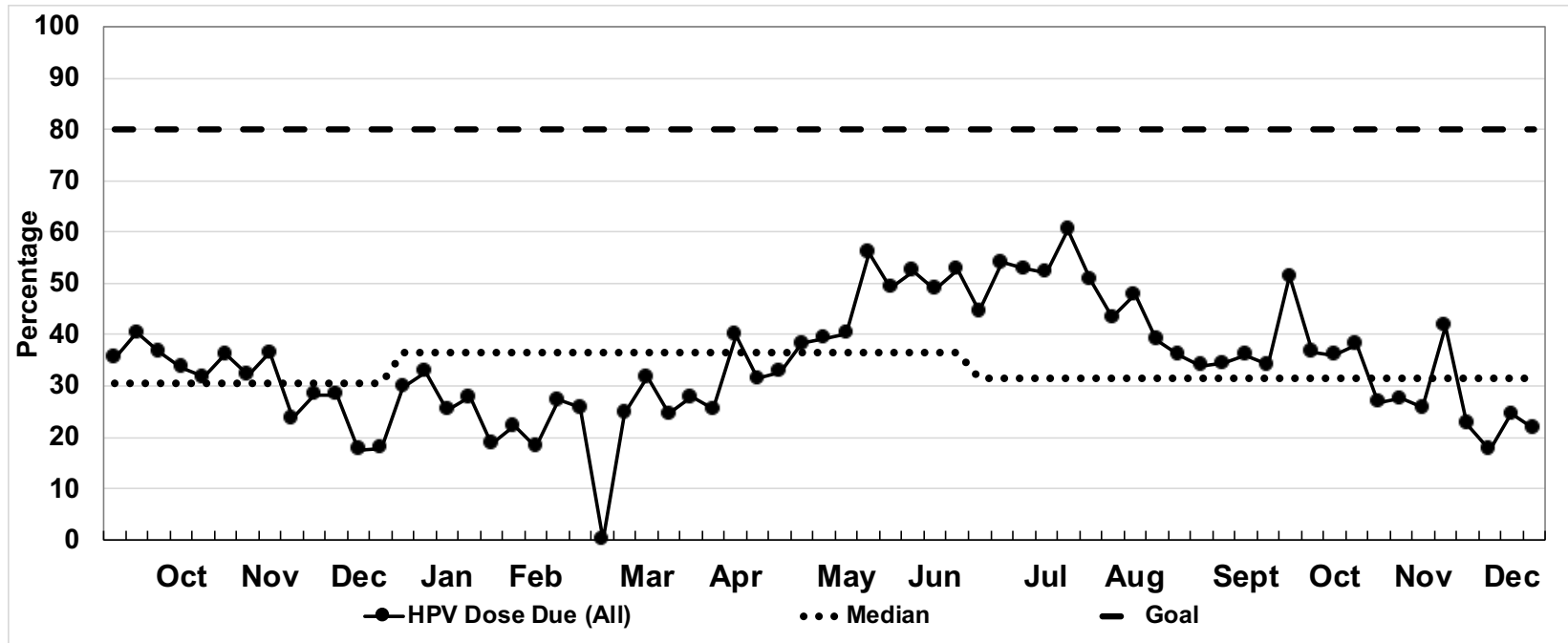
	Jan				Feb				Mar				Apr			May			Jun								
2017	Week	1	2	3	4	5	6	7	8	9	10	11	12	13	14	15	16	17	18	19	20	21	22	23	24	25	26
	Complete	2	0	7	2	1	4	3	1	3	3	3	1	2	2	1	2	3	2	1	1	0	1	3	2	4	1
	Total	58	108	120	125	118	139	149	143	122	114	108	72	92	111	96	112	97	107	82	113	78	54	57	70	65	59
	Percent	3%	0%	6%	2%	1%	3%	2%	1%	2%	3%	3%	1%	2%	2%	1%	2%	3%	2%	1%	1%	0%	2%	5%	3%	6%	2%
2018	Complete	3	1	2	2	2	3	1	2	6	1	2	2	1	3	1	5	1	2	3	0	2	1	1	0	0	3
	Total	76	96	64	109	150	153	208	127	108	116	115	76	85	65	93	63	85	84	79	60	53	43	59	60	44	42
	Percent	4%	1%	3%	2%	1%	2%	0%	2%	6%	1%	2%	3%	1%	5%	1%	8%	1%	2%	4%	0%	4%	2%	2%	0%	0%	7%
2019	Complete	3	1	2	2	1	5	2	3	2	0	2	3	2	0	2	3	2	2	1	2	2	2	1	5	1	0
	Total	63	56	91	92	92	111	119	83	92	0	99	56	91	81	77	76	79	62	66	74	63	43	43	60	44	38
	Percent	5%	2%	2%	2%	1%	5%	2%	4%	2%	0%	2%	5%	2%	0%	3%	4%	3%	3%	2%	3%	3%	5%	2%	8%	2%	0%

	Jul				Aug				Sep				Oct			Nov			Dec								
2017	Week	27	28	29	30	31	32	33	34	35	36	37	38	39	40	41	42	43	44	45	46	47	48	49	50	51	52
	Complete	1	1	2	1	2	2	5	0	1	0	1	1	3	1	4	1	1	2	2	0	0	1	1	1	2	1
	Total	59	59	53	57	55	57	82	82	93	65	97	86	99	87	60	81	71	78	91	101	52	93	94	88	88	40
	Percent	2%	2%	4%	2%	4%	4%	6%	0%	1%	0%	1%	1%	3%	1%	7%	1%	1%	3%	2%	2%	0%	0%	1%	1%	2%	3%
2018	Complete	2	1	3	3	1	1	3	2	2	2	0	0	0	0	3	2	1	1	1	4	0	2	1	1	2	3
	Total	40	49	64	66	44	61	47	67	74	66	57	57	49	59	70	55	56	65	60	90	40	87	81	77	85	52
	Percent	5%	2%	5%	5%	2%	2%	6%	3%	3%	3%	0%	0%	0%	0%	4%	4%	2%	2%	2%	4%	0%	2%	1%	1%	2%	6%
2019	Complete	1	3	3	3	2	1	1	1	0	0	1	2	3	3	0	2	1	1	1	0	1	0	1	1	1	0
	Total	45	39	46	44	40	58	64	50	71	48	56	51	63	68	36	60	55	50	83	82	82	42	82	70	72	35
	Percent	2%	8%	7%	7%	5%	2%	2%	2%	0%	0%	2%	4%	5%	4%	0%	3%	2%	2%	1%	0%	1%	0%	1%	1%	1%	0%

Weekly Measure #: 3

Name: HPV Dose Due (All)

Description: ALL visits with patients up-to-date for HPV vaccine (% of visits with HPV due, ages 11-17)



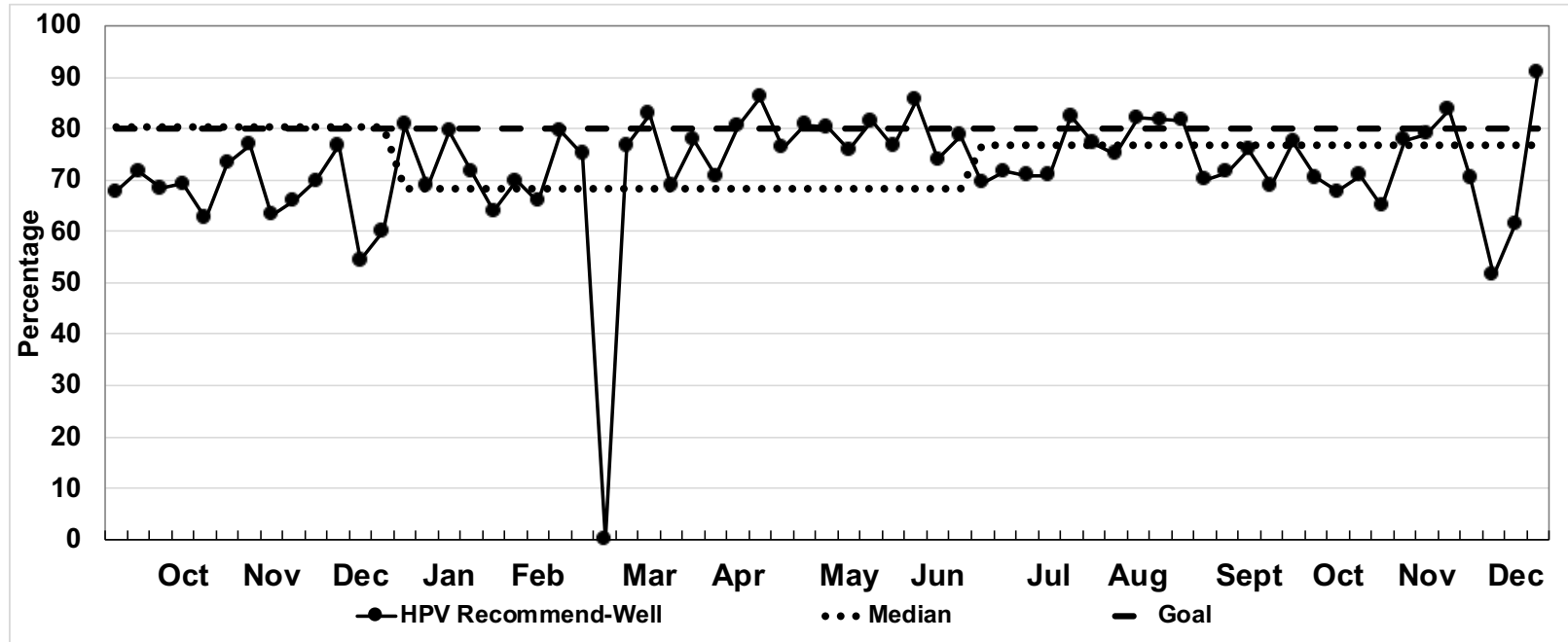
	Week	Jan				Feb				Mar				Apr				May				Jun					
		1	2	3	4	5	6	7	8	9	10	11	12	13	14	15	16	17	18	19	20	21	22	23	24	25	26
2017	Complete	22	18	32	20	36	41	30	31	24	28	28	24	29	31	28	25	33	26	23	24	46	45	62	61	59	60
	Total	88	145	175	166	164	191	196	193	149	141	151	109	128	155	138	158	141	144	125	157	143	123	160	154	146	149
	Percent	25%	12%	18%	12%	22%	21%	15%	16%	16%	20%	19%	22%	23%	20%	20%	16%	23%	18%	18%	15%	32%	37%	39%	40%	40%	40%
2018	Complete	30	29	33	30	21	47	36	42	48	43	39	15	61	56	31	35	43	39	47	38	67	67	86	68	46	48
	Total	121	147	109	154	186	204	252	176	157	161	162	103	164	124	130	97	136	128	131	106	138	118	162	146	110	101
	Percent	25%	20%	30%	19%	11%	23%	14%	24%	31%	27%	24%	15%	37%	45%	24%	36%	32%	30%	36%	36%	49%	57%	53%	47%	42%	48%
2019	Complete	28	34	33	41	24	34	29	33	35	0	35	27	34	35	29	57	38	34	47	55	51	70	59	74	60	58
	Total	94	104	130	147	128	153	159	121	136	0	142	85	138	126	114	143	121	104	123	140	127	125	120	141	123	110
	Percent	30%	33%	25%	28%	19%	22%	18%	27%	26%	0%	25%	32%	25%	28%	25%	40%	31%	33%	38%	39%	40%	56%	49%	52%	49%	53%

	Week	Jul				Aug				Sep				Oct				Nov				Dec					
		27	28	29	30	31	32	33	34	35	36	37	38	39	40	41	42	43	44	45	46	47	48	49	50	51	52
2017	Complete	61	65	90	83	90	85	58	38	30	33	27	29	24	44	41	29	39	38	27	32	21	24	32	24	36	30
	Total	147	161	179	192	196	187	166	146	154	125	152	146	137	154	123	139	138	141	153	163	94	145	146	134	149	86
	Percent	41%	40%	50%	43%	46%	45%	35%	26%	19%	26%	18%	20%	18%	29%	33%	21%	28%	27%	18%	20%	22%	17%	22%	18%	24%	35%
2018	Complete	40	74	99	98	87	97	61	51	58	31	49	53	39	44	61	41	36	41	42	47	35	31	38	34	21	12
	Total	101	139	178	196	168	181	122	139	157	109	134	138	113	124	151	112	107	129	116	146	96	131	134	120	120	67
	Percent	40%	53%	56%	50%	52%	54%	50%	37%	37%	28%	37%	38%	35%	35%	40%	37%	34%	32%	36%	32%	36%	24%	28%	28%	18%	18%
2019	Complete	53	79	84	76	84	84	65	56	53	31	36	32	40	43	55	44	41	40	37	35	31	35	27	18	28	10
	Total	119	146	159	146	139	166	150	117	136	86	106	93	111	126	107	120	114	105	138	127	120	84	119	102	114	46
	Percent	45%	54%	53%	52%	60%	51%	43%	48%	39%	36%	34%	34%	36%	34%	51%	37%	36%	38%	27%	28%	26%	42%	23%	18%	25%	22%

Weekly Measure #: 4

Name: HPV Recommend-Well

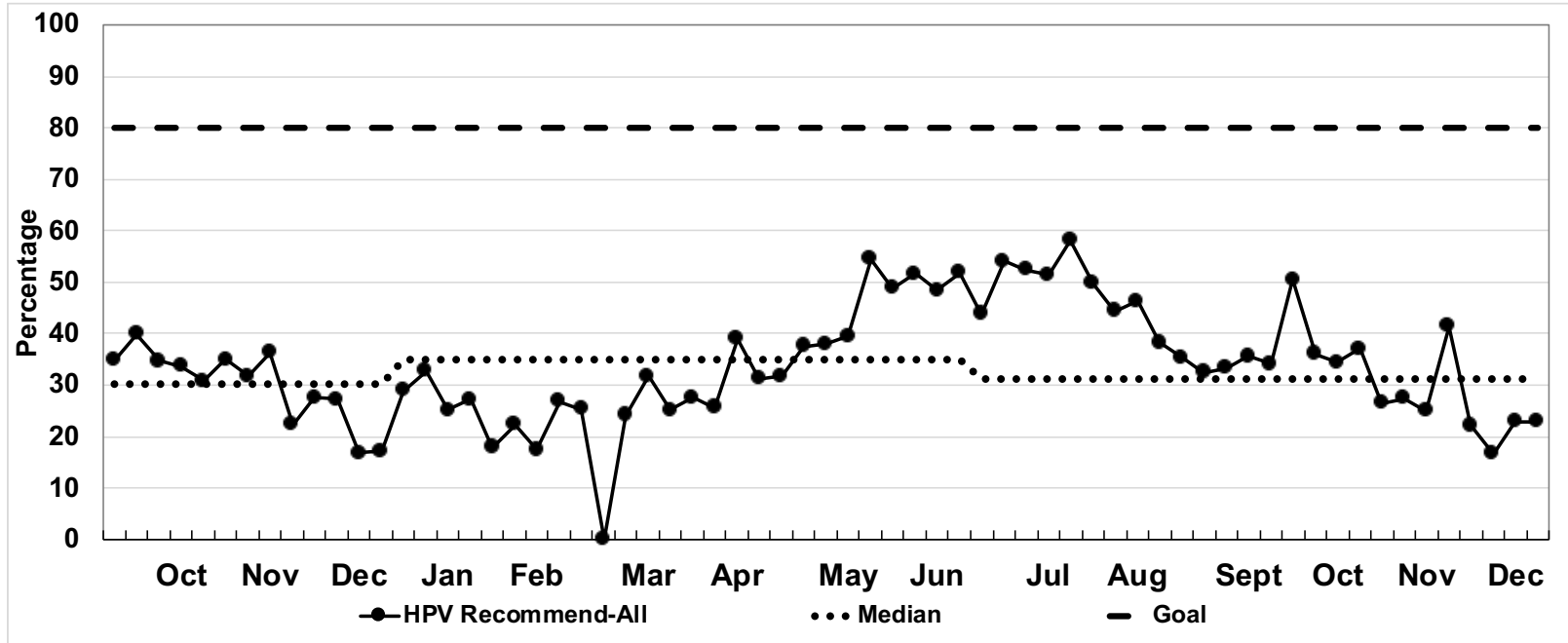
Description: WELL visits with documented provider recommendation (given or refused) (% of visits with HPV due, ages 11-17)



		Jan				Feb				Mar				Apr				May				Jun					
	Week	1	2	3	4	5	6	7	8	9	10	11	12	13	14	15	16	17	18	19	20	21	22	23	24	25	26
2017	Complete	20	18	25	18	35	37	27	30	21	25	25	23	27	29	27	23	30	24	22	23	46	44	59	59	55	59
	Total	30	37	55	41	46	52	47	50	27	27	43	37	36	44	42	46	44	37	43	44	66	69	103	84	81	90
	Percent	67%	49%	45%	44%	76%	71%	57%	60%	78%	93%	58%	62%	75%	66%	64%	50%	68%	65%	51%	52%	70%	64%	57%	70%	68%	66%
2018	Complete	27	28	31	28	19	44	35	40	42	42	37	13	61	53	30	30	42	37	44	38	65	66	85	68	49	53
	Total	45	51	45	45	36	51	44	49	49	45	47	27	80	60	37	34	51	44	52	46	85	75	103	87	72	69
	Percent	60%	55%	69%	62%	53%	86%	80%	82%	86%	93%	79%	48%	76%	88%	81%	88%	82%	84%	85%	83%	76%	88%	83%	78%	68%	77%
2019	Complete	25	33	31	40	23	30	27	31	33	0	33	24	33	35	29	54	37	32	46	53	50	70	62	71	60	59
	Total	31	48	39	56	36	43	41	39	44	0	43	29	48	45	41	67	43	42	57	66	66	86	81	83	81	75
	Percent	81%	69%	79%	71%	64%	70%	66%	79%	75%	0%	77%	83%	69%	78%	71%	81%	86%	76%	81%	80%	76%	81%	77%	86%	74%	79%

		Jul				Aug				Sep				Oct				Nov				Dec					
	Week	27	28	29	30	31	32	33	34	35	36	37	38	39	40	41	42	43	44	45	46	47	48	49	50	51	52
2017	Complete	60	64	88	82	88	84	53	38	29	33	26	28	21	43	37	28	38	36	25	30	21	24	48	31	23	34
	Total	88	102	126	135	141	131	84	65	61	60	55	61	38	67	63	58	67	63	62	62	42	52	52	46	62	46
	Percent	68%	63%	70%	61%	62%	64%	63%	58%	48%	55%	47%	46%	55%	64%	59%	48%	57%	57%	40%	48%	50%	46%	60%	50%	55%	63%
2018	Complete	39	73	96	95	86	96	58	49	56	30	49	53	40	44	58	39	36	40	41	43	36	29	37	33	19	9
	Total	63	90	114	130	124	122	75	72	83	44	77	81	65	65	81	57	52	64	56	56	57	44	53	43	35	15
	Percent	62%	81%	84%	73%	69%	79%	77%	68%	67%	68%	64%	65%	62%	68%	72%	68%	69%	63%	73%	77%	63%	66%	70%	77%	54%	60%
2019	Complete	52	78	83	73	84	84	69	55	54	31	35	30	38	40	55	43	40	39	37	35	30	36	26	17	27	10
	Total	75	109	117	103	102	109	92	67	66	38	50	42	50	58	71	61	59	55	57	45	38	43	37	33	44	11
	Percent	69%	72%	71%	71%	82%	77%	75%	82%	82%	82%	70%	71%	76%	69%	77%	70%	68%	71%	65%	78%	79%	84%	70%	52%	61%	91%

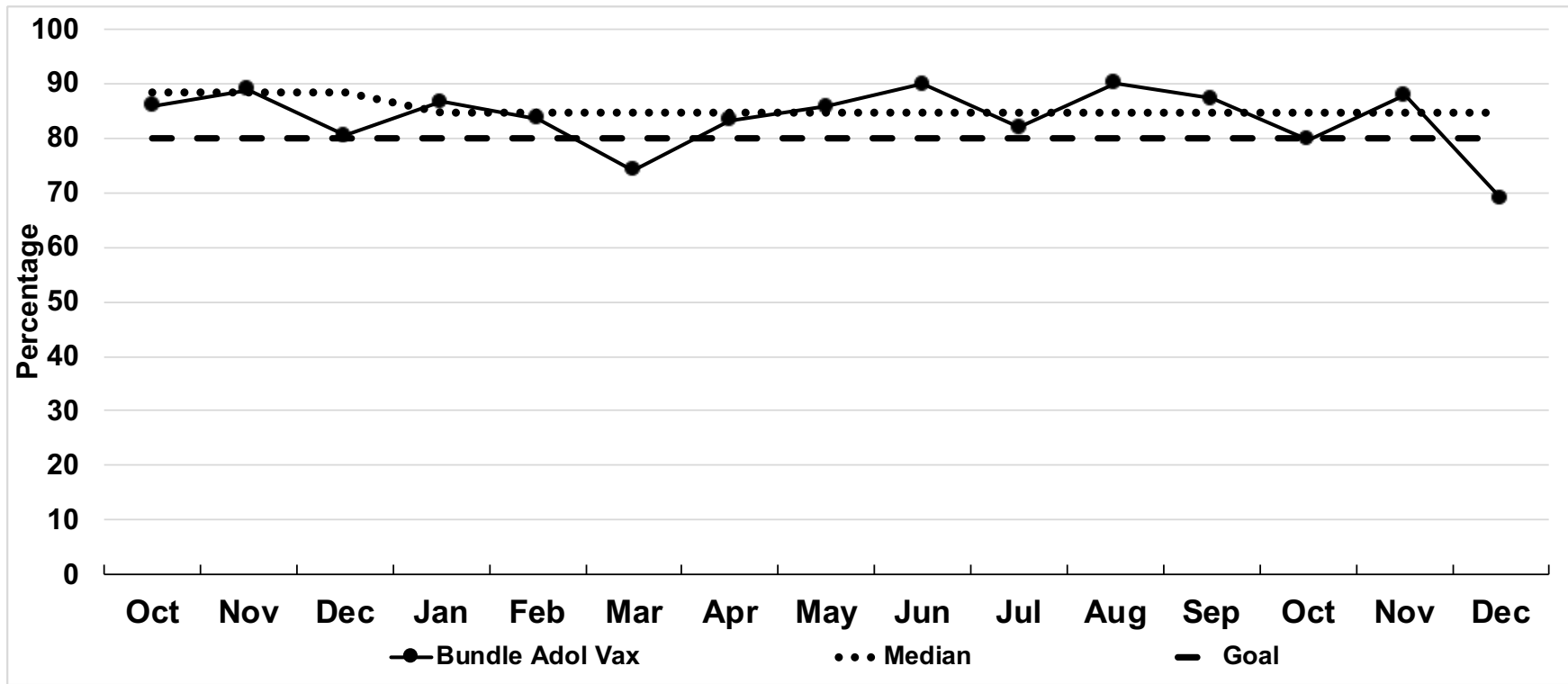
Weekly Measure #: 5
 Name: HPV Recommend-All
 Description: ALL visits with documented provider recommendation (given or refused) (% of visits with HPV due, ages 11-17)



		Jan				Feb				Mar				Apr				May				Jun					
Week		1	2	3	4	5	6	7	8	9	10	11	12	13	14	15	16	17	18	19	20	21	22	23	24	25	26
2017	Complete	22	18	32	20	36	41	30	31	24	28	28	24	29	31	28	25	33	26	23	24	46	25	62	61	59	60
	Total	88	145	175	166	164	191	197	193	150	141	151	109	128	159	140	161	144	146	127	158	146	124	162	154	148	150
	Percent	25%	12%	18%	12%	22%	21%	15%	16%	16%	20%	19%	22%	23%	19%	20%	16%	23%	18%	18%	15%	32%	36%	38%	40%	40%	40%
2018	Complete	30	29	33	30	21	47	36	42	48	43	39	15	62	56	31	35	43	39	47	38	67	67	86	68	46	48
	Total	124	148	111	157	188	204	254	177	159	165	163	104	168	127	133	99	140	129	134	109	139	120	164	148	113	105
	Percent	24%	20%	30%	19%	11%	23%	14%	24%	30%	26%	24%	14%	37%	44%	23%	35%	31%	30%	35%	35%	48%	56%	52%	46%	41%	46%
2019	Complete	28	34	33	42	24	35	29	34	35	0	35	27	35	35	31	57	39	34	47	55	52	72	63	76	61	59
	Total	97	104	131	154	134	157	166	127	138	0	145	85	139	127	121	146	125	107	125	145	132	132	129	147	126	114
	Percent	29%	33%	25%	27%	18%	22%	17%	27%	25%	0%	24%	32%	25%	28%	26%	39%	31%	32%	38%	38%	39%	55%	49%	52%	48%	52%

		Jul				Aug				Sep				Oct				Nov				Dec					
Week		27	28	29	30	31	32	33	34	35	36	37	38	39	40	41	42	43	44	45	46	47	48	49	50	51	52
2017	Complete	61	65	90	83	90	86	58	38	30	33	27	29	24	44	44	29	39	38	27	25	25	32	24	36	30	
	Total	153	165	181	196	200	191	171	151	157	128	156	149	138	158	124	141	142	144	162	166	95	152	152	136	154	
	Percent	40%	39%	50%	42%	45%	45%	34%	25%	19%	26%	17%	19%	17%	28%	33%	21%	27%	26%	17%	19%	22%	16%	21%	18%	23%	
2018	Complete	40	74	99	98	87	97	61	51	58	32	49	53	40	44	61	41	37	41	42	47	36	31	38	34	12	
	Total	103	148	178	199	172	187	123	144	165	117	144	144	120	126	153	118	110	133	120	148	99	139	138	125	70	
	Percent	39%	50%	56%	49%	51%	52%	50%	35%	35%	27%	34%	37%	33%	35%	40%	35%	34%	31%	35%	32%	36%	22%	28%	27%	17%	
2019	Complete	53	81	86	76	86	85	70	56	54	31	36	32	41	43	55	45	41	40	38	35	31	36	27	18	11	
	Total	121	150	164	148	148	171	158	121	141	88	111	96	115	126	109	125	119	108	143	128	124	87	122	108	48	
	Percent	44%	54%	52%	51%	58%	50%	44%	46%	38%	35%	32%	33%	36%	34%	50%	36%	34%	37%	27%	27%	25%	41%	22%	17%	23%	

Weekly Measure #: 6
 Name: Bundle Adol Vax
 Description: Visits for ages 11-12 year-olds in which HPV & meningococcal vaccines are bundled with Tdap, when due (% of visits, ages 11-12)



		Jan	Feb	Mar	Apr	May	Jun	Jul	Aug	Sep	Oct	Nov	Dec
2017	Complete	20	40	38	28	36	50	69	71	34	36	42	20
	Total	38	54	47	52	61	74	100	112	60	71	82	39
	Percent	53%	74%	81%	54%	59%	68%	69%	63%	57%	51%	51%	51%
2018	Complete	22	44	57	41	84	65	74	86	48	61	64	33
	Total	40	53	65	46	89	70	86	103	59	71	72	41
	Percent	55%	83%	88%	89%	94%	93%	86%	83%	81%	86%	89%	80%
2019	Complete	39	46	43	60	97	89	109	127	55	71	72	29
	Total	45	55	58	72	113	99	133	141	63	89	82	42
	Percent	87%	84%	74%	83%	86%	90%	82%	90%	87%	80%	88%	69%